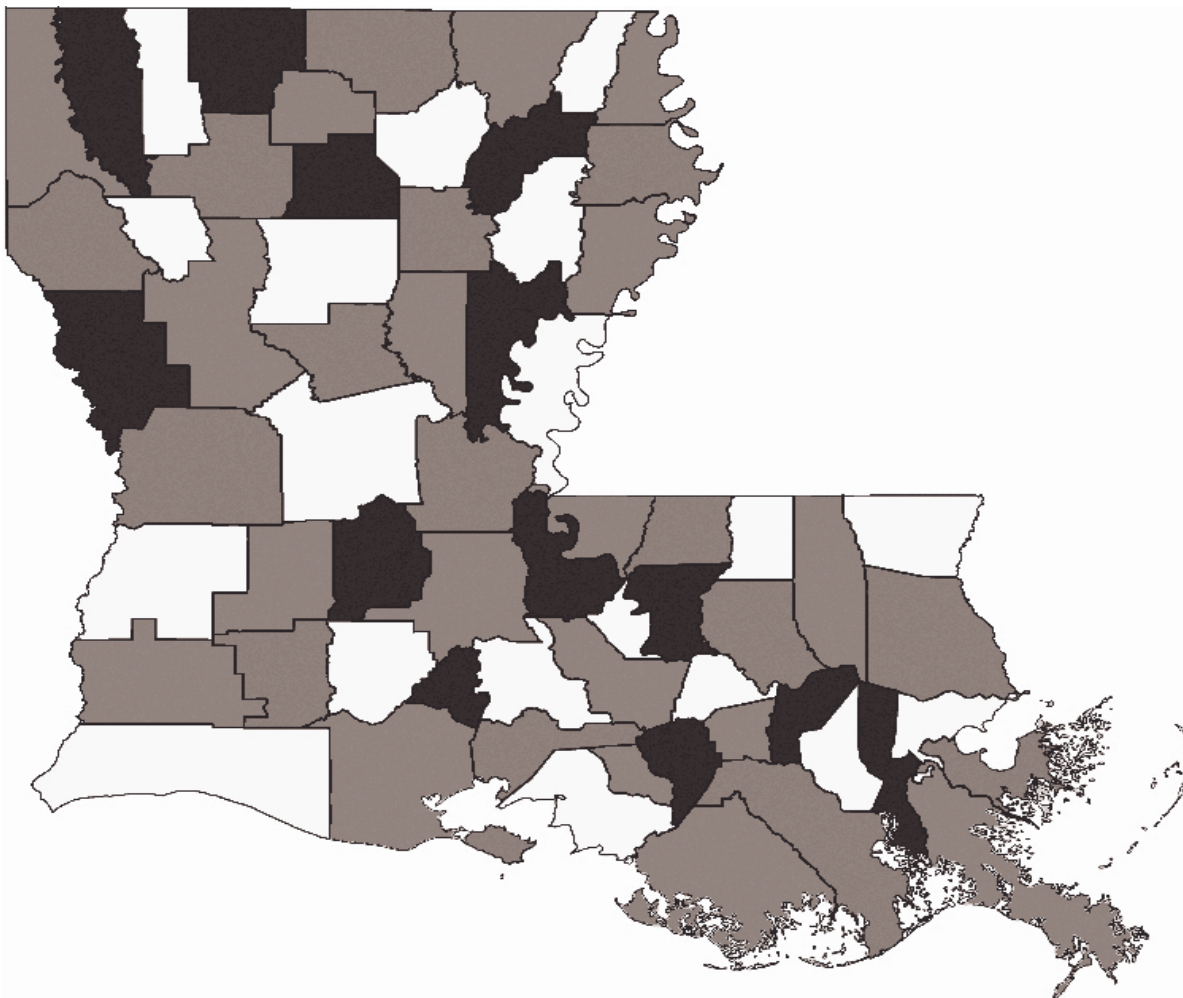


# Louisiana Quarterly Juvenile Justice Indicators

An up-to-date view of juvenile custody  
and supervision populations



- Acadia
- Allen
- Ascension
- Assumption
- Avoyelles
- Beauregard
- Bienville
- Bossier
- Caddo
- Calcasieu
- Caldwell
- Cameron
- Catahoula
- Claiborne
- Concordia
- De Soto
- East Baton Rouge
- East Carroll
- East Feliciana
- Evangeline
- Franklin
- Grant
- Iberia
- Iberville
- Jackson
- Jefferson
- Jefferson Davis
- Lafayette
- Lafourche
- Lasalle
- Lincoln
- Livingston
- Madison
- Morehouse
- Natchitoches
- Orleans
- Ouachita
- Plaquemines
- Pointe Coupee
- Rapides
- Red River
- Richland
- Sabine
- St. Bernard
- St. Charles
- St. Helena
- St. James
- St. John the Baptist
- St. Landry
- St. Martin
- St. Mary
- St. Tammany
- Tangipahoa
- Tensas
- Terrebonne
- Union
- Vermilion
- Vernon
- Washington
- Webster
- West Baton Rouge
- West Carroll
- West Feliciana
- Winn

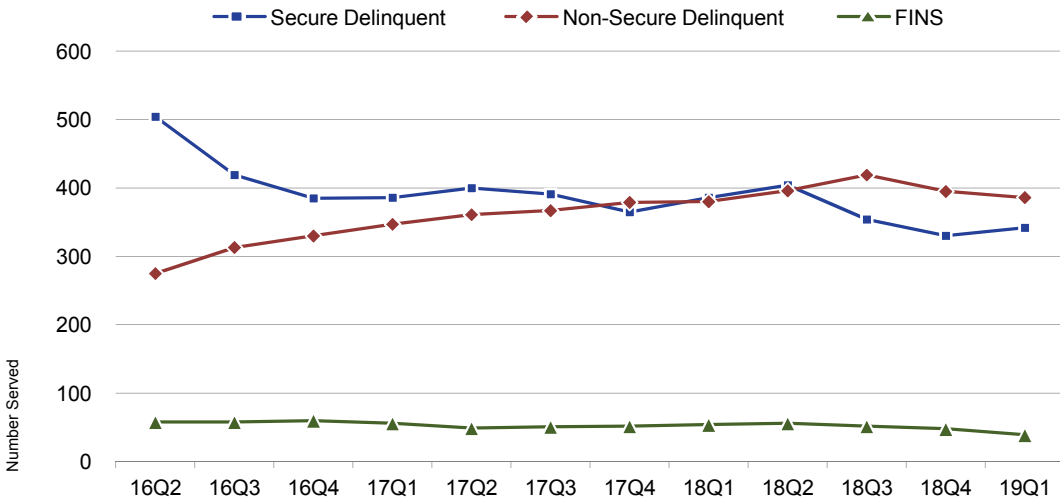
In Louisiana, juvenile sentencing practices can vary widely from parish to parish and are subject to change over time. The following report, issued quarterly, is designed to offer an up-to-date view of juvenile custody and supervision populations, both statewide and for all sixty-four parishes. For further background on data definitions, sources, and interpreting the document, please see the accompanying guide

It is our hope that monitoring these reports will help stakeholders at every level follow trends, inform planning, and identify areas in need of further investigation. The following observations are provided as examples to stimulate stakeholders to examine the data themselves with an eye toward local needs and concerns:

- During the first quarter of 2019 there were 342 youth served in a secure custody legal status, 386 non-secure custody, and 39 FINS custody statewide.
- Statewide, about 0.70 youth per thousand had a secure delinquent status; less than 0.80 per thousand had a non-secure delinquent status.
- African American youth are disproportionately represented in every custody and supervision status.
- Custody rates by parish widely diverge, with larger parishes distributed across the spectrum.

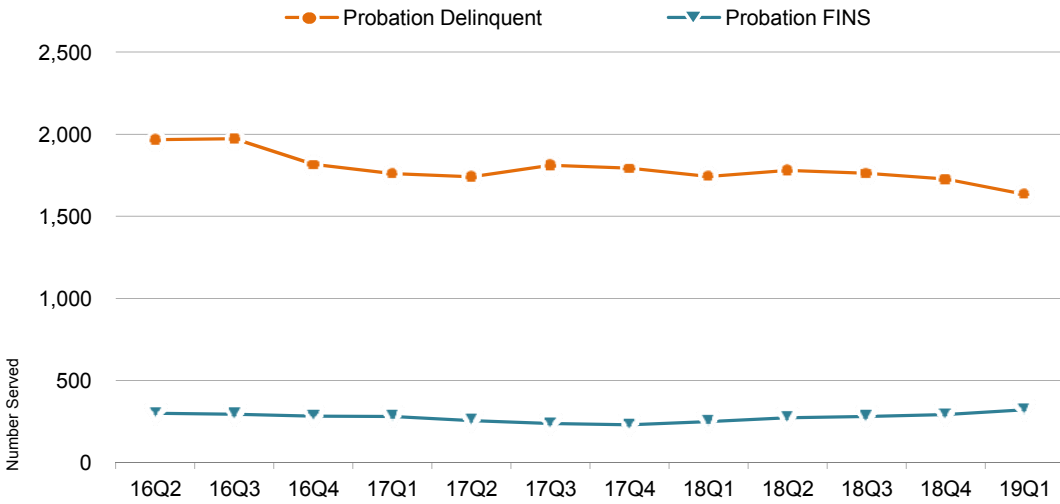
# Quarterly Statewide Trends: Youth Served

## CUSTODY TYPE



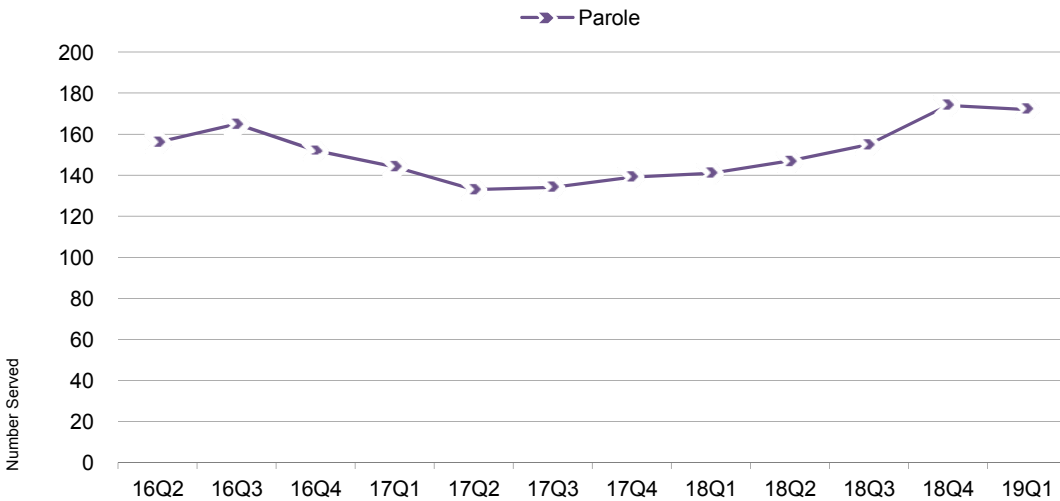
Youth Served			
	this quarter	% change from	
		last qtr	2 yrs ago
Secure	342	3.6%	-11.4%
Non-Sec.	386	-2.3%	11.2%
FINS	39	-18.8%	-30.4%

## PROBATION (Delinquent and FINS, not including local)



Youth Served			
	this quarter	% change from	
		last qtr	2 yrs ago
P. Delinq.	1,634	-5.3%	-7.2%
P. FINS	322	10.3%	14.6%

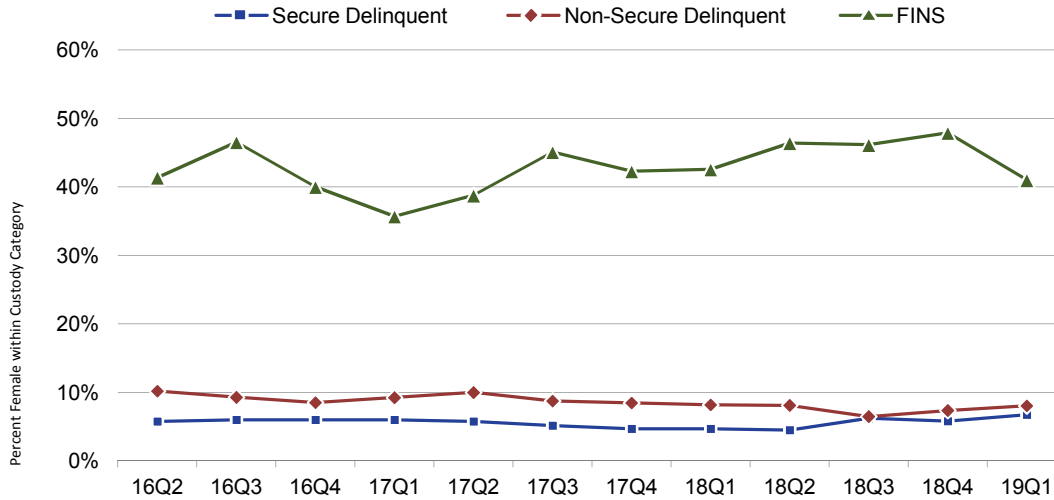
## PAROLE



Youth Served			
	this quarter	% change from	
		last qtr	2 yrs ago
Parole	172	-1.1%	19.4%

# Quarterly Statewide Trends: Youth Served

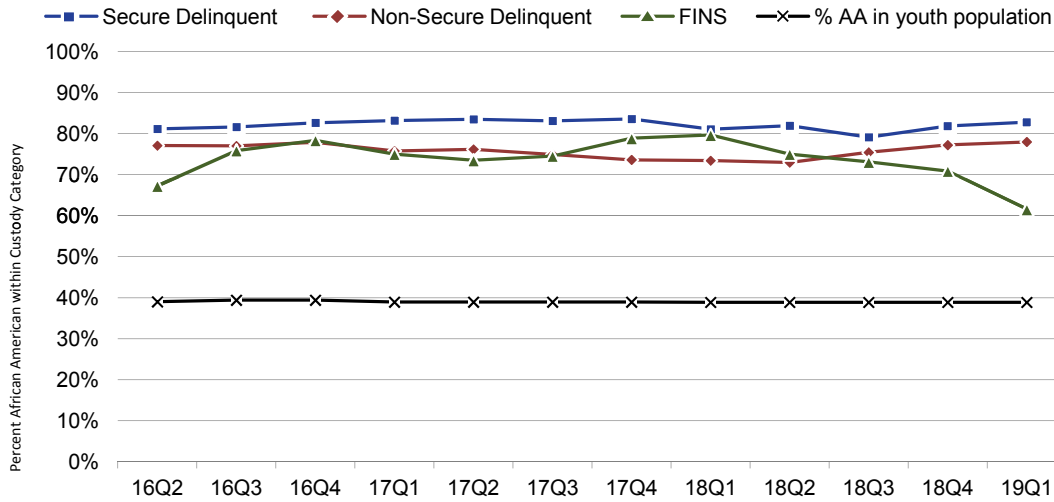
## CUSTODY TYPE BY % FEMALE



## Youth Served: Female

	this quarter	% change from	
		last qtr	2 yrs ago
Secure	23	21.1%	0.0%
Non-Sec.	31	6.9%	-3.1%
FINS	16	-30.4%	-20.0%
<b>Youth Served: Male</b>			
Secure	319	2.6%	-12.1%
Non-Sec.	355	-3.0%	12.7%
FINS	23	-8.0%	-36.1%

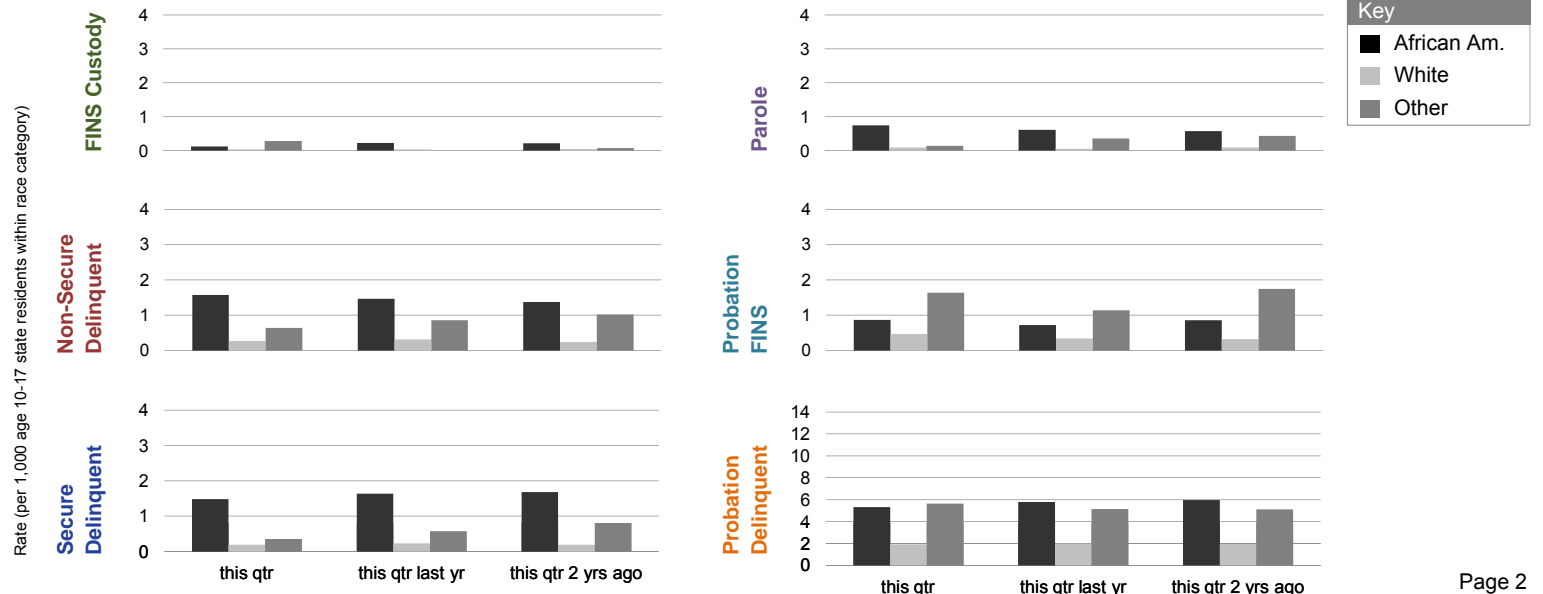
## CUSTODY TYPE BY % AFRICAN AMERICAN



## Youth Served: African American

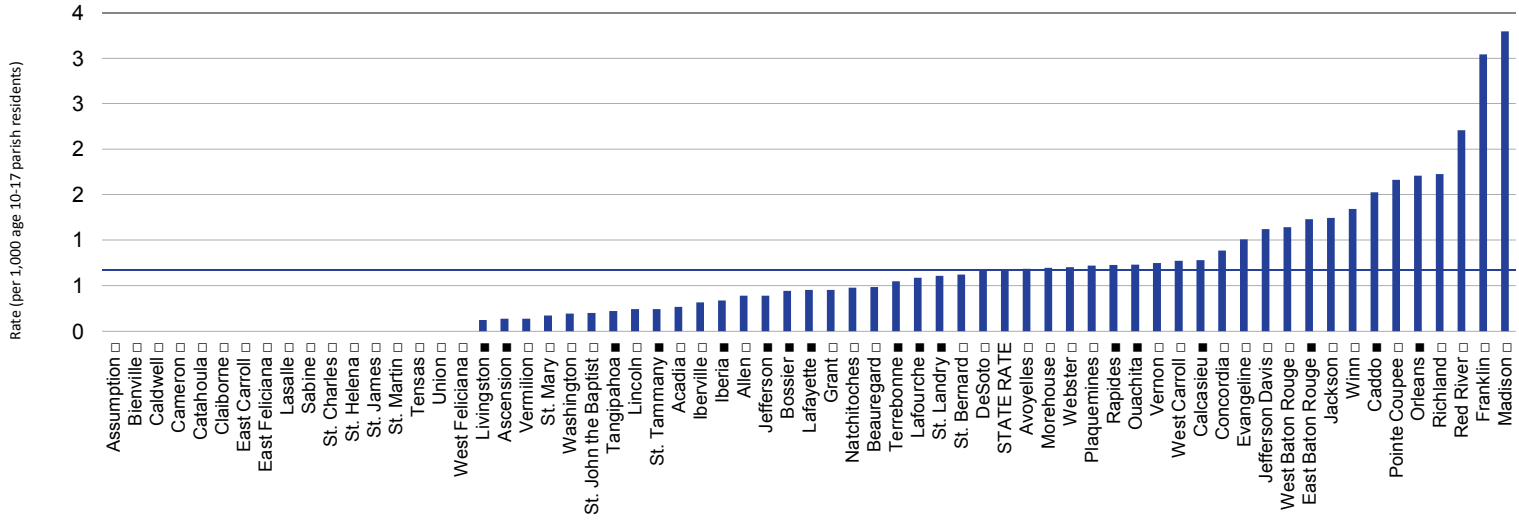
	this quarter	% change from	
		last qtr	2 yrs ago
Secure	283	4.8%	-11.8%
Non-Sec.	301	-1.3%	14.4%
FINS	24	-29.4%	-42.9%
<b>Youth Served: White</b>			
Secure	54	5.9%	0.0%
Non-Sec.	76	-7.3%	8.6%
FINS	11	22.2%	-15.4%
<b>Youth Served: Other</b>			
Secure	5	-44.4%	-54.5%
Non-Sec.	9	12.5%	-35.7%
FINS	4	-20%	300%

## CUSTODY TYPE, PROBATION, AND PAROLE RATES BY RACE

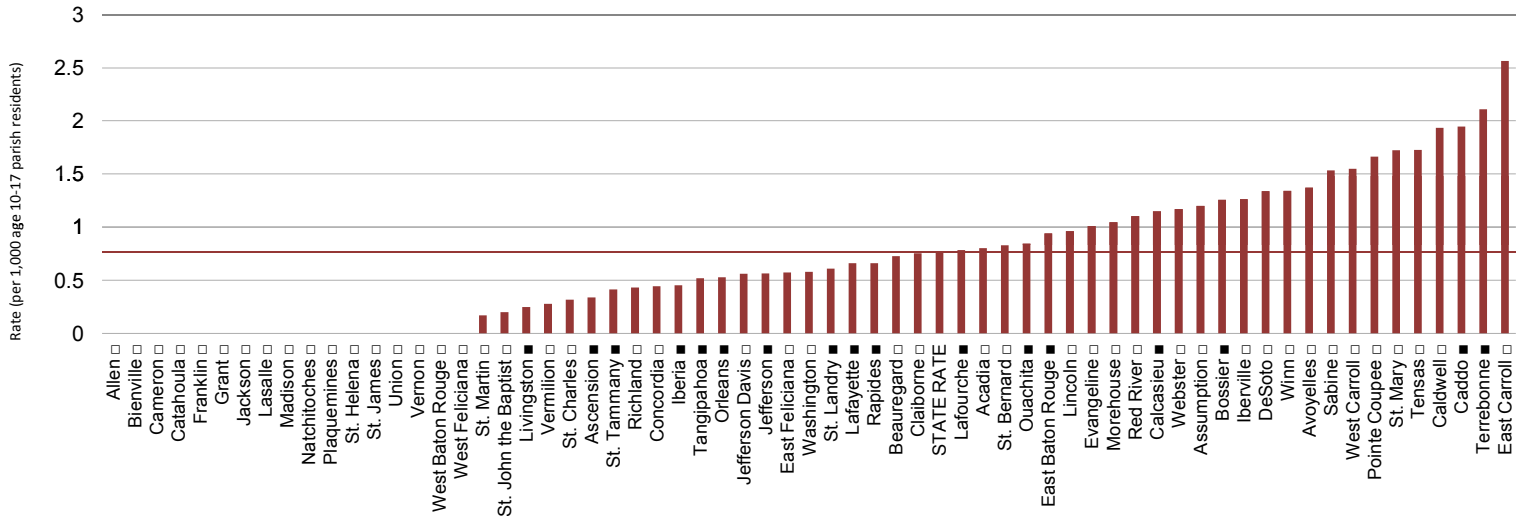


# Current Quarter: Parish Comparisons by Custody Type

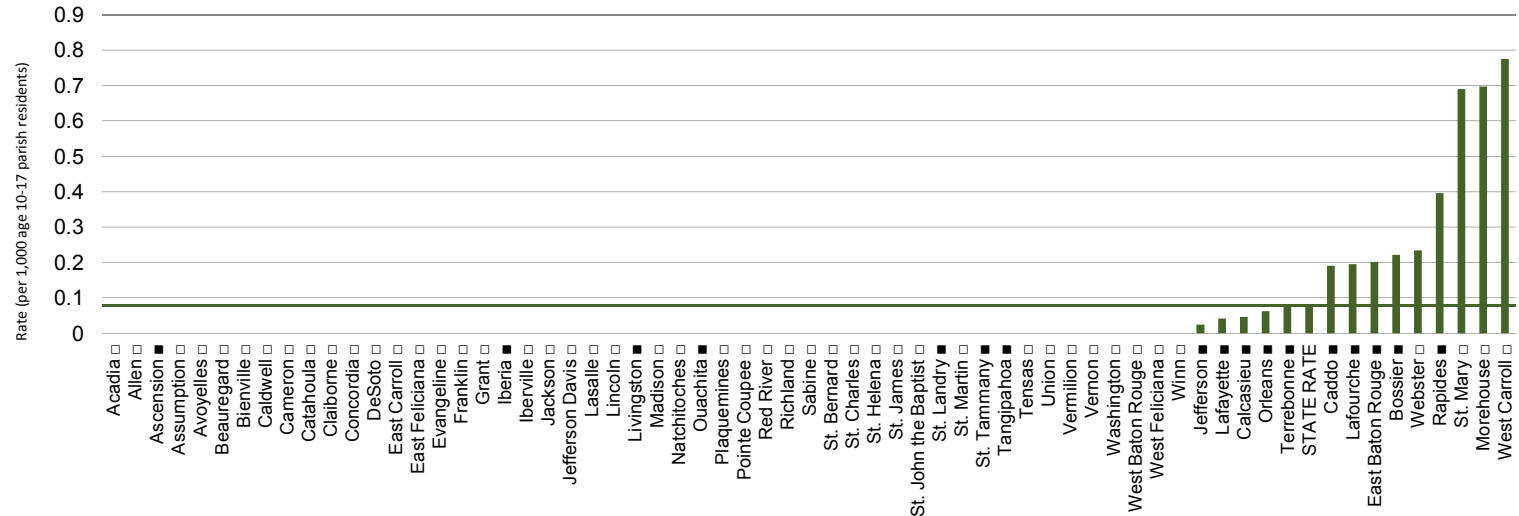
## SECURE DELINQUENT CUSTODY



## NON-SECURE DELINQUENT CUSTODY



## FINS CUSTODY



## Secure Delinquent Custody

**2019**  
**1st Quarter**

	This Quarter		Last Quarter		This Quarter Last Year		This Qtr's variance from state rate		12 Qtr Trend	Demographics				
	Number	Rate*	Number	Rate*	Number	Rate*	Female			African American		Variance from tll parish rate		
							Percent	Percent	Rate**	-10	+10			
State Total† ▶	342	0.70	330	0.67	386	0.79	-----			7%	83%	1.48		
Acadia □	2	0.27	2	0.27	1	0.13				0%	100%	1.21		
Allen □	1	0.39	2	0.78	3	1.17				0%	0%	0.00		
Ascension ■	2	0.14	3	0.20	3	0.20				0%	100%	0.51		
Assumption □	0	0.00	2	0.80	0	0.00				N/A	N/A	0.00		
Avoyelles □	3	0.69	2	0.46	2	0.46				0%	100%	2.03		
Beauregard □	2	0.48	2	0.48	3	0.73				50%	0%	0.00		
Bienville □	0	0.00	0	0.00	1	0.68				N/A	N/A	0.00		
Bossier ■	6	0.44	6	0.44	6	0.44				0%	50%	0.80		
Caddo ■	40	1.53	33	1.26	38	1.45				3%	95%	2.52		
Calcasieu ■	17	0.78	14	0.64	18	0.83				6%	94%	2.37		
Caldwell □	0	0.00	0	0.00	0	0.00				N/A	N/A	0.00		
Cameron □	0	0.00	0	0.00	0	0.00				N/A	N/A	0.00		
Catahoula □	0	0.00	0	0.00	0	0.00				N/A	N/A	0.00		
Claiborne □	0	0.00	2	1.51	2	1.51				N/A	N/A	0.00		
Concordia □	2	0.89	2	0.89	1	0.44				0%	100%	1.89		
De Soto □	2	0.67	1	0.33	2	0.67				0%	100%	1.61		
East Baton Rouge ■	55	1.23	60	1.34	81	1.81				15%	96%	2.00		
East Carroll □	0	0.00	0	0.00	0	0.00				N/A	N/A	0.00		
East Feliciana □	0	0.00	0	0.00	0	0.00				N/A	N/A	0.00		
Evangeline □	4	1.01	2	0.50	6	1.51				0%	75%	2.29		
Franklin □	7	3.04	10	4.35	10	4.35				14%	57%	4.38		
Grant □	1	0.45	1	0.45	0	0.00				0%	0%	0.00		
Iberia ■	3	0.34	3	0.34	3	0.34				0%	100%	0.87		
Iberville □	1	0.32	1	0.32	1	0.32				0%	100%	0.55		
Jackson □	2	1.25	2	1.25	2	1.25				0%	50%	2.06		
Jefferson ■	16	0.39	16	0.39	18	0.44				13%	88%	0.94		
Jefferson Davis □	4	1.12	5	1.40	3	0.84				0%	25%	1.34		
Lafayette ■	11	0.45	7	0.29	11	0.45				0%	91%	1.22		
Lafourche ■	6	0.59	5	0.49	7	0.68				0%	83%	2.76		
Lasalle □	0	0.00	0	0.00	1	0.65				N/A	N/A	0.00		
Lincoln □	1	0.24	2	0.48	2	0.48				0%	100%	0.54		
Livingston ■	2	0.12	2	0.12	2	0.12				0%	50%	0.78		
Madison □	4	3.29	3	2.47	3	2.47				0%	100%	4.53		
Morehouse □	2	0.70	2	0.70	6	2.09				50%	100%	1.20		
Natchitoches □	2	0.48	0	0.00	1	0.24				0%	100%	0.93		
Orleans ■	55	1.71	55	1.71	48	1.49				7%	93%	2.07		
Ouachita ■	13	0.73	13	0.73	12	0.67				8%	69%	1.11		
Plaquemines □	2	0.72	1	0.36	1	0.36				0%	50%	1.54		
Pointe Coupee □	4	1.66	4	1.66	2	0.83				0%	25%	1.00		
Rapides ■	11	0.73	10	0.66	4	0.26				9%	73%	1.37		
Red River □	2	2.21	0	0.00	0	0.00				0%	100%	4.43		
Richland □	4	1.73	6	2.59	10	4.32				0%	100%	4.08		
Sabine □	0	0.00	0	0.00	1	0.38				N/A	N/A	0.00		
St. Bernard □	3	0.62	2	0.41	2	0.41				33%	100%	1.99		
St. Charles □	0	0.00	0	0.00	0	0.00				N/A	N/A	0.00		
St. Helena □	0	0.00	0	0.00	0	0.00				N/A	N/A	0.00		
St. James □	0	0.00	0	0.00	0	0.00				N/A	N/A	0.00		
St. John the Baptist □	1	0.20	1	0.20	0	0.00				0%	0%	0.00		
St. Landry ■	6	0.61	5	0.51	1	0.10				0%	83%	1.06		
St. Martin □	0	0.00	0	0.00	1	0.17				N/A	N/A	0.00		
St. Mary □	1	0.17	1	0.17	1	0.17				0%	0%	0.00		
St. Tammany ■	7	0.24	7	0.24	13	0.45				0%	29%	0.44		
Tangipahoa ■	3	0.22	1	0.07	4	0.30				0%	100%	0.56		
Tensas □	0	0.00	0	0.00	0	0.00				N/A	N/A	0.00		
Terrebonne ■	7	0.55	7	0.55	13	1.02				0%	100%	2.30		
Union □	0	0.00	0	0.00	0	0.00				N/A	N/A	0.00		
Vermilion □	1	0.14	1	0.14	3	0.41				0%	0%	0.00		
Vernon □	4	0.75	4	0.75	5	0.94				0%	50%	2.04		
Washington □	1	0.19	3	0.58	3	0.58				0%	100%	0.52		
Webster □	3	0.70	3	0.70	4	0.94				0%	67%	1.14		
West Baton Rouge □	3	1.14	4	1.52	2	0.76				0%	100%	2.57		
West Carroll □	1	0.77	2	1.55	3	2.32				0%	0%	0.00		
West Feliciana □	0	0.00	0	0.00	0	0.00				N/A	N/A	0.00		
Winn □	2	1.34	2	1.34	2	1.34				50%	50%	1.98		

\* Per 1,000 age 10-17 parish residents based on yearly population estimates

\*\* Per 1,000 age 10-17 African American parish residents based on yearly population estimates

† Youth without a Parish designation and Out of State youth are included

## Non-Secure Delinquent Custody

**2019**  
**1st Quarter**

	This Quarter		Last Quarter		This Quarter Last Year		This Qtr's variance from state rate		12 Qtr Trend	Demographics				
	Number	Rate*	Number	Rate*	Number	Rate*	Female			African American		Variance from tll parish rate		
							Percent	Percent	Rate**	-10	+10			
State Total† ►	386	0.79	395	0.80	380	0.77	-----			8%	78%	1.58		
Acadia □	6	0.80	5	0.67	1	0.13				0%	67%	2.42		
Allen □	0	0.00	0	0.00	3	1.17				N/A	N/A	0.00		
Ascension ■	5	0.34	4	0.27	4	0.27				0%	60%	0.77		
Assumption □	3	1.20	2	0.80	0	0.00				0%	100%	3.20		
Avoyelles □	6	1.37	4	0.91	1	0.23				0%	67%	2.71		
Beauregard □	3	0.73	4	0.97	6	1.45				0%	33%	1.60		
Bienville □	0	0.00	0	0.00	0	0.00				N/A	N/A	0.00		
Bossier ■	17	1.26	16	1.18	19	1.40				6%	82%	3.71		
Caddo ■	51	1.95	48	1.83	54	2.06				12%	90%	3.05		
Calcasieu ■	25	1.15	23	1.06	22	1.01				20%	80%	2.97		
Caldwell □	2	1.93	1	0.97	1	0.97				0%	100%	10.75		
Cameron □	0	0.00	0	0.00	0	0.00				N/A	N/A	0.00		
Catahoula □	0	0.00	0	0.00	0	0.00				N/A	N/A	0.00		
Claiborne □	1	0.75	0	0.00	0	0.00				0%	100%	1.38		
Concordia □	1	0.44	1	0.44	2	0.89				0%	100%	0.95		
De Soto □	4	1.34	3	1.00	0	0.00				0%	50%	1.61		
East Baton Rouge ■	42	0.94	53	1.19	53	1.19				2%	98%	1.55		
East Carroll □	2	2.56	1	1.28	0	0.00				0%	100%	3.47		
East Feliciana □	1	0.57	1	0.57	2	1.14				0%	100%	1.18		
Evangeline □	4	1.01	7	1.76	3	0.76				0%	100%	3.06		
Franklin □	0	0.00	0	0.00	0	0.00				N/A	N/A	0.00		
Grant □	0	0.00	2	0.91	4	1.81				N/A	N/A	0.00		
Iberia ■	4	0.45	3	0.34	3	0.34				0%	100%	1.16		
Iberville □	4	1.26	2	0.63	2	0.63				0%	100%	2.20		
Jackson □	0	0.00	0	0.00	0	0.00				N/A	N/A	0.00		
Jefferson ■	23	0.56	27	0.66	22	0.54				17%	70%	1.08		
Jefferson Davis □	2	0.56	0	0.00	3	0.84				0%	0%	0.00		
Lafayette ■	16	0.66	13	0.54	12	0.49				6%	75%	1.47		
Lafourche ■	8	0.78	10	0.98	5	0.49				25%	50%	2.21		
Lasalle □	0	0.00	0	0.00	0	0.00				N/A	N/A	0.00		
Lincoln □	4	0.96	3	0.72	3	0.72				0%	100%	2.14		
Livingston ■	4	0.25	7	0.43	11	0.68				25%	0%	0.00		
Madison □	0	0.00	0	0.00	0	0.00				N/A	N/A	0.00		
Morehouse □	3	1.05	2	0.70	6	2.09				0%	67%	1.20		
Natchitoches □	0	0.00	1	0.24	0	0.00				N/A	N/A	0.00		
Orleans ■	17	0.53	16	0.50	14	0.43				6%	100%	0.69		
Ouachita ■	15	0.84	11	0.62	11	0.62				13%	67%	1.23		
Plaquemines □	0	0.00	0	0.00	1	0.36				N/A	N/A	0.00		
Pointe Coupee □	4	1.66	3	1.25	5	2.08				0%	50%	1.99		
Rapides ■	10	0.66	14	0.92	11	0.73				0%	90%	1.54		
Red River □	1	1.10	1	1.10	0	0.00				0%	100%	2.22		
Richland □	1	0.43	1	0.43	0	0.00				0%	100%	1.02		
Sabine □	4	1.53	5	1.92	2	0.77				0%	75%	5.17		
St. Bernard □	4	0.83	7	1.45	5	1.04				0%	75%	1.99		
St. Charles □	2	0.32	3	0.48	3	0.48				50%	50%	0.54		
St. Helena □	0	0.00	0	0.00	0	0.00				N/A	N/A	0.00		
St. James □	0	0.00	0	0.00	1	0.43				N/A	N/A	0.00		
St. John the Baptist □	1	0.20	3	0.60	0	0.00				0%	100%	0.31		
St. Landry ■	6	0.61	6	0.61	9	0.91				0%	83%	1.06		
St. Martin □	1	0.17	0	0.00	1	0.17				0%	100%	0.46		
St. Mary □	10	1.72	7	1.21	4	0.69				10%	40%	1.88		
St. Tammany ■	12	0.41	12	0.41	16	0.55				8%	75%	1.98		
Tangipahoa ■	7	0.52	8	0.59	8	0.59				29%	71%	0.94		
Tensas □	1	1.73	1	1.73	2	3.45				0%	100%	2.67		
Terrebonne ■	27	2.11	28	2.19	20	1.56				7%	63%	5.60		
Union □	0	0.00	0	0.00	1	0.44				N/A	N/A	0.00		
Vermilion □	2	0.28	4	0.55	2	0.28				0%	50%	0.72		
Vernon □	0	0.00	2	0.37	1	0.19				N/A	N/A	0.00		
Washington □	3	0.58	3	0.58	0	0.00				0%	100%	1.57		
Webster □	5	1.17	4	0.94	8	1.87				0%	60%	1.70		
West Baton Rouge □	0	0.00	0	0.00	0	0.00				N/A	N/A	0.00		
West Carroll □	2	1.55	1	0.77	0	0.00				0%	50%	3.98		
West Feliciana □	0	0.00	0	0.00	0	0.00				N/A	N/A	0.00		
Winn □	2	1.34	2	1.34	0	0.00				0%	100%	3.96		

\* Per 1,000 age 10-17 parish residents based on yearly population estimates

\*\* Per 1,000 age 10-17 African American parish residents based on yearly population estimates

† Youth without a Parish designation and Out of State youth are included

**FINS Custody**

**2019  
1st Quarter**

	This Quarter		Last Quarter		This Quarter Last Year		This Qtr's variance from state rate	12 Qtr Trend	Demographics			Variance from tll parish rate	
	Number	Rate*	Number	Rate*	Number	Rate*			Female	African American			
									This Qtr Percent	This Qtr Percent	Rate**	-10	+10
State Total† ▶	39	0.08	48	0.10	54	0.11	-----		41%	62%	0.13		
Acadia □	0	0.00	0	0.00	0	0.00			N/A	N/A	0.00		
Allen □	0	0.00	0	0.00	0	0.00			N/A	N/A	0.00		
Ascension ■	0	0.00	0	0.00	0	0.00			N/A	N/A	0.00		
Assumption □	0	0.00	0	0.00	0	0.00			N/A	N/A	0.00		
Avoyelles □	0	0.00	2	0.46	1	0.23			N/A	N/A	0.00		
Beauregard □	0	0.00	0	0.00	0	0.00			N/A	N/A	0.00		
Bienville □	0	0.00	0	0.00	0	0.00			N/A	N/A	0.00		
Bossier ■	3	0.22	5	0.37	1	0.07			100%	0%	0.00		
Caddo ■	5	0.19	2	0.08	4	0.15			40%	40%	0.13		
Calcasieu ■	1	0.05	1	0.05	0	0.00			100%	0%	0.00		
Caldwell □	0	0.00	0	0.00	0	0.00			N/A	N/A	0.00		
Cameron □	0	0.00	0	0.00	0	0.00			N/A	N/A	0.00		
Catahoula □	0	0.00	0	0.00	0	0.00			N/A	N/A	0.00		
Claiborne □	0	0.00	0	0.00	0	0.00			N/A	N/A	0.00		
Concordia □	0	0.00	0	0.00	0	0.00			N/A	N/A	0.00		
De Soto □	0	0.00	0	0.00	0	0.00			N/A	N/A	0.00		
East Baton Rouge ■	9	0.20	12	0.27	15	0.34			44%	100%	0.34		
East Carroll □	0	0.00	0	0.00	0	0.00			N/A	N/A	0.00		
East Feliciana □	0	0.00	0	0.00	0	0.00			N/A	N/A	0.00		
Evangeline □	0	0.00	0	0.00	0	0.00			N/A	N/A	0.00		
Franklin □	0	0.00	0	0.00	0	0.00			N/A	N/A	0.00		
Grant □	0	0.00	0	0.00	0	0.00			N/A	N/A	0.00		
Iberia ■	0	0.00	0	0.00	1	0.11			N/A	N/A	0.00		
Iberville □	0	0.00	0	0.00	0	0.00			N/A	N/A	0.00		
Jackson □	0	0.00	0	0.00	0	0.00			N/A	N/A	0.00		
Jefferson ■	1	0.02	2	0.05	2	0.05			0%	0%	0.00		
Jefferson Davis □	0	0.00	0	0.00	0	0.00			N/A	N/A	0.00		
Lafayette ■	1	0.04	1	0.04	1	0.04			0%	0%	0.00		
Lafourche ■	2	0.20	1	0.10	1	0.10			50%	0%	0.00		
Lasalle □	0	0.00	0	0.00	0	0.00			N/A	N/A	0.00		
Lincoln □	0	0.00	0	0.00	0	0.00			N/A	N/A	0.00		
Livingston ■	0	0.00	0	0.00	1	0.06			N/A	N/A	0.00		
Madison □	0	0.00	0	0.00	0	0.00			N/A	N/A	0.00		
Morehouse □	2	0.70	2	0.70	4	1.39			0%	100%	1.20		
Natchitoches □	0	0.00	0	0.00	0	0.00			N/A	N/A	0.00		
Orleans ■	2	0.06	2	0.06	1	0.03			50%	100%	0.08		
Ouachita ■	0	0.00	0	0.00	0	0.00			N/A	N/A	0.00		
Plaquemines □	0	0.00	0	0.00	0	0.00			N/A	N/A	0.00		
Pointe Coupee □	0	0.00	0	0.00	0	0.00			N/A	N/A	0.00		
Rapides ■	6	0.40	5	0.33	7	0.46			50%	83%	0.86		
Red River □	0	0.00	0	0.00	0	0.00			N/A	N/A	0.00		
Richland □	0	0.00	0	0.00	0	0.00			N/A	N/A	0.00		
Sabine □	0	0.00	0	0.00	0	0.00			N/A	N/A	0.00		
St. Bernard □	0	0.00	0	0.00	0	0.00			N/A	N/A	0.00		
St. Charles □	0	0.00	0	0.00	0	0.00			N/A	N/A	0.00		
St. Helena □	0	0.00	0	0.00	0	0.00			N/A	N/A	0.00		
St. James □	0	0.00	0	0.00	0	0.00			N/A	N/A	0.00		
St. John the Baptist □	0	0.00	0	0.00	0	0.00			N/A	N/A	0.00		
St. Landry ■	0	0.00	0	0.00	0	0.00			N/A	N/A	0.00		
St. Martin □	0	0.00	0	0.00	0	0.00			N/A	N/A	0.00		
St. Mary □	4	0.69	6	1.03	5	0.86			0%	25%	0.47		
St. Tammany ■	0	0.00	0	0.00	0	0.00			N/A	N/A	0.00		
Tangipahoa ■	0	0.00	0	0.00	0	0.00			N/A	N/A	0.00		
Tensas □	0	0.00	0	0.00	0	0.00			N/A	N/A	0.00		
Terrebonne ■	1	0.08	2	0.16	2	0.16			100%	100%	0.33		
Union □	0	0.00	0	0.00	0	0.00			N/A	N/A	0.00		
Vermilion □	0	0.00	0	0.00	0	0.00			N/A	N/A	0.00		
Vernon □	0	0.00	0	0.00	2	0.37			N/A	N/A	0.00		
Washington □	0	0.00	0	0.00	0	0.00			N/A	N/A	0.00		
Webster □	1	0.23	3	0.70	5	1.17			0%	100%	0.57		
West Baton Rouge □	0	0.00	0	0.00	0	0.00			N/A	N/A	0.00		
West Carroll □	1	0.77	1	0.77	0	0.00			0%	100%	3.98		
West Feliciana □	0	0.00	0	0.00	0	0.00			N/A	N/A	0.00		
Winn □	0	0.00	1	0.67	0	0.00			N/A	N/A	0.00		

\* Per 1,000 age 10-17 parish residents based on yearly population estimates  
 \*\* Per 1,000 age 10-17 African American parish residents based on yearly population estimates  
 † Youth without a Parish designation and Out of State youth are included