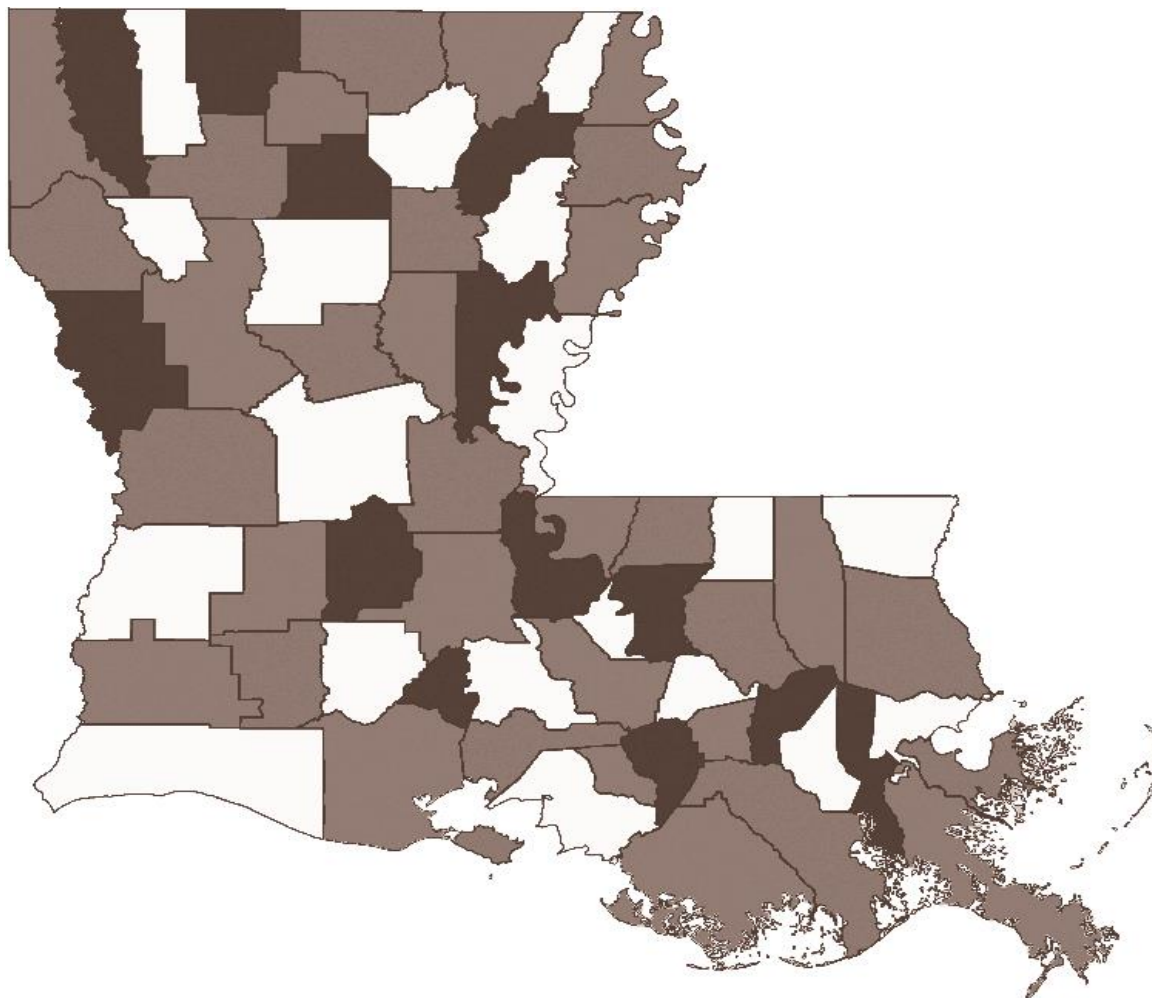


# Louisiana Quarterly Juvenile Justice Indicators

An up-to-date view of juvenile custody  
and supervision populations



- Acadia
- Allen
- Ascension
- Assumption
- Avoyelles
- Beauregard
- Bienville
- Bossier
- Caddo
- Calcasieu
- Caldwell
- Cameron
- Catahoula
- Claiborne
- Concordia
- De Soto
- East Baton Rouge
- East Carroll
- East Feliciana
- Evangeline
- Franklin
- Grant
- Iberia
- Iberville
- Jackson
- Jefferson
- Jefferson Davis
- Lafayette
- Lafourche
- Lasalle
- Lincoln
- Livingston
- Madison
- Morehouse
- Natchitoches
- Orleans
- Ouachita
- Plaquemines
- Pointe Coupee
- Rapides
- Red River
- Richland
- Sabine
- St. Bernard
- St. Charles
- St. Helena
- St. James
- St. John the Baptist
- St. Landry
- St. Martin
- St. Mary
- St. Tammany
- Tangipahoa
- Tensas
- Terrebonne
- Union
- Vermilion
- Vernon
- Washington
- Webster
- West Baton Rouge
- West Carroll
- West Feliciana
- Winn

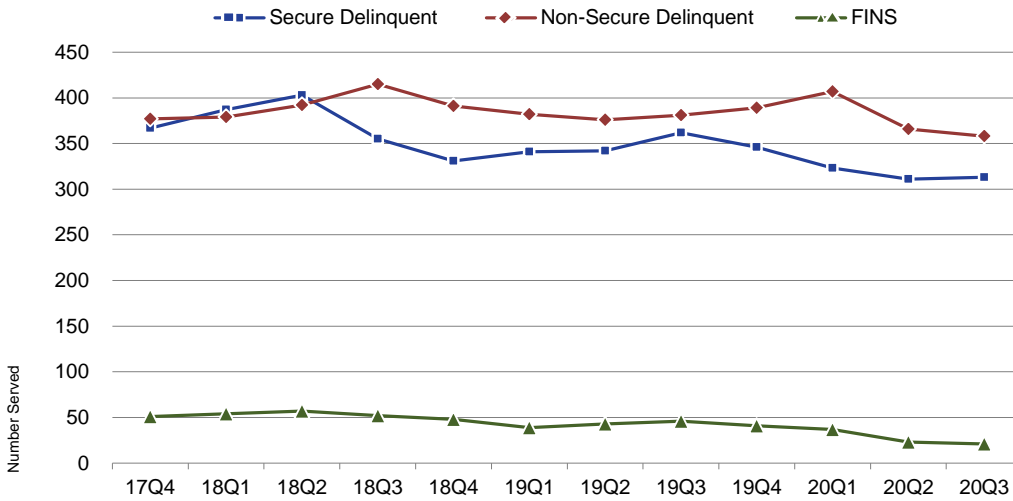
In Louisiana, juvenile sentencing practices can vary widely from parish to parish and are subject to change over time. The following report, issued quarterly, is designed to offer an up-to-date view of juvenile custody and supervision populations, both statewide and for all sixty-four parishes. For further background on data definitions, sources, and interpreting the document, please see the accompanying guide

It is our hope that monitoring these reports will help stakeholders at every level follow trends, inform planning, and identify areas in need of further investigation. The following observations are provided as examples to stimulate stakeholders to examine the data themselves with an eye toward local needs and concerns:

- During the third quarter of 2020 there were 313 youth served in a secure custody legal status, 358 non-secure custody, and 21 FINS custody statewide.
- Statewide, about 0.64 youth per thousand had a secure delinquent status; less than 0.74 per thousand had a non-secure delinquent status.
- African American youth are disproportionately represented in every custody and supervision status.
- Custody rates by parish widely diverge, with larger parishes distributed across the spectrum.

# Quarterly Statewide Trends: Youth Served

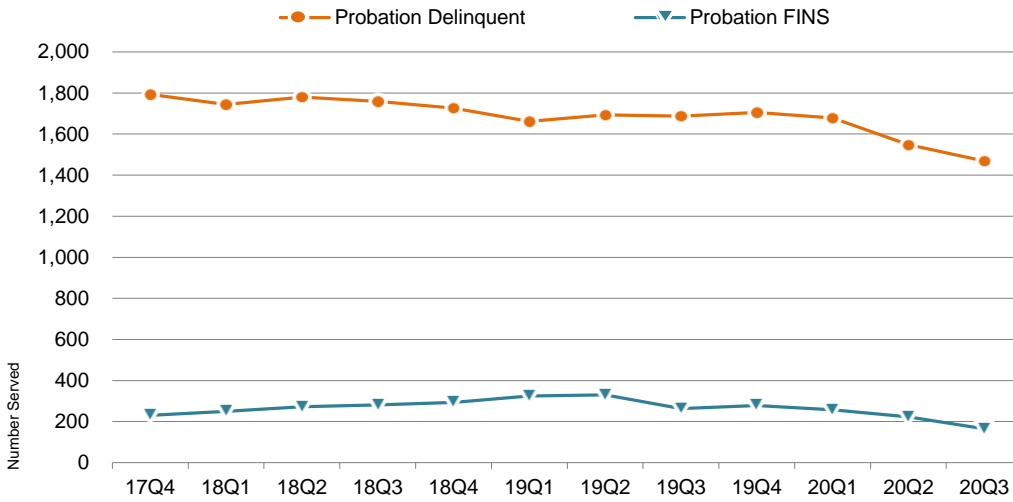
## CUSTODY TYPE



## Youth Served

	this quarter	% change from	
		last qtr	2 yrs ago
Secure	313	0.6%	-11.8%
Non-Sec.	358	-2.2%	-13.7%
FINS	21	-8.7%	-59.6%

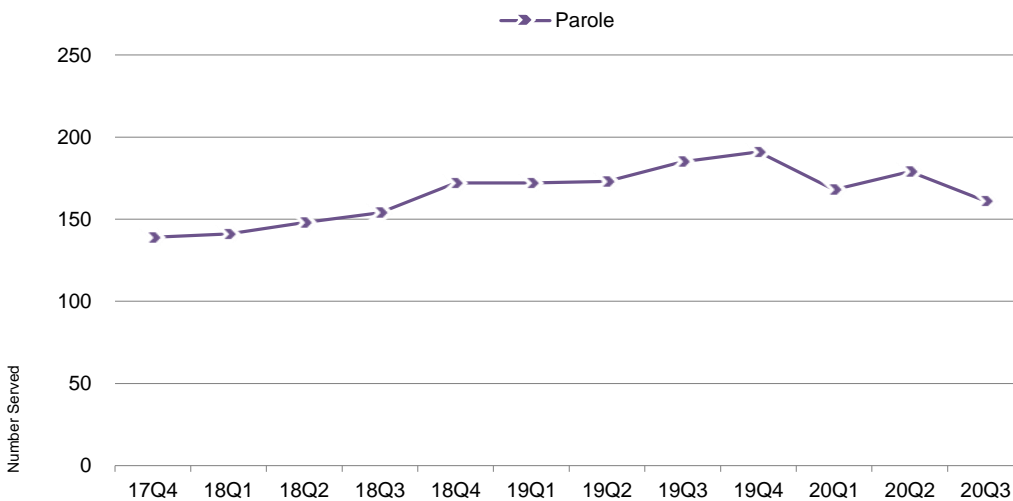
## PROBATION (Delinquent and FINS, not including local)



## Youth Served

	this quarter	% change from	
		last qtr	2 yrs ago
P. Delinq.	1,469	-5.1%	-16.5%
P. FINS	165	-26.0%	-41.3%

## PAROLE

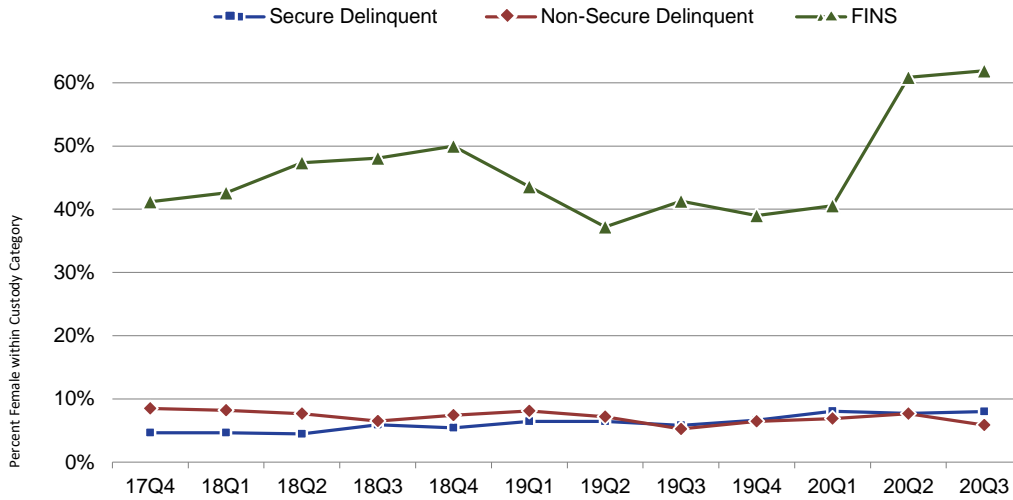


## Youth Served

	this quarter	% change from	
		last qtr	2 yrs ago
Parole	161	-10.1%	4.5%

# Quarterly Statewide Trends: Youth Served

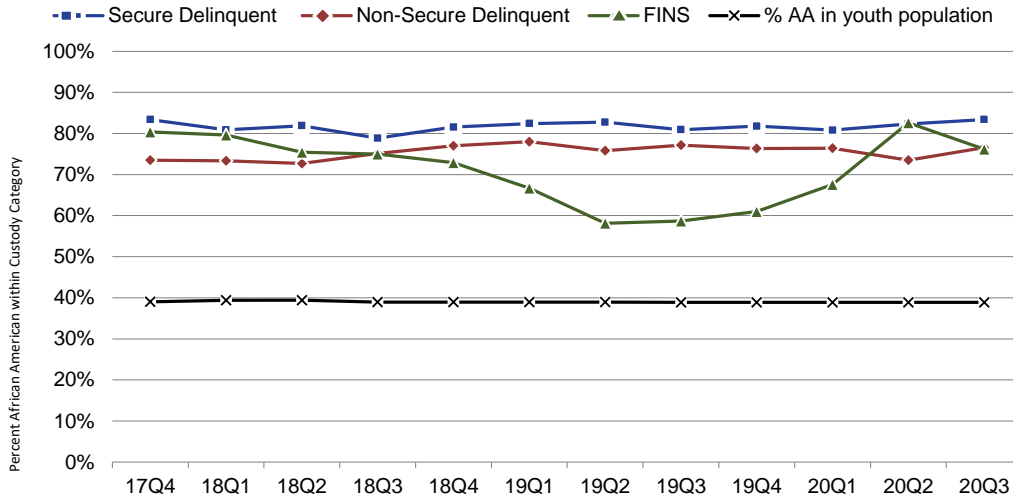
## CUSTODY TYPE BY % FEMALE



## Youth Served: Female

	this quarter	% change from	
		last qtr	2 yrs ago
Secure	25	4.2%	19.0%
Non-Sec.	21	-25.0%	-22.2%
FINS	13	-7.1%	-48.0%
<b>Youth Served: Male</b>			
Secure	288	0.3%	-13.8%
Non-Sec.	337	-0.3%	-13.1%
FINS	8	-11.1%	-70.4%

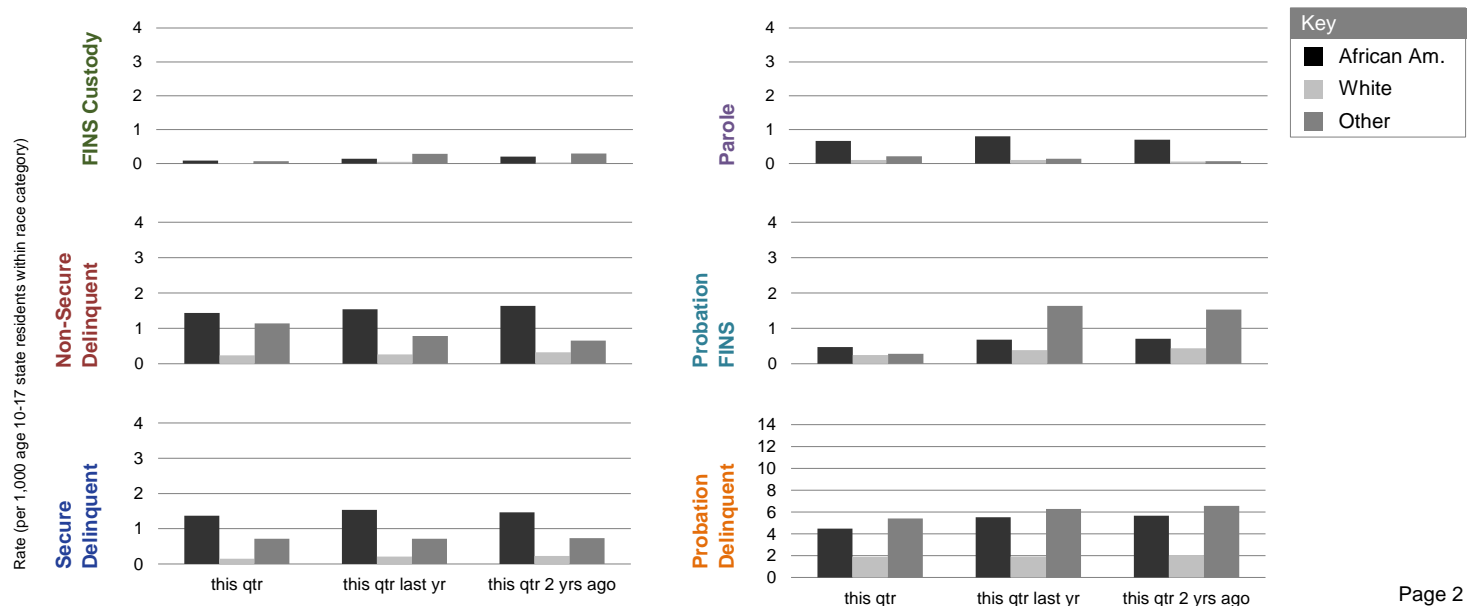
## CUSTODY TYPE BY % AFRICAN AMERICAN



## Youth Served: African American

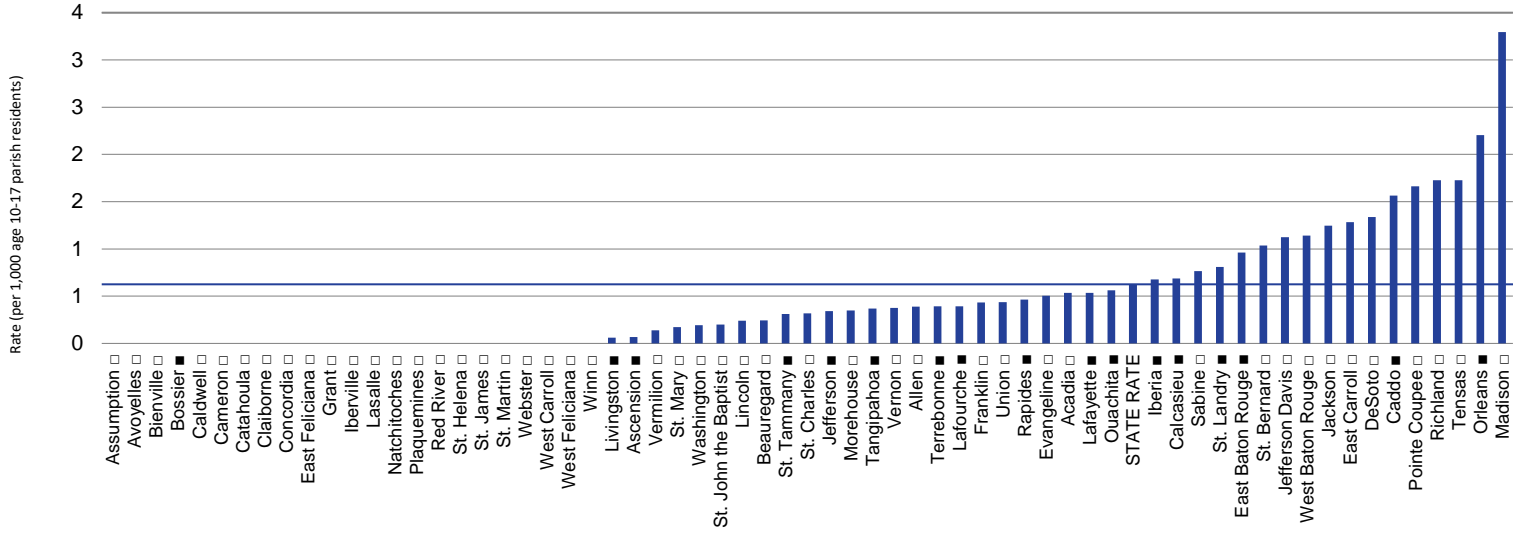
	this quarter	% change from	
		last qtr	2 yrs ago
Secure	261	2.0%	-6.8%
Non-Sec.	274	1.9%	-12.2%
FINS	16	-15.8%	-59.0%
<b>Youth Served: White</b>			
Secure	42	-8.7%	-35.4%
Non-Sec.	68	-8.1%	-27.7%
FINS	4	33.3%	-55.6%
<b>Youth Served: Other</b>			
Secure	10	11.1%	0.0%
Non-Sec.	16	-30.4%	77.8%
FINS	1	0%	400%

## CUSTODY TYPE, PROBATION, AND PAROLE RATES BY RACE

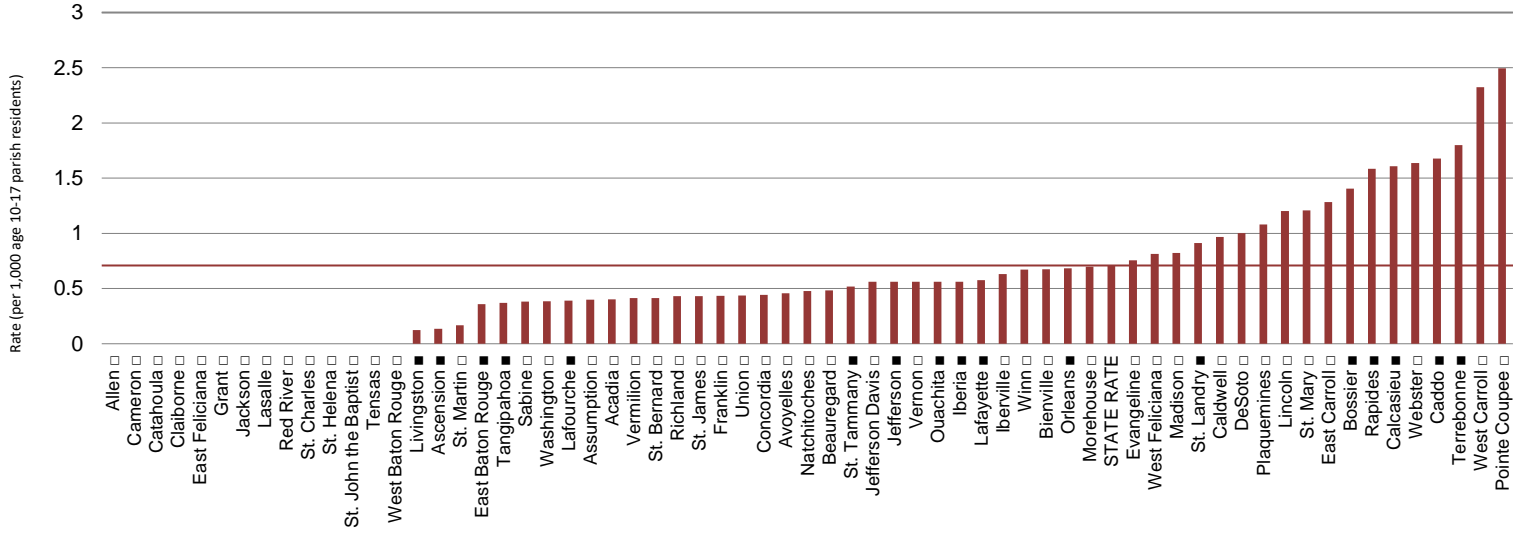


# Current Quarter: Parish Comparisons by Custody Type

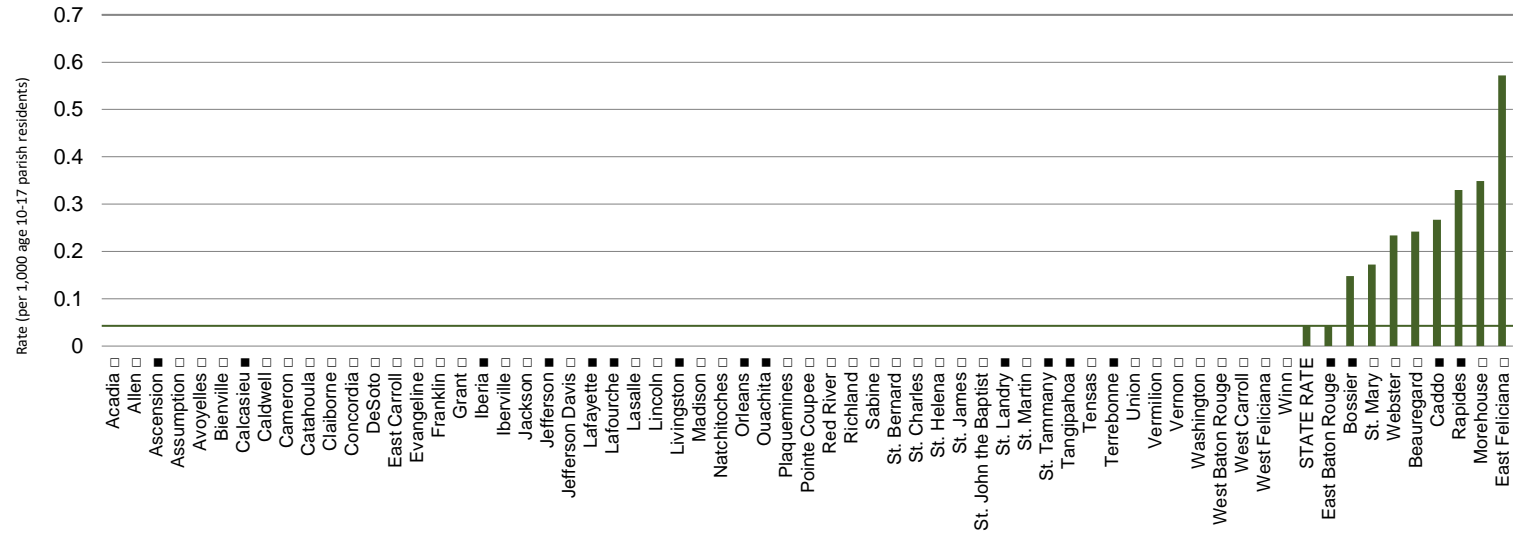
## SECURE DELINQUENT CUSTODY



## NON-SECURE DELINQUENT CUSTODY



## FINS CUSTODY



## Secure Delinquent Custody

**2020**  
**3rd Quarter**

	This Quarter		Last Quarter		This Quarter Last Year		This Qtr's variance from state rate -10   +10	12 Qtr Trend Number	Demographics			Variance from ttl parish rate	
	Number	Rate*	Number	Rate*	Number	Rate*			Female		African American	-10	+10
									Percent	Percent	Rate**		
State Total† ▶	313	0.64	311	0.63	362	0.74	-----		8%	83%	1.37		
Acadia □	4	0.53	4	0.53	4	0.53			0%	75%	1.81		
Allen □	1	0.39	0	0.00	0	0.00			0%	0%	0.00		
Ascension ■	1	0.07	0	0.00	3	0.20			0%	100%	0.26		
Assumption □	0	0.00	0	0.00	0	0.00			N/A	N/A	0.00		
Avoyelles □	0	0.00	0	0.00	3	0.69			N/A	N/A	0.00		
Beauregard □	1	0.24	2	0.48	1	0.24			0%	0%	0.00		
Bienville □	0	0.00	0	0.00	0	0.00			N/A	N/A	0.00		
Bossier ■	0	0.00	0	0.00	6	0.44			N/A	N/A	0.00		
Caddo ■	41	1.56	39	1.49	39	1.49			7%	88%	2.39		
Calcasieu ■	15	0.69	14	0.64	16	0.73			7%	87%	1.93		
Caldwell □	0	0.00	0	0.00	0	0.00			N/A	N/A	0.00		
Cameron □	0	0.00	0	0.00	0	0.00			N/A	N/A	0.00		
Catahoula □	0	0.00	0	0.00	0	0.00			N/A	N/A	0.00		
Claiborne □	0	0.00	0	0.00	0	0.00			N/A	N/A	0.00		
Concordia □	0	0.00	0	0.00	1	0.44			N/A	N/A	0.00		
De Soto □	4	1.34	4	1.34	3	1.00			0%	50%	1.61		
East Baton Rouge ■	43	0.96	41	0.92	55	1.23			7%	98%	1.59		
East Carroll □	1	1.28	1	1.28	1	1.28			0%	100%	1.73		
East Feliciana □	0	0.00	0	0.00	0	0.00			N/A	N/A	0.00		
Evangeline □	2	0.50	3	0.76	3	0.76			0%	100%	1.53		
Franklin □	1	0.43	1	0.43	5	2.17			0%	0%	0.00		
Grant □	0	0.00	0	0.00	1	0.45			N/A	N/A	0.00		
Iberia ■	6	0.68	5	0.56	6	0.68			0%	100%	1.74		
Iberville □	0	0.00	0	0.00	1	0.32			N/A	N/A	0.00		
Jackson □	2	1.25	2	1.25	2	1.25			0%	50%	2.06		
Jefferson ■	14	0.34	14	0.34	10	0.24			14%	100%	0.94		
Jefferson Davis □	4	1.12	4	1.12	4	1.12			0%	50%	2.68		
Lafayette ■	13	0.54	19	0.78	18	0.74			0%	69%	1.10		
Lafourche ■	4	0.39	4	0.39	5	0.49			0%	75%	1.66		
Lasalle □	0	0.00	0	0.00	0	0.00			N/A	N/A	0.00		
Lincoln □	1	0.24	1	0.24	1	0.24			0%	0%	0.00		
Livingston ■	1	0.06	2	0.12	1	0.06			0%	100%	0.78		
Madison □	4	3.29	3	2.47	4	3.29			0%	100%	4.53		
Morehouse □	1	0.35	2	0.70	3	1.05			100%	100%	0.60		
Natchitoches □	0	0.00	0	0.00	1	0.24			N/A	N/A	0.00		
Orleans ■	71	2.20	69	2.14	63	1.96			8%	97%	2.81		
Ouachita ■	10	0.56	9	0.51	11	0.62			20%	40%	0.49		
Plaquemines □	0	0.00	0	0.00	0	0.00			N/A	N/A	0.00		
Pointe Coupee □	4	1.66	4	1.66	3	1.25			0%	50%	1.99		
Rapides ■	7	0.46	7	0.46	8	0.53			14%	43%	0.51		
Red River □	0	0.00	0	0.00	0	0.00			N/A	N/A	0.00		
Richland □	4	1.73	5	2.16	3	1.29			0%	100%	4.08		
Sabine □	2	0.77	1	0.38	4	1.53			100%	100%	3.45		
St. Bernard □	5	1.04	4	0.83	4	0.83			20%	80%	2.65		
St. Charles □	2	0.32	1	0.16	0	0.00			50%	50%	0.54		
St. Helena □	0	0.00	0	0.00	0	0.00			N/A	N/A	0.00		
St. James □	0	0.00	0	0.00	0	0.00			N/A	N/A	0.00		
St. John the Baptist □	1	0.20	1	0.20	1	0.20			0%	100%	0.31		
St. Landry ■	8	0.81	9	0.91	9	0.91			25%	88%	1.48		
St. Martin □	0	0.00	0	0.00	0	0.00			N/A	N/A	0.00		
St. Mary □	1	0.17	1	0.17	3	0.52			0%	0%	0.00		
St. Tammany ■	9	0.31	9	0.31	10	0.34			0%	33%	0.66		
Tangipahoa ■	5	0.37	5	0.37	5	0.37			0%	100%	0.94		
Tensas □	1	1.73	0	0.00	0	0.00			0%	100%	2.67		
Terrebonne ■	5	0.39	4	0.31	8	0.63			0%	60%	0.99		
Union □	1	0.44	1	0.44	0	0.00			0%	0%	0.00		
Vermilion □	1	0.14	1	0.14	5	0.69			0%	100%	0.72		
Vernon □	2	0.37	3	0.56	2	0.37			0%	0%	0.00		
Washington □	1	0.19	1	0.19	1	0.19			0%	100%	0.52		
Webster □	0	0.00	0	0.00	2	0.47			N/A	N/A	0.00		
West Baton Rouge □	3	1.14	1	0.38	2	0.76			0%	100%	2.57		
West Carroll □	0	0.00	0	0.00	2	1.55			N/A	N/A	0.00		
West Feliciana □	0	0.00	0	0.00	0	0.00			N/A	N/A	0.00		
Winn □	0	0.00	0	0.00	2	1.34			N/A	N/A	0.00		

\* Per 1,000 age 10-17 parish residents based on yearly population estimates

\*\* Per 1,000 age 10-17 African American parish residents based on yearly population estimates

† Youth without a Parish designation and Out of State youth are included

**Non-Secure Delinquent Custody**

**2020  
3rd Quarter**

	This Quarter		Last Quarter		This Quarter Last Year		This Qtr's variance from state rate		12 Qtr Trend	Demographics			Variance from ttl parish rate		
	Number	Rate*	Number	Rate*	Number	Rate*	-10   +10			Female		African American	Rate**	-10   +10	
							Percent	Percent		Rate**	-10	+10			
State Total† ▶	358	0.73	366	0.75	381	0.78	-----			6%	77%	1.43			
Acadia □	3	0.40	1	0.13	5	0.67				0%	100%	1.81			
Allen □	0	0.00	0	0.00	0	0.00				N/A	N/A	0.00			
Ascension ■	2	0.14	4	0.27	2	0.14				0%	0%	0.00			
Assumption □	1	0.40	1	0.40	2	0.80				0%	100%	1.07			
Avoyelles □	2	0.46	2	0.46	10	2.29				50%	50%	0.68			
Beauregard □	2	0.48	2	0.48	4	0.97				0%	50%	1.60			
Bienville □	1	0.68	1	0.68	0	0.00				0%	100%	1.47			
Bossier ■	19	1.40	17	1.26	20	1.48				11%	89%	4.51			
Caddo ■	44	1.68	43	1.64	45	1.72				11%	89%	2.59			
Calcasieu ■	35	1.61	38	1.74	34	1.56				0%	71%	3.71			
Caldwell □	1	0.97	2	1.93	3	2.90				0%	0%	0.00			
Cameron □	0	0.00	0	0.00	0	0.00				N/A	N/A	0.00			
Catahoula □	0	0.00	0	0.00	0	0.00				N/A	N/A	0.00			
Claiborne □	0	0.00	0	0.00	0	0.00				N/A	N/A	0.00			
Concordia □	1	0.44	3	1.33	1	0.44				0%	100%	0.95			
De Soto □	3	1.00	4	1.34	5	1.67				0%	33%	0.81			
East Baton Rouge ■	16	0.36	21	0.47	25	0.56				0%	100%	0.61			
East Carroll □	1	1.28	0	0.00	0	0.00				0%	100%	1.73			
East Feliciana □	0	0.00	0	0.00	0	0.00				N/A	N/A	0.00			
Evangeline □	3	0.76	6	1.51	1	0.25				0%	67%	1.53			
Franklin □	1	0.43	1	0.43	0	0.00				0%	100%	1.10			
Grant □	0	0.00	0	0.00	0	0.00				N/A	N/A	0.00			
Iberia ■	5	0.56	6	0.68	6	0.68				0%	80%	1.16			
Iberville □	2	0.63	1	0.32	4	1.26				0%	50%	0.55			
Jackson □	0	0.00	0	0.00	0	0.00				N/A	N/A	0.00			
Jefferson ■	23	0.56	22	0.54	28	0.68				4%	70%	1.08			
Jefferson Davis □	2	0.56	3	0.84	0	0.00				0%	50%	1.34			
Lafayette ■	14	0.58	12	0.49	13	0.54				14%	64%	1.10			
Lafourche ■	4	0.39	3	0.29	8	0.78				0%	100%	2.21			
Lasalle □	0	0.00	0	0.00	1	0.65				N/A	N/A	0.00			
Lincoln □	5	1.20	6	1.44	3	0.72				0%	100%	2.68			
Livingston ■	2	0.12	2	0.12	2	0.12				50%	0%	0.00			
Madison □	1	0.82	1	0.82	0	0.00				0%	100%	1.13			
Morehouse □	2	0.70	1	0.35	1	0.35				0%	50%	0.60			
Natchitoches □	2	0.48	2	0.48	3	0.72				50%	100%	0.93			
Orleans ■	22	0.68	22	0.68	21	0.65				0%	95%	0.85			
Ouachita ■	10	0.56	10	0.56	13	0.73				10%	90%	1.11			
Plaquemines □	3	1.08	3	1.08	4	1.44				0%	33%	1.54			
Pointe Coupee □	6	2.50	6	2.50	3	1.25				0%	33%	1.99			
Rapides ■	24	1.58	29	1.92	14	0.92				8%	83%	3.43			
Red River □	0	0.00	1	1.10	3	3.31				N/A	N/A	0.00			
Richland □	1	0.43	0	0.00	1	0.43				0%	100%	1.02			
Sabine □	1	0.38	5	1.92	4	1.53				100%	100%	1.72			
St. Bernard □	2	0.41	2	0.41	0	0.00				50%	50%	0.66			
St. Charles □	0	0.00	1	0.16	3	0.48				N/A	N/A	0.00			
St. Helena □	0	0.00	0	0.00	0	0.00				N/A	N/A	0.00			
St. James □	1	0.43	1	0.43	1	0.43				0%	100%	0.79			
St. John the Baptist □	0	0.00	1	0.20	2	0.40				N/A	N/A	0.00			
St. Landry ■	9	0.91	6	0.61	13	1.32				0%	89%	1.69			
St. Martin □	1	0.17	1	0.17	1	0.17				0%	100%	0.46			
St. Mary □	7	1.21	4	0.69	6	1.03				0%	29%	0.94			
St. Tammany ■	15	0.52	12	0.41	7	0.24				7%	60%	1.98			
Tangipahoa ■	5	0.37	4	0.30	3	0.22				0%	60%	0.56			
Tensas □	0	0.00	1	1.73	1	1.73				N/A	N/A	0.00			
Terrebonne ■	23	1.80	26	2.03	24	1.88				0%	83%	6.25			
Union □	1	0.44	1	0.44	2	0.87				0%	100%	1.31			
Vermilion □	3	0.41	3	0.41	0	0.00				0%	0%	0.00			
Vernon □	3	0.56	0	0.00	1	0.19				0%	33%	1.02			
Washington □	2	0.39	0	0.00	2	0.39				0%	100%	1.05			
Webster □	7	1.64	8	1.87	6	1.40				14%	86%	3.41			
West Baton Rouge □	0	0.00	0	0.00	1	0.38				N/A	N/A	0.00			
West Carroll □	3	2.32	3	2.32	3	2.32				0%	67%	7.97			
West Feliciana □	1	0.81	0	0.00	0	0.00				0%	100%	2.40			
Winn □	1	0.67	1	0.67	1	0.67				0%	100%	1.98			

\* Per 1,000 age 10-17 parish residents based on yearly population estimates  
 \*\* Per 1,000 age 10-17 African American parish residents based on yearly population estimates  
 † Youth without a Parish designation and Out of State youth are included

FINS Custody															
2020 3rd Quarter	This Quarter		Last Quarter		This Quarter Last Year		This Qtr's variance from state rate	12 Qtr Trend	Demographics			Variance from ttl parish rate			
	Number	Rate*	Number	Rate*	Number	Rate*			Female		African American				
							Percent	Percent	Rate**						
							-10		+10	Number	Percent	Percent	Rate**	-10	
State Total† ▶	21	0.04	23	0.05	46	0.09	-----		62%	76%	0.08				
Acadia □	0	0.00	0	0.00	0	0.00			N/A	N/A	0.00				
Allen □	0	0.00	0	0.00	0	0.00			N/A	N/A	0.00				
Ascension ■	0	0.00	0	0.00	1	0.07			N/A	N/A	0.00				
Assumption □	0	0.00	0	0.00	0	0.00			N/A	N/A	0.00				
Avoyelles □	0	0.00	0	0.00	0	0.00			N/A	N/A	0.00				
Beauregard □	1	0.24	0	0.00	0	0.00			0%	100%	1.60				
Bienville □	0	0.00	0	0.00	0	0.00			N/A	N/A	0.00				
Bossier ■	2	0.15	0	0.00	1	0.07			100%	0%	0.00				
Caddo ■	7	0.27	10	0.38	4	0.15			71%	100%	0.46				
Calcasieu ■	0	0.00	1	0.05	4	0.18			N/A	N/A	0.00				
Caldwell □	0	0.00	0	0.00	0	0.00			N/A	N/A	0.00				
Cameron □	0	0.00	0	0.00	0	0.00			N/A	N/A	0.00				
Catahoula □	0	0.00	0	0.00	0	0.00			N/A	N/A	0.00				
Claiborne □	0	0.00	0	0.00	0	0.00			N/A	N/A	0.00				
Concordia □	0	0.00	0	0.00	0	0.00			N/A	N/A	0.00				
De Soto □	0	0.00	0	0.00	1	0.33			N/A	N/A	0.00				
East Baton Rouge ■	2	0.04	3	0.07	11	0.25			100%	100%	0.08				
East Carroll □	0	0.00	0	0.00	0	0.00			N/A	N/A	0.00				
East Feliciana □	1	0.57	0	0.00	1	0.57			100%	100%	1.18				
Evangeline □	0	0.00	0	0.00	0	0.00			N/A	N/A	0.00				
Franklin □	0	0.00	0	0.00	0	0.00			N/A	N/A	0.00				
Grant □	0	0.00	0	0.00	0	0.00			N/A	N/A	0.00				
Iberia ■	0	0.00	0	0.00	1	0.11			N/A	N/A	0.00				
Iberville □	0	0.00	0	0.00	0	0.00			N/A	N/A	0.00				
Jackson □	0	0.00	0	0.00	0	0.00			N/A	N/A	0.00				
Jefferson ■	0	0.00	0	0.00	0	0.00			N/A	N/A	0.00				
Jefferson Davis □	0	0.00	0	0.00	0	0.00			N/A	N/A	0.00				
Lafayette ■	0	0.00	0	0.00	1	0.04			N/A	N/A	0.00				
Lafourche ■	0	0.00	0	0.00	2	0.20			N/A	N/A	0.00				
Lasalle □	0	0.00	0	0.00	0	0.00			N/A	N/A	0.00				
Lincoln □	0	0.00	0	0.00	0	0.00			N/A	N/A	0.00				
Livingston ■	0	0.00	0	0.00	1	0.06			N/A	N/A	0.00				
Madison □	0	0.00	0	0.00	0	0.00			N/A	N/A	0.00				
Morehouse □	1	0.35	1	0.35	1	0.35			0%	100%	0.60				
Natchitoches □	0	0.00	0	0.00	0	0.00			N/A	N/A	0.00				
Orleans ■	0	0.00	0	0.00	1	0.03			N/A	N/A	0.00				
Ouachita ■	0	0.00	0	0.00	0	0.00			N/A	N/A	0.00				
Plaquemines □	0	0.00	0	0.00	0	0.00			N/A	N/A	0.00				
Pointe Coupee □	0	0.00	0	0.00	0	0.00			N/A	N/A	0.00				
Rapides ■	5	0.33	6	0.40	7	0.46			60%	80%	0.69				
Red River □	0	0.00	0	0.00	0	0.00			N/A	N/A	0.00				
Richland □	0	0.00	0	0.00	0	0.00			N/A	N/A	0.00				
Sabine □	0	0.00	0	0.00	0	0.00			N/A	N/A	0.00				
St. Bernard □	0	0.00	0	0.00	0	0.00			N/A	N/A	0.00				
St. Charles □	0	0.00	0	0.00	0	0.00			N/A	N/A	0.00				
St. Helena □	0	0.00	0	0.00	0	0.00			N/A	N/A	0.00				
St. James □	0	0.00	0	0.00	0	0.00			N/A	N/A	0.00				
St. John the Baptist □	0	0.00	0	0.00	0	0.00			N/A	N/A	0.00				
St. Landry ■	0	0.00	0	0.00	1	0.10			N/A	N/A	0.00				
St. Martin □	0	0.00	0	0.00	0	0.00			N/A	N/A	0.00				
St. Mary □	1	0.17	1	0.17	5	0.86			0%	0%	0.00				
St. Tammany ■	0	0.00	0	0.00	0	0.00			N/A	N/A	0.00				
Tangipahoa ■	0	0.00	0	0.00	0	0.00			N/A	N/A	0.00				
Tensas □	0	0.00	0	0.00	0	0.00			N/A	N/A	0.00				
Terrebonne ■	0	0.00	0	0.00	1	0.08			N/A	N/A	0.00				
Union □	0	0.00	0	0.00	0	0.00			N/A	N/A	0.00				
Vermilion □	0	0.00	0	0.00	0	0.00			N/A	N/A	0.00				
Vernon □	0	0.00	0	0.00	0	0.00			N/A	N/A	0.00				
Washington □	0	0.00	0	0.00	0	0.00			N/A	N/A	0.00				
Webster □	1	0.23	1	0.23	1	0.23			0%	0%	0.00				
West Baton Rouge □	0	0.00	0	0.00	1	0.38			N/A	N/A	0.00				
West Carroll □	0	0.00	0	0.00	0	0.00			N/A	N/A	0.00				
West Feliciana □	0	0.00	0	0.00	0	0.00			N/A	N/A	0.00				
Winn □	0	0.00	0	0.00	0	0.00			N/A	N/A	0.00				

\* Per 1,000 age 10-17 parish residents based on yearly population estimates

\*\* Per 1,000 age 10-17 African American parish residents based on yearly population estimates

† Youth without a Parish designation and Out of State youth are included