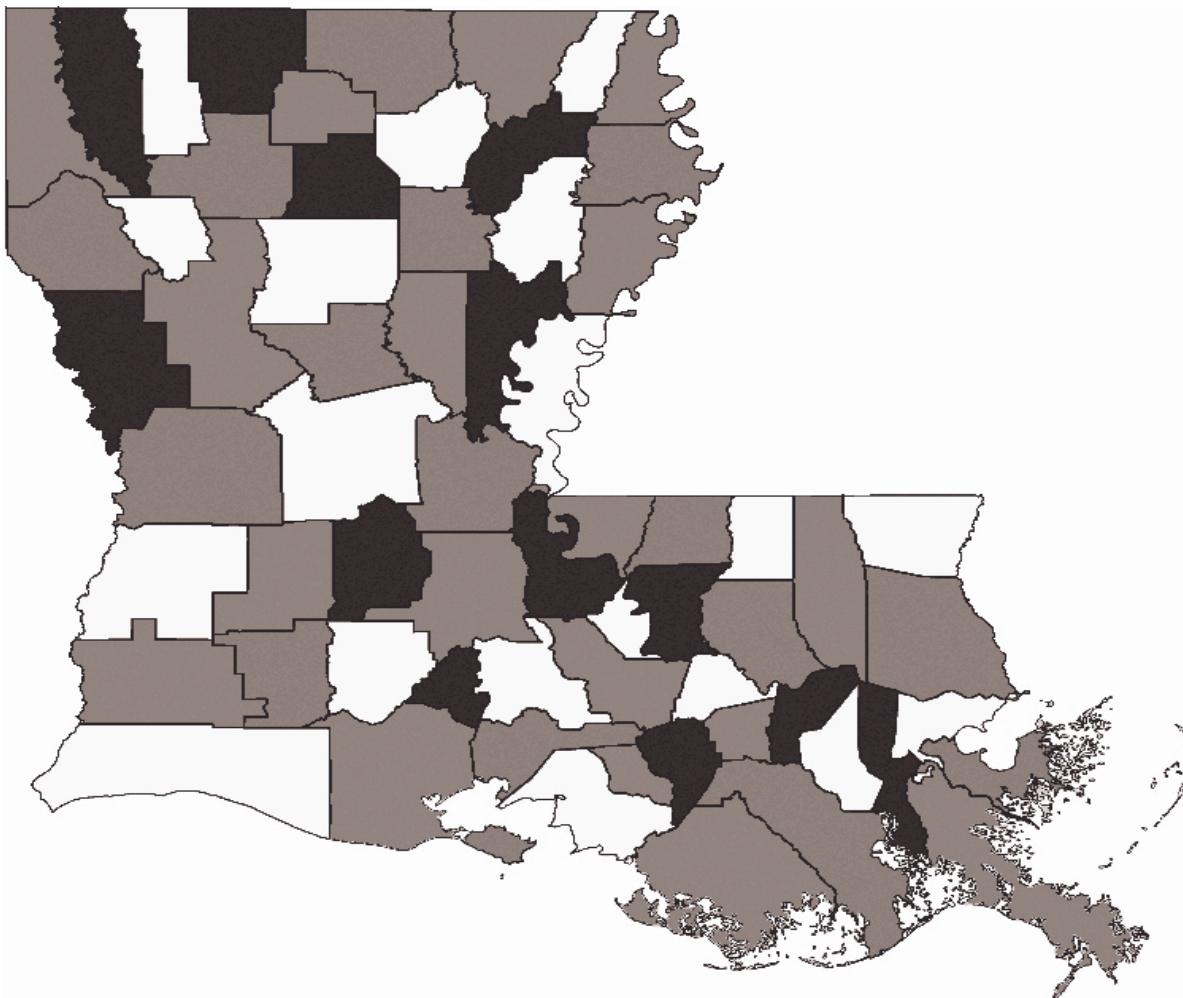


Louisiana Quarterly Juvenile Justice Indicators

An up-to-date view of juvenile custody
and supervision populations



- Acadia
- Allen
- Ascension
- Assumption
- Avoyelles
- Beauregard
- Bienville
- Bossier
- Caddo
- Calcasieu
- Caldwell
- Cameron
- Catahoula
- Claiborne
- Concordia
- De Soto
- East Baton Rouge
- East Carroll
- East Feliciana
- Evangeline
- Franklin
- Grant
- Iberia
- Iberville
- Jackson
- Jefferson
- Jefferson Davis
- Lafayette
- Lafourche
- Lasalle
- Lincoln
- Livingston
- Madison
- Morehouse
- Natchitoches
- Orleans
- Ouachita
- Plaquemines
- Pointe Coupee
- Rapides
- Red River
- Richland
- Sabine
- St. Bernard
- St. Charles
- St. Helena
- St. James
- St. John the Baptist
- St. Landry
- St. Martin
- St. Mary
- St. Tammany
- Tangipahoa
- Tensas
- Terrebonne
- Union
- Vermilion
- Vernon
- Washington
- Webster
- West Baton Rouge
- West Carroll
- West Feliciana
- Winn



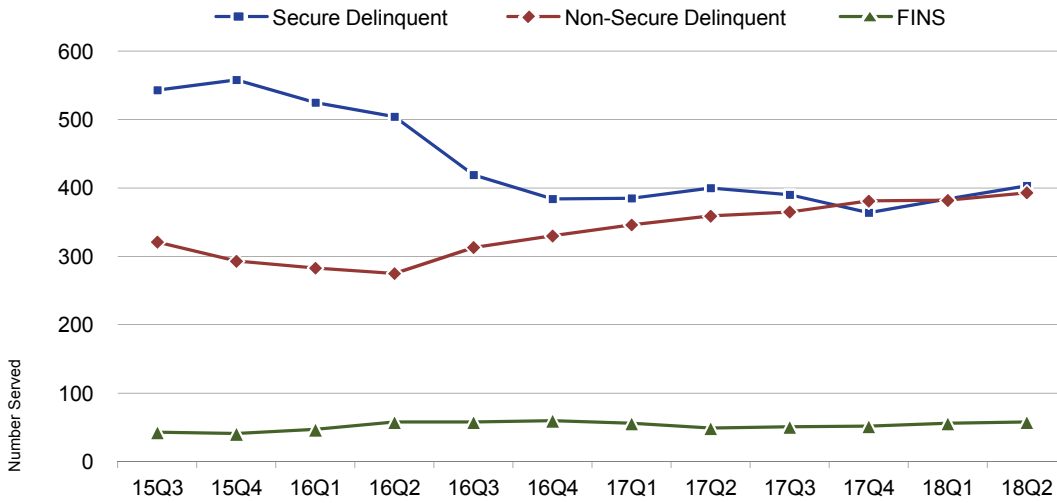
In Louisiana, juvenile sentencing practices can vary widely from parish to parish and are subject to change over time. The following report, issued quarterly, is designed to offer an up-to-date view of juvenile custody and supervision populations, both statewide and for all sixty-four parishes. For further background on data definitions, sources, and interpreting the document, please see the accompanying guide

It is our hope that monitoring these reports will help stakeholders at every level follow trends, inform planning, and identify areas in need of further investigation. The following observations are provided as examples to stimulate stakeholders to examine the data themselves with an eye toward local needs and concerns:

- During the second quarter of 2018 there were 403 youth served in a secure custody legal status, 393 non-secure custody, and 58 FINS custody statewide.
- Statewide, about 0.82 youth per thousand had a secure delinquent status; less than 0.81 per thousand had a non-secure delinquent status.
- African American youth are disproportionately represented in every custody and supervision status.
- Custody rates by parish widely diverge, with larger parishes distributed across the spectrum.

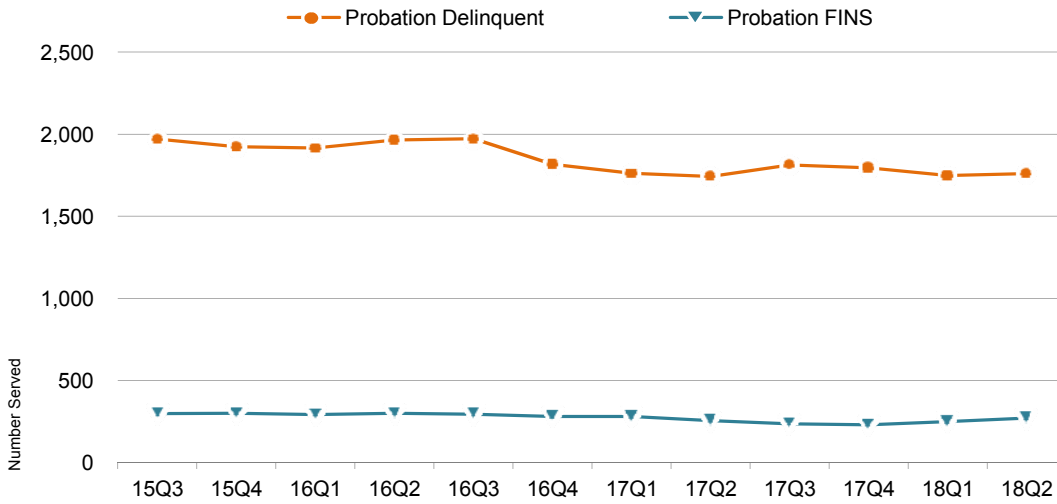
Quarterly Statewide Trends: Youth Served

CUSTODY TYPE



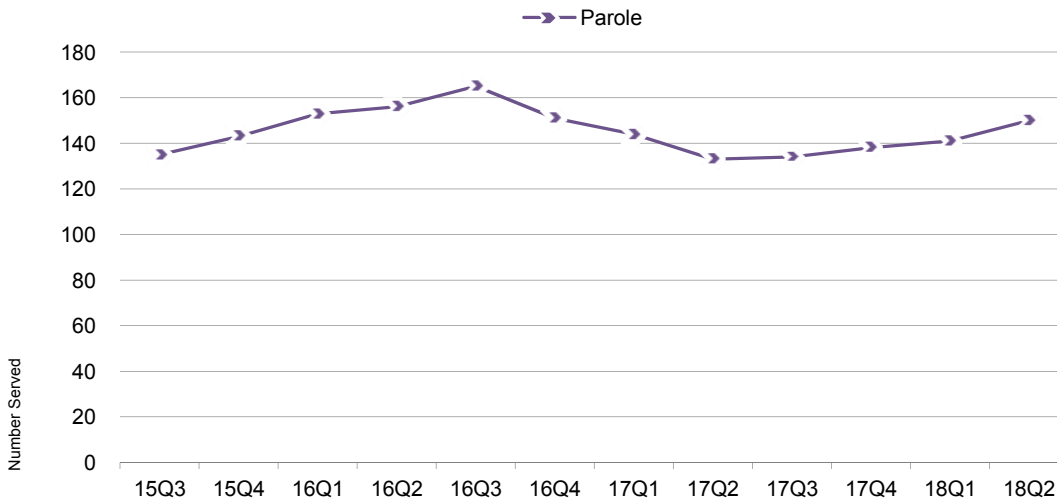
	Youth Served		
	this quarter	last qtr	2 yrs ago
Secure	403	4.9%	-20.0%
Non-Sec.	393	2.9%	42.9%
FINS	58	3.6%	0.0%

PROBATION (Delinquent and FINS, not including local)



	Youth Served		
	this quarter	last qtr	2 yrs ago
P. Delinq.	1,760	0.7%	-10.4%
P. FINS	270	8.4%	-9.7%

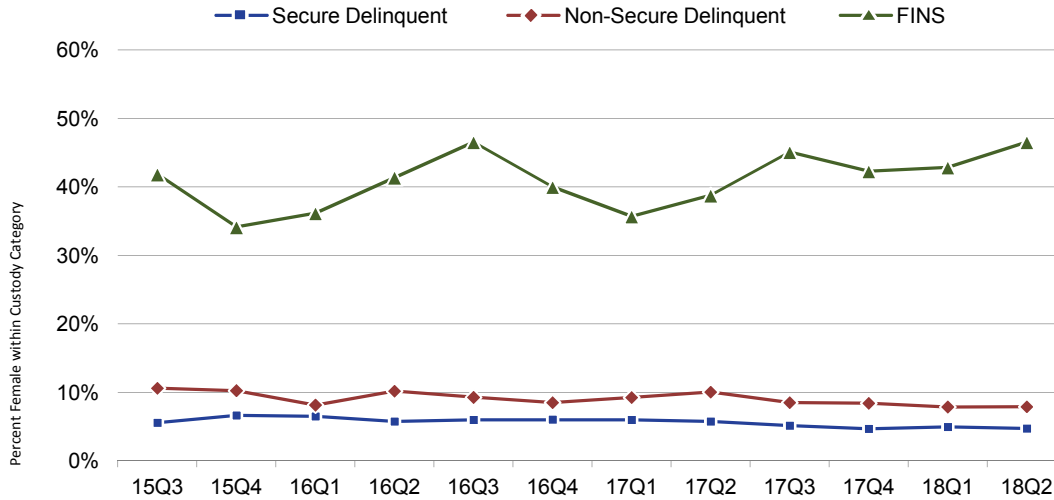
PAROLE



	Youth Served		
	this quarter	last qtr	2 yrs ago
Parole	150	6.4%	-3.8%

Quarterly Statewide Trends: Youth Served

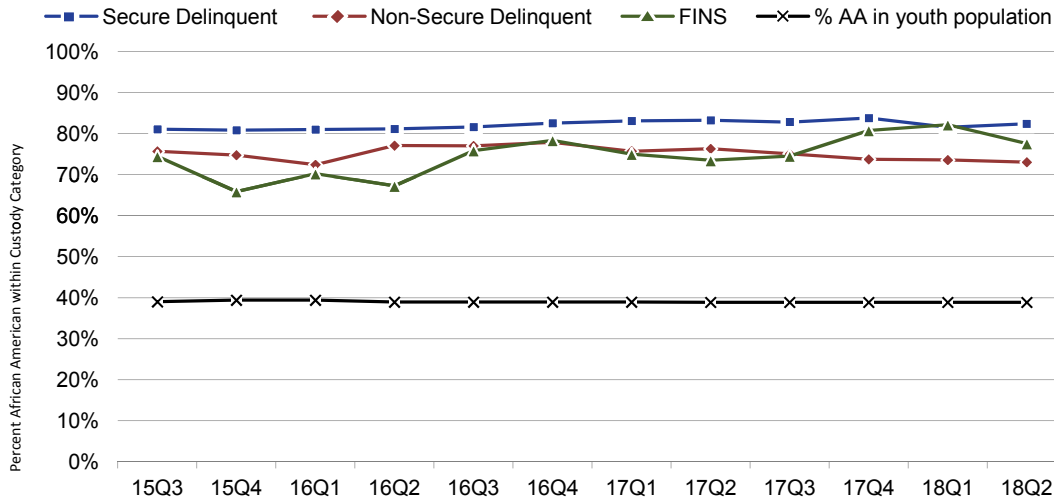
CUSTODY TYPE BY % FEMALE



Youth Served: Female

	this quarter	% change from	
		last qtr	2 yrs ago
Secure	19	0.0%	-34.5%
Non-Sec.	31	3.3%	10.7%
FINS	27	12.5%	12.5%
Youth Served: Male			
Secure	384	5.2%	-19.2%
Non-Sec.	362	2.8%	46.6%
FINS	31	-3.1%	-8.8%

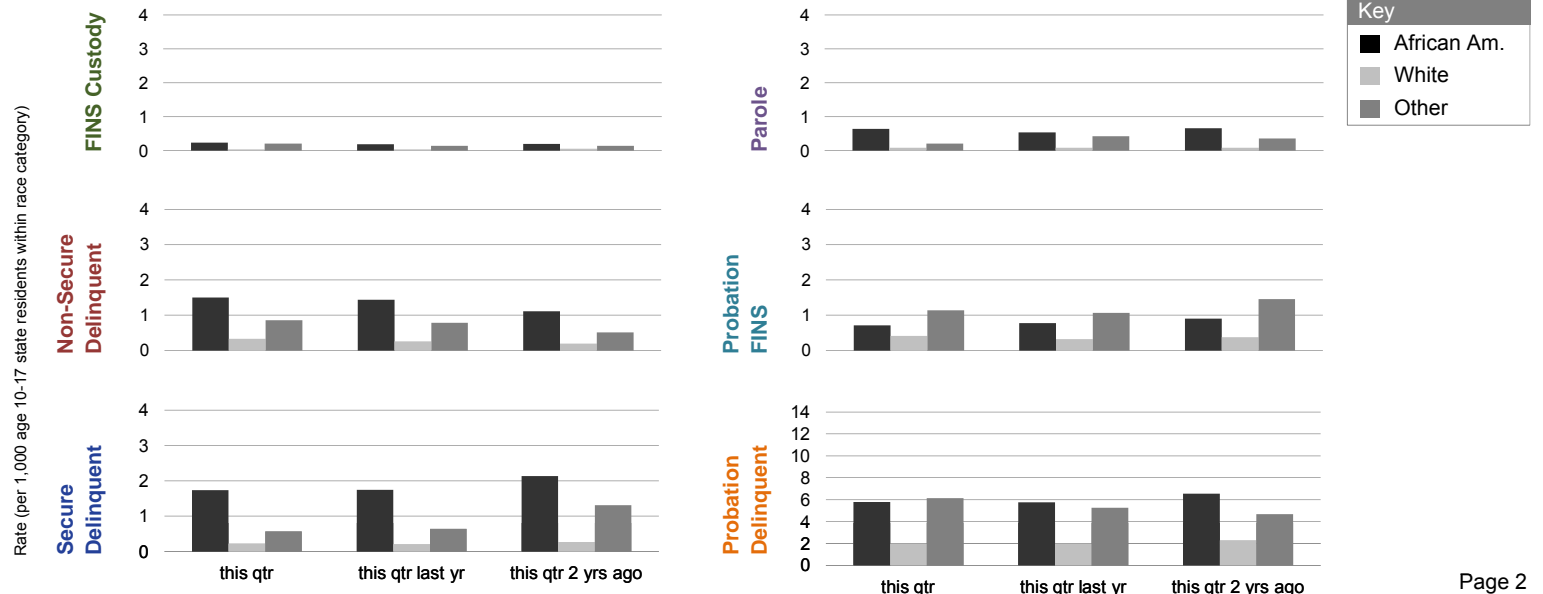
CUSTODY TYPE BY % AFRICAN AMERICAN



Youth Served: African American

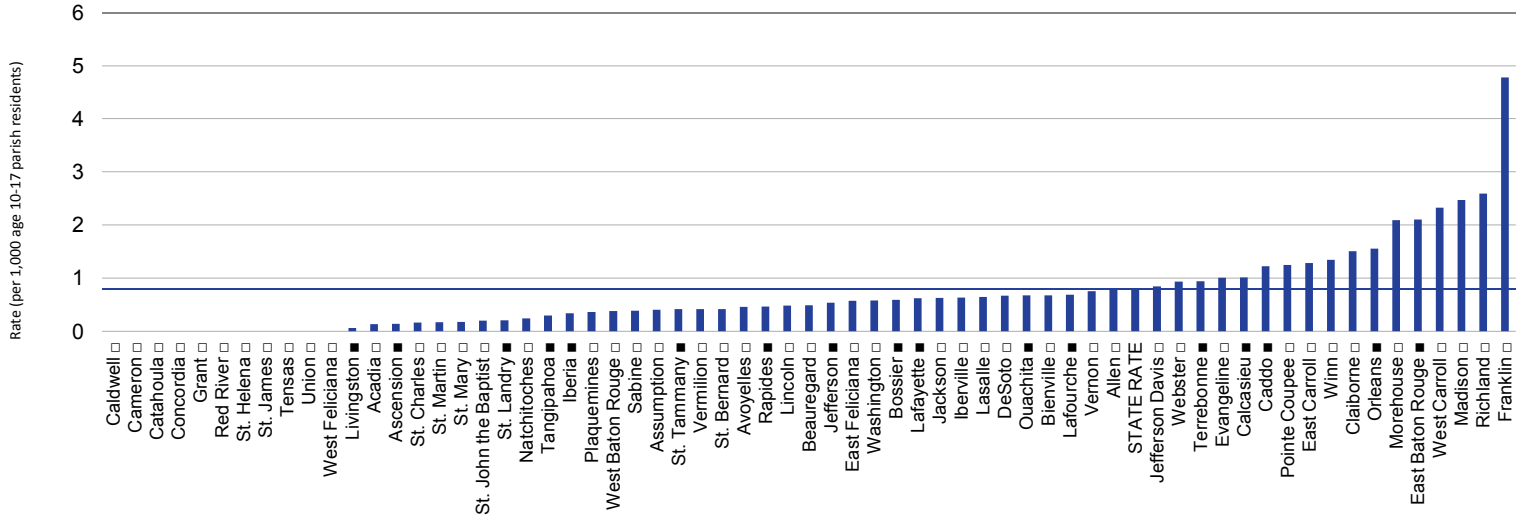
	this quarter	% change from	
		last qtr	2 yrs ago
Secure	332	6.1%	-18.8%
Non-Sec.	287	2.1%	35.4%
FINS	45	-2.2%	15.4%
Youth Served: White			
Secure	63	-1.6%	-18.2%
Non-Sec.	94	5.6%	67.9%
FINS	10	0.0%	-41.2%
Youth Served: Other			
Secure	8	14.3%	-55.6%
Non-Sec.	12	0.0%	71.4%
FINS	3	#DIV/0!	50%

CUSTODY TYPE, PROBATION, AND PAROLE RATES BY RACE

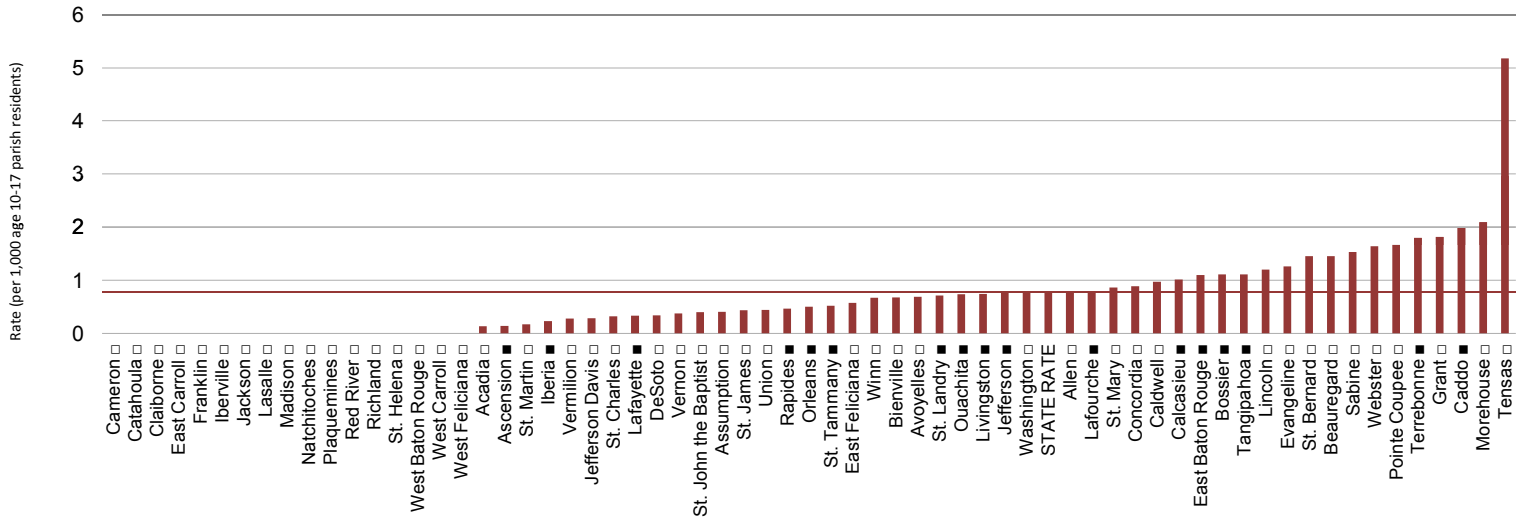


Current Quarter: Parish Comparisons by Custody Type

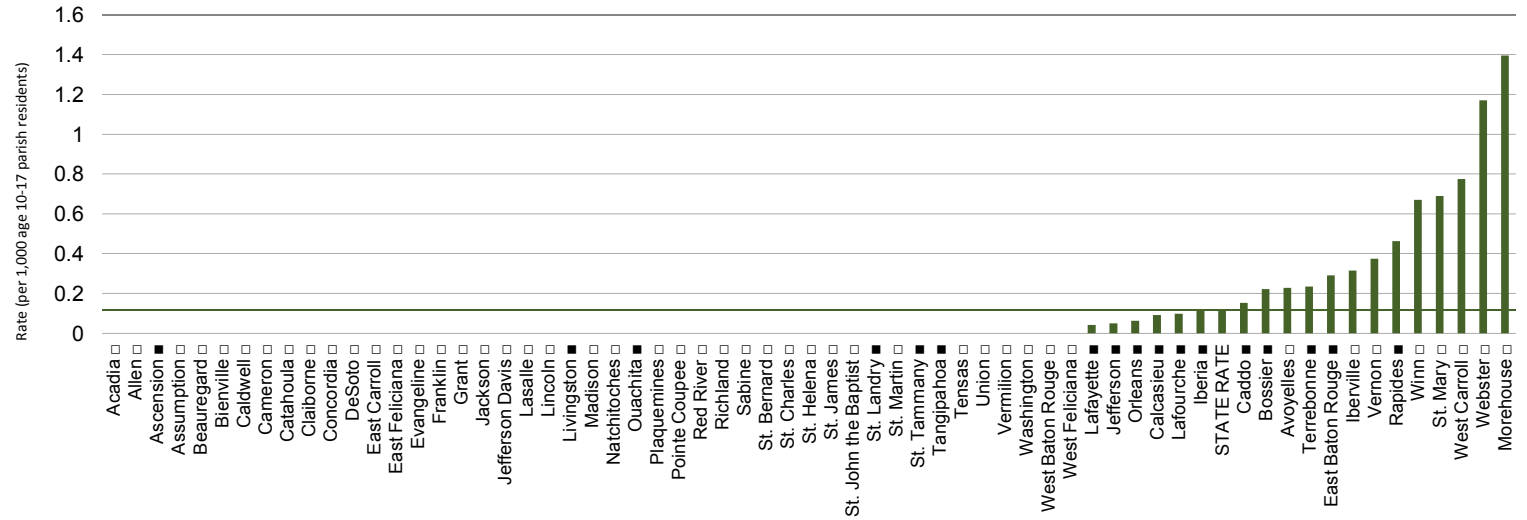
SECURE DELINQUENT CUSTODY



NON-SECURE DELINQUENT CUSTODY



FINS CUSTODY



Secure Delinquent Custody

2018
2nd Quarter

	This Quarter		Last Quarter		This Quarter Last Year		This Qtr's variance from state rate	12 Qtr Trend	Demographics			Variance from tll parish rate		
	Number	Rate*	Number	Rate*	Number	Rate*			Female		African American		-10	+10
									Percent	Percent	Rate**			
State Total† ▶	403	0.82	384	0.78	400	0.81	-----		5%	82%	1.74			
Acadia □	1	0.13	1	0.13	1	0.13			0%	0%	0.00			
Allen □	2	0.78	2	0.78	2	0.78			0%	0%	0.00			
Ascension ■	2	0.14	4	0.27	3	0.20			0%	0%	0.00			
Assumption □	1	0.40	1	0.40	0	0.00			0%	100%	1.07			
Avoyelles □	2	0.46	2	0.46	3	0.69			0%	50%	0.68			
Beauregard □	2	0.48	3	0.73	2	0.48			50%	50%	1.60			
Bienville □	1	0.68	2	1.35	3	2.03			0%	100%	1.47			
Bossier ■	8	0.59	7	0.52	8	0.59			0%	63%	1.33			
Caddo ■	32	1.22	35	1.34	40	1.53			3%	94%	1.99			
Calcasieu ■	22	1.01	19	0.87	18	0.83			0%	91%	2.97			
Caldwell □	0	0.00	0	0.00	0	0.00			N/A	N/A	0.00			
Cameron □	0	0.00	0	0.00	0	0.00			N/A	N/A	0.00			
Catahoula □	0	0.00	0	0.00	0	0.00			N/A	N/A	0.00			
Claiborne □	2	1.51	2	1.51	2	1.51			0%	100%	2.75			
Concordia □	0	0.00	0	0.00	1	0.44			N/A	N/A	0.00			
De Soto □	2	0.67	2	0.67	2	0.67			0%	50%	0.81			
East Baton Rouge ■	94	2.10	81	1.81	78	1.74			6%	96%	3.40			
East Carroll □	1	1.28	0	0.00	2	2.56			0%	100%	1.73			
East Feliciana □	1	0.57	1	0.57	1	0.57			100%	100%	1.18			
Evangeline □	4	1.01	6	1.51	5	1.26			0%	100%	3.06			
Franklin □	11	4.78	10	4.35	5	2.17			9%	91%	10.95			
Grant □	0	0.00	0	0.00	0	0.00			N/A	N/A	0.00			
Iberia ■	3	0.34	4	0.45	4	0.45			33%	67%	0.58			
Iberville □	2	0.63	2	0.63	2	0.63			0%	100%	1.10			
Jackson □	1	0.62	1	0.62	0	0.00			0%	0%	0.00			
Jefferson ■	22	0.54	20	0.49	19	0.46			0%	86%	1.28			
Jefferson Davis □	3	0.84	2	0.56	2	0.56			0%	33%	1.34			
Lafayette ■	15	0.62	12	0.49	15	0.62			7%	93%	1.71			
Lafourche ■	7	0.68	6	0.59	5	0.49			14%	57%	2.21			
Lasalle □	1	0.65	1	0.65	0	0.00			0%	0%	0.00			
Lincoln □	2	0.48	2	0.48	2	0.48			0%	100%	1.07			
Livingston ■	1	0.06	2	0.12	7	0.43			0%	0%	0.00			
Madison □	3	2.47	3	2.47	5	4.12			0%	100%	3.40			
Morehouse □	6	2.09	6	2.09	6	2.09			0%	83%	3.00			
Natchitoches □	1	0.24	1	0.24	0	0.00			0%	100%	0.47			
Orleans ■	50	1.55	45	1.40	38	1.18			2%	92%	1.87			
Ouachita ■	12	0.67	13	0.73	10	0.56			17%	67%	0.98			
Plaquemines □	1	0.36	1	0.36	2	0.72			0%	100%	1.54			
Pointe Coupee □	3	1.25	2	0.83	2	0.83			0%	33%	1.00			
Rapides ■	7	0.46	3	0.20	9	0.59			0%	71%	0.86			
Red River □	0	0.00	0	0.00	0	0.00			N/A	N/A	0.00			
Richland □	6	2.59	8	3.45	8	3.45			0%	100%	6.12			
Sabine □	1	0.38	1	0.38	2	0.77			0%	0%	0.00			
St. Bernard □	2	0.41	2	0.41	1	0.21			50%	100%	1.32			
St. Charles □	1	0.16	1	0.16	4	0.63			0%	100%	0.54			
St. Helena □	0	0.00	0	0.00	0	0.00			N/A	N/A	0.00			
St. James □	0	0.00	0	0.00	0	0.00			N/A	N/A	0.00			
St. John the Baptist □	1	0.20	0	0.00	0	0.00			0%	0%	0.00			
St. Landry ■	2	0.20	1	0.10	3	0.30			0%	100%	0.42			
St. Martin □	1	0.17	1	0.17	0	0.00			0%	0%	0.00			
St. Mary □	1	0.17	1	0.17	1	0.17			0%	0%	0.00			
St. Tammany ■	12	0.41	13	0.45	11	0.38			0%	42%	1.10			
Tangipahoa ■	4	0.30	4	0.30	6	0.44			0%	100%	0.75			
Tensas □	0	0.00	0	0.00	1	1.73			N/A	N/A	0.00			
Terrebonne ■	12	0.94	13	1.02	18	1.41			8%	83%	3.29			
Union □	0	0.00	0	0.00	1	0.44			N/A	N/A	0.00			
Vermilion □	3	0.41	3	0.41	6	0.83			0%	67%	1.44			
Vernon □	4	0.75	5	0.94	4	0.75			0%	25%	1.02			
Washington □	3	0.58	3	0.58	3	0.58			0%	100%	1.57			
Webster □	4	0.94	4	0.94	6	1.40			0%	50%	1.14			
West Baton Rouge □	1	0.38	1	0.38	0	0.00			0%	100%	0.86			
West Carroll □	3	2.32	3	2.32	2	1.55			0%	67%	7.97			
West Feliciana □	0	0.00	0	0.00	0	0.00			N/A	N/A	0.00			
Winn □	2	1.34	2	1.34	0	0.00			50%	50%	1.98			

* Per 1,000 age 10-17 parish residents based on yearly population estimates

** Per 1,000 age 10-17 African American parish residents based on yearly population estimates

† Youth without a Parish designation and Out of State youth are included

Non-Secure Delinquent Custody

2018
2nd Quarter

	This Quarter		Last Quarter		This Quarter Last Year		This Qtr's variance from state rate		12 Qtr Trend	Demographics			Variance from tll parish rate	
	Number	Rate*	Number	Rate*	Number	Rate*	-10	+10		Female		African American	-10	+10
									Percent	Percent	Rate**			
State Total† ►	393	0.80	382	0.78	359	0.73	-----			8%	73%	1.50		
Acadia □	1	0.13	1	0.13	0	0.00				0%	0%	0.00		
Allen □	2	0.78	3	1.17	4	1.56				50%	0%	0.00		
Ascension ■	2	0.14	3	0.20	3	0.20				0%	100%	0.51		
Assumption □	1	0.40	0	0.00	0	0.00				0%	100%	1.07		
Avoyelles □	3	0.69	1	0.23	0	0.00				0%	100%	2.03		
Beauregard □	6	1.45	6	1.45	2	0.48				17%	50%	4.80		
Bienville □	1	0.68	1	0.68	0	0.00				0%	100%	1.47		
Bossier ■	15	1.11	18	1.33	17	1.26				7%	60%	2.39		
Caddo ■	52	1.98	56	2.14	38	1.45				8%	83%	2.85		
Calcasieu ■	22	1.01	22	1.01	18	0.83				5%	73%	2.37		
Caldwell □	1	0.97	1	0.97	0	0.00				0%	0%	0.00		
Cameron □	0	0.00	0	0.00	0	0.00				N/A	N/A	0.00		
Catahoula □	0	0.00	0	0.00	0	0.00				N/A	N/A	0.00		
Claiborne □	0	0.00	0	0.00	1	0.75				N/A	N/A	0.00		
Concordia □	2	0.89	3	1.33	2	0.89				0%	50%	0.95		
De Soto □	1	0.33	0	0.00	2	0.67				0%	100%	0.81		
East Baton Rouge ■	49	1.10	55	1.23	56	1.25				4%	98%	1.82		
East Carroll □	0	0.00	0	0.00	1	1.28				N/A	N/A	0.00		
East Feliciana □	1	0.57	2	1.14	3	1.72				0%	100%	1.18		
Evangeline □	5	1.26	2	0.50	9	2.27				20%	100%	3.82		
Franklin □	0	0.00	0	0.00	0	0.00				N/A	N/A	0.00		
Grant □	4	1.81	4	1.81	0	0.00				0%	0%	0.00		
Iberia ■	2	0.23	2	0.23	4	0.45				0%	100%	0.58		
Iberville □	0	0.00	2	0.63	3	0.95				N/A	N/A	0.00		
Jackson □	0	0.00	0	0.00	1	0.62				N/A	N/A	0.00		
Jefferson ■	31	0.76	24	0.59	23	0.56				13%	77%	1.62		
Jefferson Davis □	1	0.28	3	0.84	3	0.84				0%	0%	0.00		
Lafayette ■	8	0.33	11	0.45	8	0.33				13%	88%	0.86		
Lafourche ■	8	0.78	5	0.49	9	0.88				13%	50%	2.21		
Lasalle □	0	0.00	0	0.00	0	0.00				N/A	N/A	0.00		
Lincoln □	5	1.20	3	0.72	7	1.68				0%	80%	2.14		
Livingston ■	12	0.74	12	0.74	4	0.25				0%	8%	0.78		
Madison □	0	0.00	0	0.00	1	0.82				N/A	N/A	0.00		
Morehouse □	6	2.09	6	2.09	6	2.09				17%	100%	3.60		
Natchitoches □	0	0.00	0	0.00	4	0.96				N/A	N/A	0.00		
Orleans ■	16	0.50	13	0.40	12	0.37				25%	94%	0.61		
Ouachita ■	13	0.73	11	0.62	7	0.39				15%	85%	1.35		
Plaquemines □	0	0.00	1	0.36	2	0.72				N/A	N/A	0.00		
Pointe Coupee □	4	1.66	5	2.08	3	1.25				0%	50%	1.99		
Rapides ■	7	0.46	12	0.79	7	0.46				0%	100%	1.20		
Red River □	0	0.00	0	0.00	1	1.10				N/A	N/A	0.00		
Richland □	0	0.00	0	0.00	1	0.43				N/A	N/A	0.00		
Sabine □	4	1.53	2	0.77	1	0.38				0%	25%	1.72		
St. Bernard □	7	1.45	5	1.04	4	0.83				0%	86%	3.97		
St. Charles □	2	0.32	3	0.48	3	0.48				0%	50%	0.54		
St. Helena □	0	0.00	0	0.00	0	0.00				N/A	N/A	0.00		
St. James □	1	0.43	0	0.00	0	0.00				100%	100%	0.79		
St. John the Baptist □	2	0.40	0	0.00	0	0.00				0%	50%	0.31		
St. Landry ■	7	0.71	9	0.91	11	1.11				0%	86%	1.27		
St. Martin □	1	0.17	2	0.34	2	0.34				0%	100%	0.46		
St. Mary □	5	0.86	4	0.69	5	0.86				0%	40%	0.94		
St. Tammany ■	15	0.52	17	0.59	14	0.48				20%	47%	1.54		
Tangipahoa ■	15	1.11	8	0.59	3	0.22				7%	87%	2.44		
Tensas □	3	5.18	3	5.18	1	1.73				0%	67%	5.35		
Terrebonne ■	23	1.80	20	1.56	17	1.33				4%	61%	4.61		
Union □	1	0.44	1	0.44	0	0.00				0%	100%	1.31		
Vermilion □	2	0.28	2	0.28	2	0.28				0%	50%	0.72		
Vernon □	2	0.37	1	0.19	1	0.19				0%	0%	0.00		
Washington □	4	0.77	0	0.00	6	1.16				0%	100%	2.09		
Webster □	7	1.64	9	2.11	15	3.51				14%	14%	0.57		
West Baton Rouge □	0	0.00	0	0.00	1	0.38				N/A	N/A	0.00		
West Carroll □	0	0.00	0	0.00	0	0.00				N/A	N/A	0.00		
West Feliciana □	0	0.00	0	0.00	0	0.00				N/A	N/A	0.00		
Winn □	1	0.67	0	0.00	2	1.34				0%	100%	1.98		

* Per 1,000 age 10-17 parish residents based on yearly population estimates

** Per 1,000 age 10-17 African American parish residents based on yearly population estimates

† Youth without a Parish designation and Out of State youth are included

FINS Custody

**2018
2nd Quarter**

	This Quarter		Last Quarter		This Quarter Last Year		This Qtr's variance from state rate	12 Qtr Trend	Demographics			Variance from tll parish rate		
	Number	Rate*	Number	Rate*	Number	Rate*			-10		+10	Female	African American	
												Percent	Percent	Rate**
State Total† ▶	58	0.12	56	0.11	49	0.10	-----		47%	78%	0.24			
Acadia □	0	0.00	0	0.00	0	0.00			N/A	N/A	0.00			
Allen □	0	0.00	0	0.00	0	0.00			N/A	N/A	0.00			
Ascension ■	0	0.00	0	0.00	1	0.07			N/A	N/A	0.00			
Assumption □	0	0.00	0	0.00	0	0.00			N/A	N/A	0.00			
Avoyelles □	1	0.23	1	0.23	1	0.23			100%	100%	0.68			
Beauregard □	0	0.00	0	0.00	0	0.00			N/A	N/A	0.00			
Bienville □	0	0.00	0	0.00	0	0.00			N/A	N/A	0.00			
Bossier ■	3	0.22	1	0.07	0	0.00			100%	0%	0.00			
Caddo ■	4	0.15	5	0.19	6	0.23			0%	100%	0.27			
Calcasieu ■	2	0.09	0	0.00	2	0.09			100%	50%	0.15			
Caldwell □	0	0.00	0	0.00	0	0.00			N/A	N/A	0.00			
Cameron □	0	0.00	0	0.00	0	0.00			N/A	N/A	0.00			
Catahoula □	0	0.00	0	0.00	0	0.00			N/A	N/A	0.00			
Claiborne □	0	0.00	0	0.00	0	0.00			N/A	N/A	0.00			
Concordia □	0	0.00	0	0.00	1	0.44			N/A	N/A	0.00			
De Soto □	0	0.00	0	0.00	0	0.00			N/A	N/A	0.00			
East Baton Rouge ■	13	0.29	16	0.36	8	0.18			69%	100%	0.49			
East Carroll □	0	0.00	0	0.00	0	0.00			N/A	N/A	0.00			
East Feliciana □	0	0.00	0	0.00	1	0.57			N/A	N/A	0.00			
Evangeline □	0	0.00	0	0.00	0	0.00			N/A	N/A	0.00			
Franklin □	0	0.00	0	0.00	0	0.00			N/A	N/A	0.00			
Grant □	0	0.00	0	0.00	0	0.00			N/A	N/A	0.00			
Iberia ■	1	0.11	1	0.11	4	0.45			0%	0%	0.00			
Iberville □	1	0.32	0	0.00	0	0.00			100%	100%	0.55			
Jackson □	0	0.00	0	0.00	0	0.00			N/A	N/A	0.00			
Jefferson ■	2	0.05	2	0.05	3	0.07			0%	50%	0.07			
Jefferson Davis □	0	0.00	0	0.00	0	0.00			N/A	N/A	0.00			
Lafayette ■	1	0.04	1	0.04	2	0.08			0%	0%	0.00			
Lafourche ■	1	0.10	1	0.10	1	0.10			0%	100%	0.55			
Lasalle □	0	0.00	0	0.00	0	0.00			N/A	N/A	0.00			
Lincoln □	0	0.00	0	0.00	0	0.00			N/A	N/A	0.00			
Livingston ■	0	0.00	1	0.06	0	0.00			N/A	N/A	0.00			
Madison □	0	0.00	0	0.00	0	0.00			N/A	N/A	0.00			
Morehouse □	4	1.39	4	1.39	4	1.39			0%	100%	2.40			
Natchitoches □	0	0.00	0	0.00	0	0.00			N/A	N/A	0.00			
Orleans ■	2	0.06	1	0.03	0	0.00			100%	100%	0.08			
Ouachita ■	0	0.00	0	0.00	0	0.00			N/A	N/A	0.00			
Plaquemines □	0	0.00	0	0.00	0	0.00			N/A	N/A	0.00			
Pointe Coupee □	0	0.00	0	0.00	0	0.00			N/A	N/A	0.00			
Rapides ■	7	0.46	8	0.53	1	0.07			57%	86%	1.03			
Red River □	0	0.00	0	0.00	0	0.00			N/A	N/A	0.00			
Richland □	0	0.00	0	0.00	0	0.00			N/A	N/A	0.00			
Sabine □	0	0.00	0	0.00	0	0.00			N/A	N/A	0.00			
St. Bernard □	0	0.00	0	0.00	0	0.00			N/A	N/A	0.00			
St. Charles □	0	0.00	0	0.00	1	0.16			N/A	N/A	0.00			
St. Helena □	0	0.00	0	0.00	0	0.00			N/A	N/A	0.00			
St. James □	0	0.00	0	0.00	0	0.00			N/A	N/A	0.00			
St. John the Baptist □	0	0.00	0	0.00	0	0.00			N/A	N/A	0.00			
St. Landry ■	0	0.00	0	0.00	0	0.00			N/A	N/A	0.00			
St. Martin □	0	0.00	0	0.00	1	0.17			N/A	N/A	0.00			
St. Mary □	4	0.69	5	0.86	3	0.52			25%	75%	1.41			
St. Tammany ■	0	0.00	0	0.00	0	0.00			N/A	N/A	0.00			
Tangipahoa ■	0	0.00	0	0.00	0	0.00			N/A	N/A	0.00			
Tensas □	0	0.00	0	0.00	0	0.00			N/A	N/A	0.00			
Terrebonne ■	3	0.23	2	0.16	3	0.23			67%	67%	0.66			
Union □	0	0.00	0	0.00	0	0.00			N/A	N/A	0.00			
Vermilion □	0	0.00	0	0.00	0	0.00			N/A	N/A	0.00			
Vernon □	2	0.37	2	0.37	1	0.19			0%	50%	1.02			
Washington □	0	0.00	0	0.00	0	0.00			N/A	N/A	0.00			
Webster □	5	1.17	5	1.17	3	0.70			40%	80%	2.27			
West Baton Rouge □	0	0.00	0	0.00	0	0.00			N/A	N/A	0.00			
West Carroll □	1	0.77	0	0.00	0	0.00			0%	100%	3.98			
West Feliciana □	0	0.00	0	0.00	0	0.00			N/A	N/A	0.00			
Winn □	1	0.67	0	0.00	0	0.00			0%	0%	0.00			

* Per 1,000 age 10-17 parish residents based on yearly population estimates
 ** Per 1,000 age 10-17 African American parish residents based on yearly population estimates
 † Youth without a Parish designation and Out of State youth are included