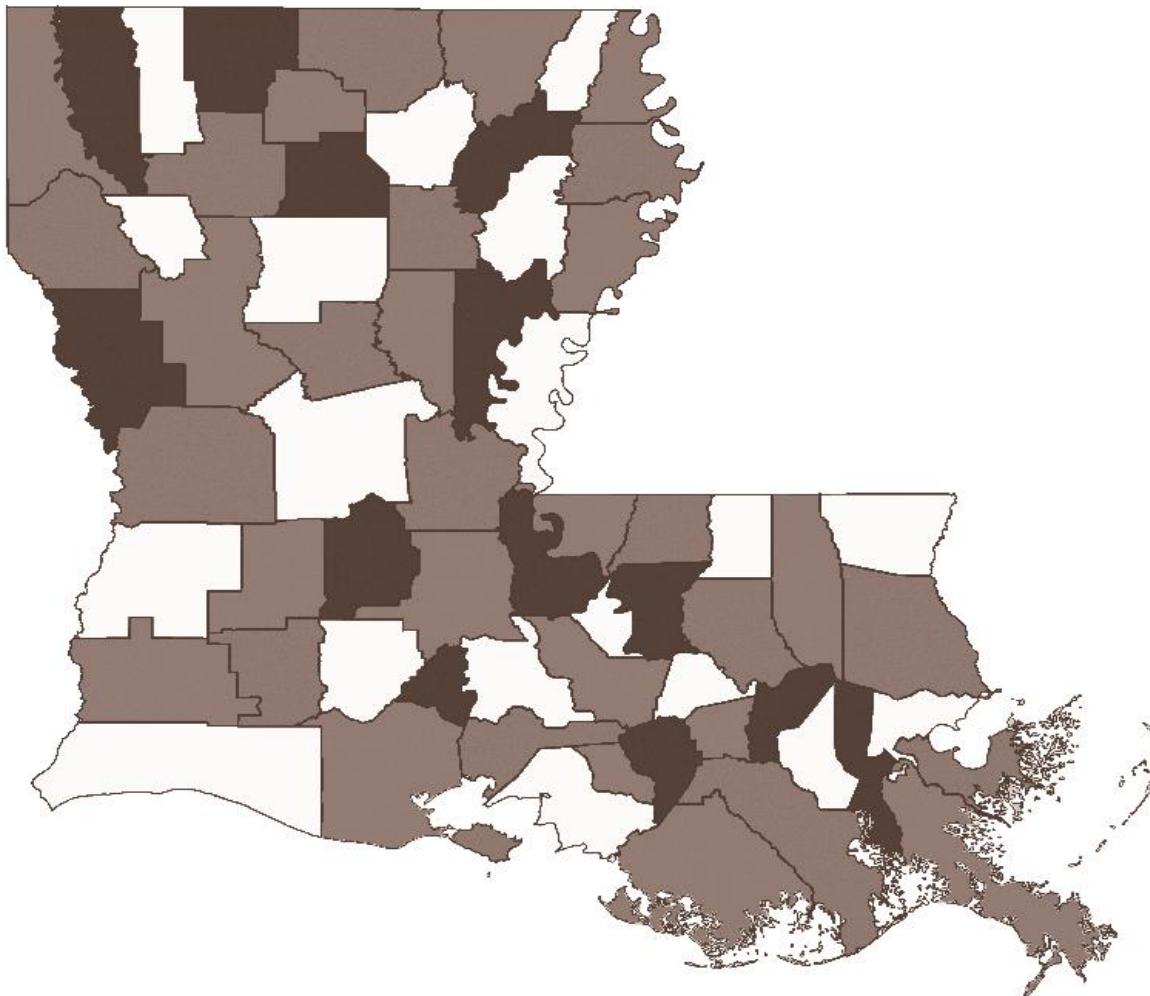


Louisiana Quarterly Juvenile Justice Indicators

An up-to-date view of juvenile custody
and supervision populations



- Acadia
- Allen
- Ascension
- Assumption
- Avoyelles
- Beauregard
- Bienville
- Bossier
- Caddo
- Calcasieu
- Caldwell
- Cameron
- Catahoula
- Claiborne
- Concordia
- De Soto
- East Baton Rouge
- East Carroll
- East Feliciana
- Evangeline
- Franklin
- Grant
- Iberia
- Iberville
- Jackson
- Jefferson
- Jefferson Davis
- Lafayette
- Lafourche
- Lasalle
- Lincoln
- Livingston
- Madison
- Morehouse
- Natchitoches
- Orleans
- Ouachita
- Plaquemines
- Pointe Coupee
- Rapides
- Red River
- Richland
- Sabine
- St. Bernard
- St. Charles
- St. Helena
- St. James
- St. John the Baptist
- St. Landry
- St. Martin
- St. Mary
- St. Tammany
- Tangipahoa
- Tensas
- Terrebonne
- Union
- Vermilion
- Vernon
- Washington
- Webster
- West Baton Rouge
- West Carroll
- West Feliciana
- Winn

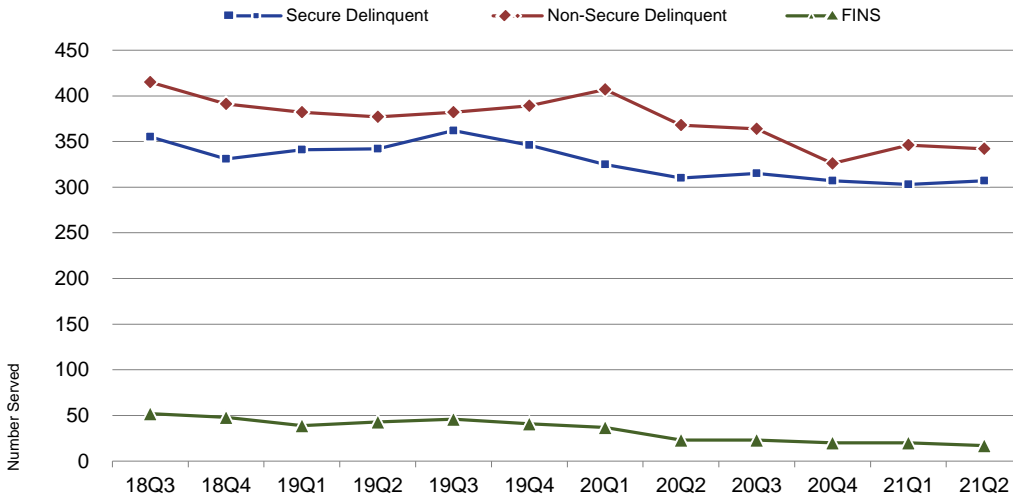
In Louisiana, juvenile sentencing practices can vary widely from parish to parish and are subject to change over time. The following report, issued quarterly, is designed to offer an up-to-date view of juvenile custody and supervision populations, both statewide and for all sixty-four parishes. For further background on data definitions, sources, and interpreting the document, please see the accompanying guide

It is our hope that monitoring these reports will help stakeholders at every level follow trends, inform planning, and identify areas in need of further investigation. The following observations are provided as examples to stimulate stakeholders to examine the data themselves with an eye toward local needs and concerns:

- During the second quarter of 2021 there were 307 youth served in a secure custody legal status, 342 non-secure custody, and 17 FINS custody statewide.
- Statewide, about 0.63 youth per thousand had a secure delinquent status; less than 0.70 per thousand had a non-secure delinquent status.
- African American youth are disproportionately represented in every custody and supervision status.
- Custody rates by parish widely diverge, with larger parishes distributed across the spectrum.

Quarterly Statewide Trends: Youth Served

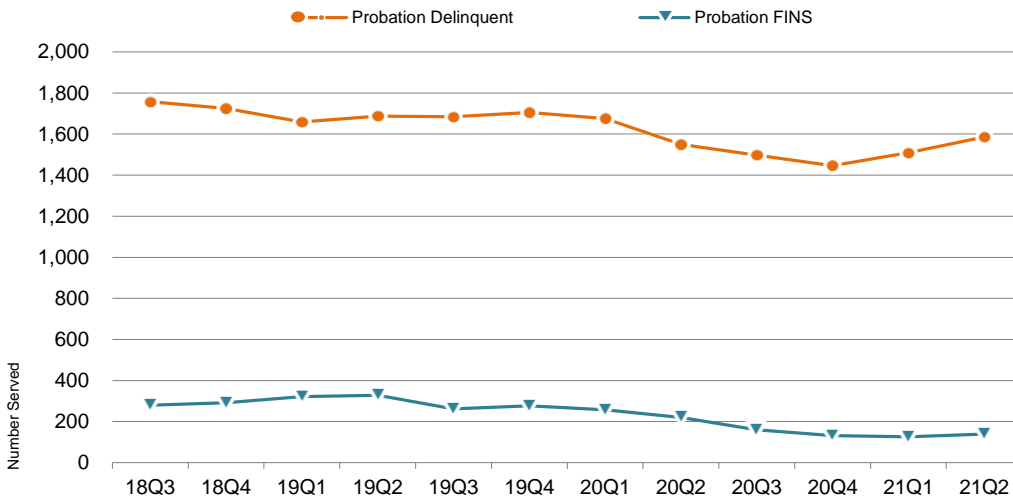
CUSTODY TYPE



Youth Served

	this quarter	% change from	
		last qtr	2 yrs ago
Secure	307	1.3%	-10.2%
Non-Sec.	342	-1.2%	-9.3%
FINS	17	-15.0%	-60.5%

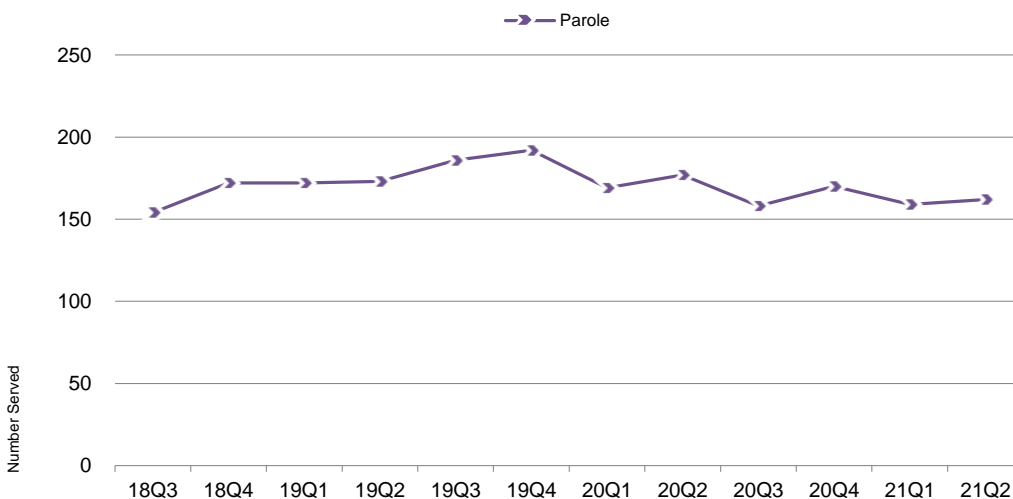
PROBATION (Delinquent and FINS, not including local)



Youth Served

	this quarter	% change from	
		last qtr	2 yrs ago
P. Delinq.	1,585	5.0%	-6.1%
P. FINS	139	10.3%	-57.6%

PAROLE

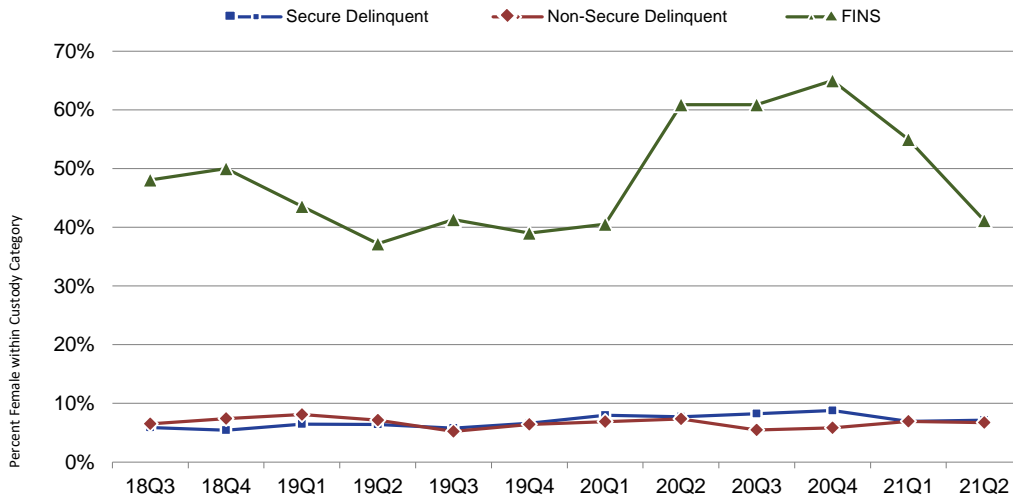


Youth Served

	this quarter	% change from	
		last qtr	2 yrs ago
Parole	162	1.9%	-6.4%

Quarterly Statewide Trends: Youth Served

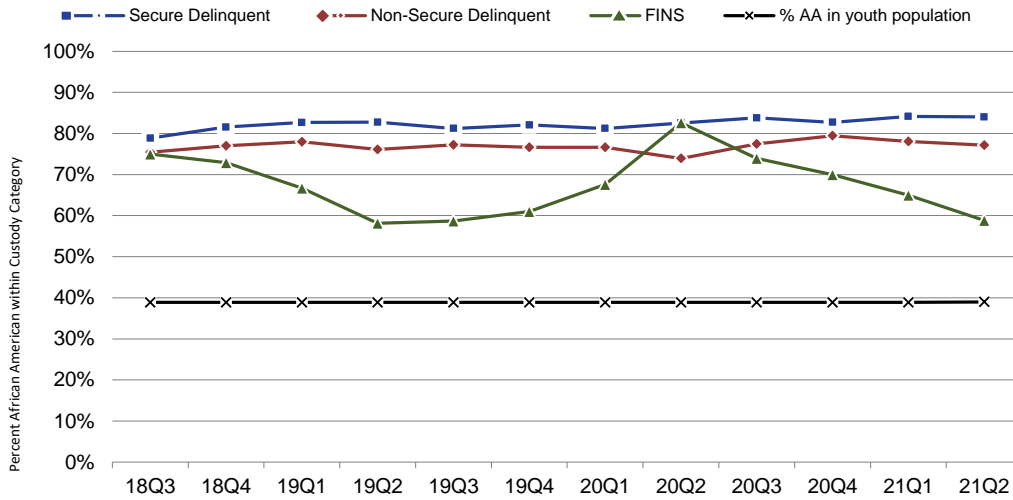
CUSTODY TYPE BY % FEMALE



Youth Served: Female

	this quarter	% change from	
		last qtr	2 yrs ago
Secure	22	4.8%	0.0%
Non-Sec.	23	-4.2%	-14.8%
FINS	7	-36.4%	-56.3%
Youth Served: Male			
Secure	285	1.1%	-10.9%
Non-Sec.	319	-0.9%	-8.9%
FINS	10	11.1%	-63.0%

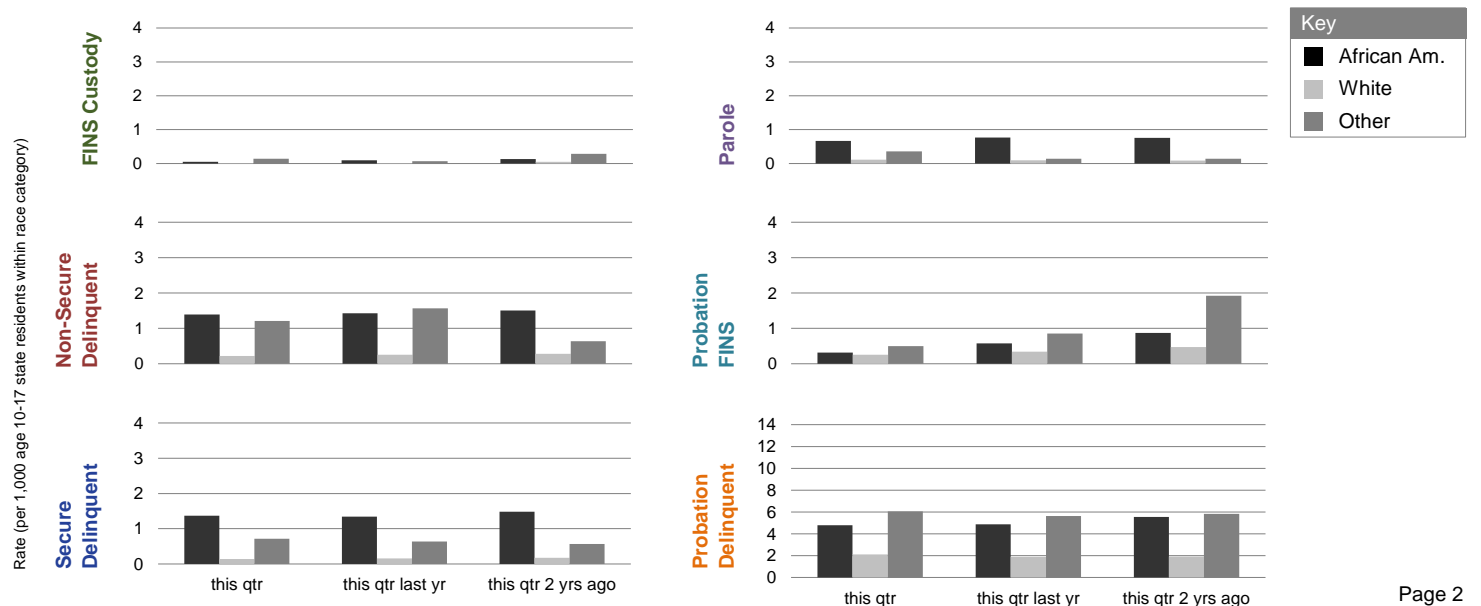
CUSTODY TYPE BY % AFRICAN AMERICAN



Youth Served: African American

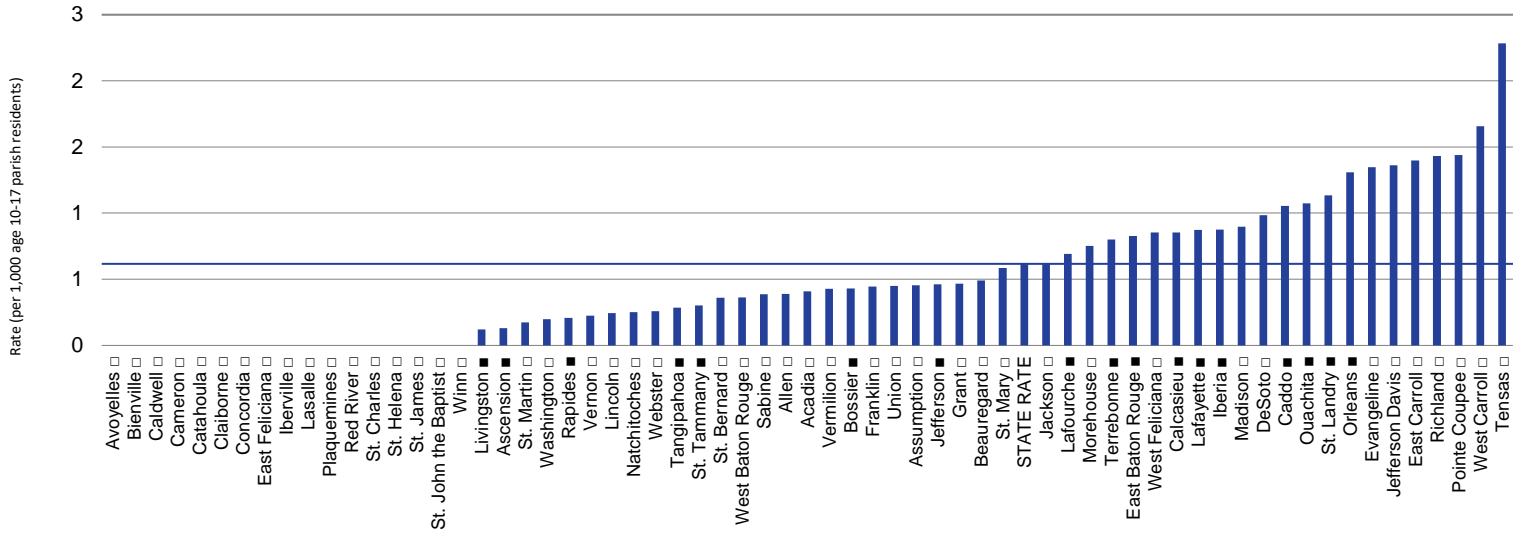
	this quarter	% change from	
		last qtr	2 yrs ago
Secure	258	1.2%	-8.8%
Non-Sec.	264	-2.2%	-8.0%
FINS	10	-23.1%	-60.0%
Youth Served: White			
Secure	39	0.0%	-23.5%
Non-Sec.	61	5.2%	-24.7%
FINS	5	-16.7%	-64.3%
Youth Served: Other			
Secure	10	11.1%	25.0%
Non-Sec.	17	-5.6%	88.9%
FINS	2	100%	400%

CUSTODY TYPE, PROBATION, AND PAROLE RATES BY RACE

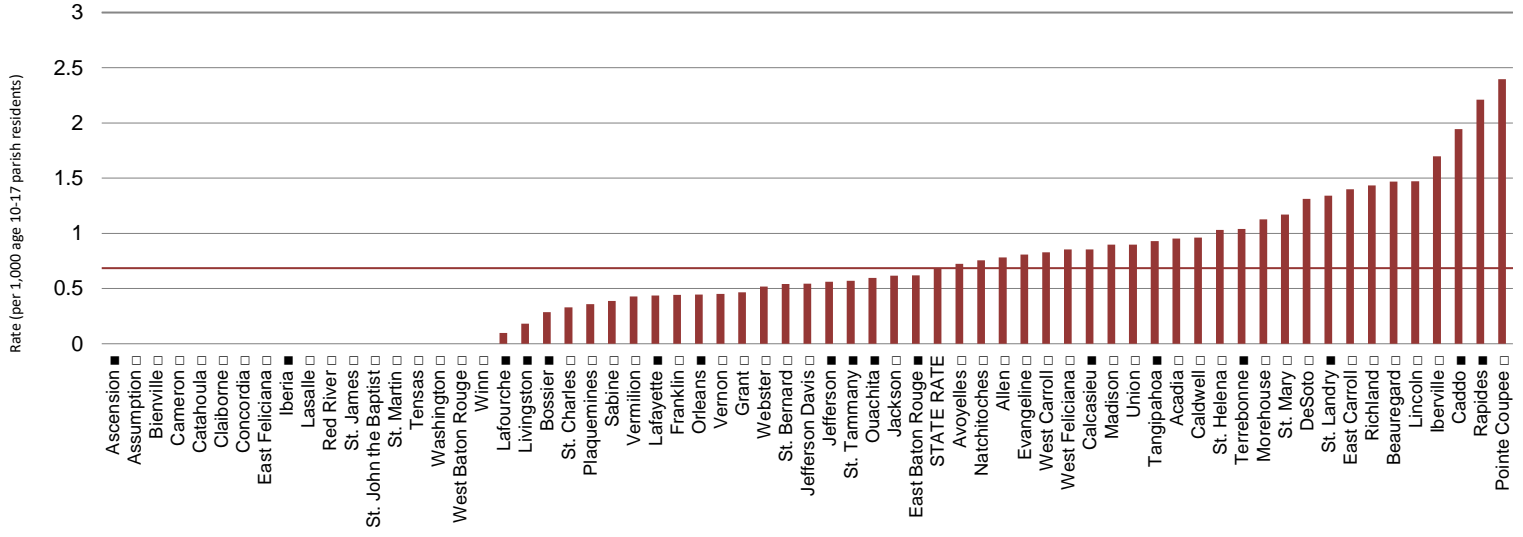


Current Quarter: Parish Comparisons by Custody Type

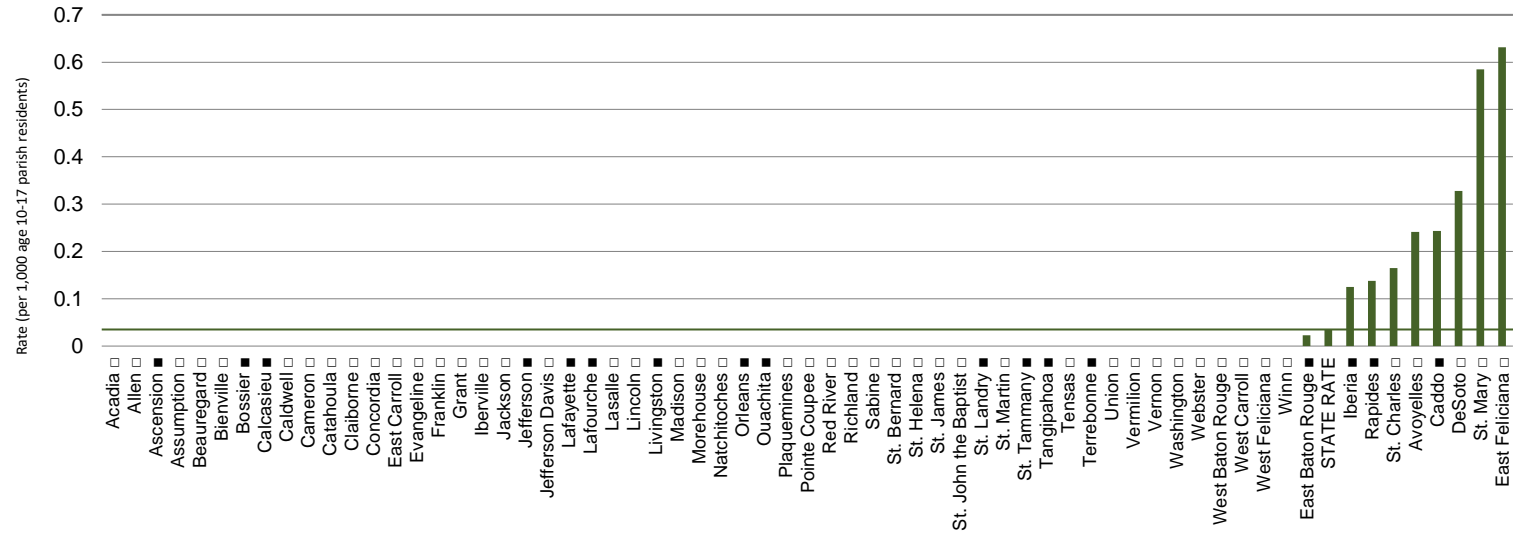
SECURE DELINQUENT CUSTODY



NON-SECURE DELINQUENT CUSTODY



FINS CUSTODY



Secure Delinquent Custody

**2021
2nd Quarter**

	This Quarter		Last Quarter		This Quarter Last Year		This Qtr's variance from state rate -10 +10	12 Qtr Trend Number	Demographics			Variance from ttl parish rate		
	Number	Rate*	Number	Rate*	Number	Rate*			Female		African American		-10	+10
									Percent	Rate**	Percent	Rate**		
State Total† ►	307	0.63	303	0.62	310	0.63	-----		7%	84%	1.36			
Acadia □	3	0.41	4	0.54	3	0.40			0%	100%	1.87			
Allen □	1	0.39	1	0.39	0	0.00			0%	0%	0.00			
Ascension ■	2	0.13	1	0.06	0	0.00			0%	50%	0.24			
Assumption □	1	0.46	0	0.00	1	0.40			0%	100%	1.23			
Avoyelles □	0	0.00	0	0.00	0	0.00			N/A	N/A	0.00			
Beauregard □	2	0.49	3	0.73	2	0.48			0%	0%	0.00			
Bienville □	0	0.00	0	0.00	0	0.00			N/A	N/A	0.00			
Bossier ■	6	0.43	4	0.29	2	0.15			17%	100%	1.53			
Caddo ■	26	1.05	32	1.30	37	1.41			8%	88%	1.57			
Calcasieu ■	19	0.85	17	0.76	12	0.55			11%	84%	2.27			
Caldwell □	0	0.00	0	0.00	0	0.00			N/A	N/A	0.00			
Cameron □	0	0.00	0	0.00	0	0.00			N/A	N/A	0.00			
Catahoula □	0	0.00	0	0.00	0	0.00			N/A	N/A	0.00			
Claiborne □	0	0.00	0	0.00	0	0.00			N/A	N/A	0.00			
Concordia □	0	0.00	0	0.00	0	0.00			N/A	N/A	0.00			
De Soto □	3	0.98	4	1.31	4	1.34			0%	67%	1.72			
East Baton Rouge ■	36	0.83	32	0.74	38	0.85			3%	100%	1.40			
East Carroll □	1	1.40	1	1.40	1	1.28			0%	100%	1.83			
East Feliciana □	0	0.00	0	0.00	0	0.00			N/A	N/A	0.00			
Evangeline □	5	1.35	2	0.54	3	0.76			0%	80%	3.32			
Franklin □	1	0.44	0	0.00	1	0.43			0%	0%	0.00			
Grant □	1	0.47	1	0.47	0	0.00			100%	0%	0.00			
Iberia ■	7	0.88	5	0.63	5	0.56			0%	86%	1.89			
Iberville □	0	0.00	2	0.68	0	0.00			N/A	N/A	0.00			
Jackson □	1	0.62	1	0.62	2	1.25			0%	100%	2.10			
Jefferson ■	19	0.46	17	0.41	16	0.39			5%	95%	1.19			
Jefferson Davis □	5	1.36	6	1.63	5	1.40			0%	40%	2.73			
Lafayette ■	22	0.87	19	0.75	20	0.82			9%	77%	2.00			
Lafourche ■	7	0.69	3	0.30	3	0.29			14%	71%	2.84			
Lasalle □	0	0.00	0	0.00	0	0.00			N/A	N/A	0.00			
Lincoln □	1	0.25	1	0.25	1	0.24			0%	0%	0.00			
Livingston ■	2	0.12	1	0.06	2	0.12			0%	100%	1.37			
Madison □	1	0.90	1	0.90	2	1.65			0%	100%	1.26			
Morehouse □	2	0.75	2	0.75	3	1.05			0%	100%	1.30			
Natchitoches □	1	0.25	1	0.25	0	0.00			0%	100%	0.50			
Orleans ■	44	1.31	62	1.84	68	2.11			16%	98%	1.67			
Ouachita ■	18	1.07	13	0.78	9	0.51			6%	83%	1.95			
Plaquemines □	0	0.00	0	0.00	0	0.00			N/A	N/A	0.00			
Pointe Coupee □	3	1.44	4	1.92	4	1.66			0%	33%	1.08			
Rapides ■	3	0.21	4	0.28	7	0.46			33%	67%	0.36			
Red River □	0	0.00	0	0.00	0	0.00			N/A	N/A	0.00			
Richland □	3	1.43	4	1.91	4	1.73			0%	67%	2.27			
Sabine □	1	0.39	1	0.39	1	0.38			100%	100%	1.68			
St. Bernard □	2	0.36	3	0.54	4	0.83			0%	50%	0.55			
St. Charles □	0	0.00	0	0.00	1	0.16			N/A	N/A	0.00			
St. Helena □	0	0.00	0	0.00	0	0.00			N/A	N/A	0.00			
St. James □	0	0.00	0	0.00	0	0.00			N/A	N/A	0.00			
St. John the Baptist □	0	0.00	0	0.00	0	0.00			N/A	N/A	0.00			
St. Landry ■	11	1.14	7	0.72	9	0.91			9%	91%	2.16			
St. Martin □	1	0.17	1	0.17	0	0.00			0%	100%	0.47			
St. Mary □	3	0.58	1	0.19	1	0.17			0%	33%	0.53			
St. Tammany ■	9	0.30	7	0.23	10	0.34			0%	56%	1.03			
Tangipahoa ■	4	0.29	6	0.43	7	0.52			0%	100%	0.73			
Tensas □	1	2.28	1	2.28	0	0.00			0%	100%	3.45			
Terrebonne ■	10	0.80	9	0.72	4	0.31			0%	80%	2.68			
Union □	1	0.45	1	0.45	1	0.44			0%	100%	1.50			
Vermilion □	3	0.43	2	0.29	1	0.14			0%	100%	2.24			
Vernon □	1	0.23	1	0.23	3	0.56			0%	0%	0.00			
Washington □	1	0.20	1	0.20	1	0.19			0%	100%	0.54			
Webster □	1	0.26	1	0.26	0	0.00			0%	100%	0.71			
West Baton Rouge □	1	0.36	2	0.73	1	0.38			0%	100%	0.76			
West Carroll □	2	1.66	2	1.66	0	0.00			0%	50%	4.50			
West Feliciana □	1	0.85	1	0.85	0	0.00			0%	100%	3.03			
Winn □	0	0.00	0	0.00	0	0.00			N/A	N/A	0.00			

* Per 1,000 age 10-17 parish residents based on yearly population estimates

** Per 1,000 age 10-17 African American parish residents based on yearly population estimates

† Youth without a Parish designation and Out of State youth are included

Non-Secure Delinquent Custody

**2021
2nd Quarter**

	This Quarter		Last Quarter		This Quarter Last Year		This Qtr's variance from state rate -10 +10	12 Qtr Trend Number	Demographics			Variance from ttl parish rate -10 +10	
	Number	Rate*	Number	Rate*	Number	Rate*			Female	African American			
									Percent	Percent	Rate**		
State Total† ►	342	0.71	346	0.70	368	0.75	-----		7%	77%	1.40		
Acadia □	7	0.95	6	0.82	3	0.40			0%	86%	3.73		
Allen □	2	0.78	1	0.39	0	0.00			0%	50%	1.97		
Ascension ■	0	0.00	0	0.00	3	0.20			N/A	N/A	0.00		
Assumption □	0	0.00	0	0.00	1	0.40			N/A	N/A	0.00		
Avoyelles □	3	0.72	6	1.45	2	0.46			33%	33%	0.70		
Beauregard □	6	1.47	4	0.98	2	0.48			0%	67%	7.53		
Bienville □	0	0.00	0	0.00	1	0.68			N/A	N/A	0.00		
Bossier ■	4	0.29	12	0.86	17	1.26			0%	100%	1.02		
Caddo ■	48	1.95	42	1.70	45	1.72			6%	88%	2.86		
Calcasieu ■	19	0.85	23	1.03	32	1.47			0%	79%	2.13		
Caldwell □	1	0.96	0	0.00	2	1.93			0%	0%	0.00		
Cameron □	0	0.00	0	0.00	0	0.00			N/A	N/A	0.00		
Catahoula □	0	0.00	0	0.00	0	0.00			N/A	N/A	0.00		
Claiborne □	0	0.00	0	0.00	0	0.00			N/A	N/A	0.00		
Concordia □	0	0.00	1	0.48	3	1.33			N/A	N/A	0.00		
De Soto □	4	1.31	3	0.98	4	1.34			0%	75%	2.58		
East Baton Rouge ■	27	0.62	29	0.67	24	0.54			7%	100%	1.05		
East Carroll □	1	1.40	1	1.40	0	0.00			0%	100%	1.83		
East Feliciana □	0	0.00	0	0.00	0	0.00			N/A	N/A	0.00		
Evangeline □	3	0.81	5	1.35	6	1.51			0%	100%	2.49		
Franklin □	1	0.44	2	0.89	1	0.43			0%	100%	1.16		
Grant □	1	0.47	1	0.47	0	0.00			0%	0%	0.00		
Iberia ■	0	0.00	2	0.25	5	0.56			N/A	N/A	0.00		
Iberville □	5	1.70	3	1.02	1	0.32			60%	100%	2.97		
Jackson □	1	0.62	1	0.62	0	0.00			0%	100%	2.10		
Jefferson ■	23	0.56	23	0.56	21	0.51			13%	65%	0.99		
Jefferson Davis □	2	0.54	1	0.27	3	0.84			0%	50%	1.36		
Lafayette ■	11	0.44	11	0.44	15	0.62			9%	82%	1.06		
Lafourche ■	1	0.10	4	0.40	3	0.29			0%	100%	0.57		
Lasalle □	0	0.00	0	0.00	0	0.00			N/A	N/A	0.00		
Lincoln □	6	1.47	7	1.72	6	1.44			0%	100%	3.45		
Livingston ■	3	0.18	1	0.06	1	0.06			33%	0%	0.00		
Madison □	1	0.90	2	1.79	1	0.82			0%	100%	1.26		
Morehouse □	3	1.13	4	1.50	2	0.70			0%	100%	1.95		
Natchitoches □	3	0.76	3	0.76	2	0.48			33%	100%	1.50		
Orleans ■	15	0.45	17	0.51	24	0.75			0%	93%	0.54		
Ouachita ■	10	0.60	8	0.48	9	0.51			0%	90%	1.17		
Plaquemines □	1	0.36	2	0.72	3	1.08			0%	100%	1.38		
Pointe Coupee □	5	2.40	4	1.92	6	2.50			0%	60%	3.23		
Rapides ■	32	2.21	28	1.93	29	1.92			6%	66%	3.75		
Red River □	0	0.00	0	0.00	1	1.10			N/A	N/A	0.00		
Richland □	3	1.43	3	1.43	0	0.00			0%	67%	2.27		
Sabine □	1	0.39	3	1.16	5	1.92			0%	100%	1.68		
St. Bernard □	3	0.54	3	0.54	1	0.21			33%	67%	1.10		
St. Charles □	2	0.33	2	0.33	1	0.16			50%	50%	0.57		
St. Helena □	1	1.03	0	0.00	0	0.00			0%	100%	1.64		
St. James □	0	0.00	1	0.46	1	0.43			N/A	N/A	0.00		
St. John the Baptist □	0	0.00	0	0.00	1	0.20			N/A	N/A	0.00		
St. Landry ■	13	1.34	10	1.03	6	0.61			0%	92%	2.59		
St. Martin □	0	0.00	0	0.00	1	0.17			N/A	N/A	0.00		
St. Mary □	6	1.17	8	1.56	4	0.69			0%	50%	1.59		
St. Tammany ■	17	0.57	15	0.50	12	0.41			6%	41%	1.45		
Tangipahoa ■	13	0.93	10	0.71	4	0.30			15%	85%	2.00		
Tensas □	0	0.00	0	0.00	1	1.73			N/A	N/A	0.00		
Terrebonne ■	13	1.04	12	0.96	26	2.03			0%	62%	2.68		
Union □	2	0.90	2	0.90	1	0.44			0%	50%	1.50		
Vermilion □	3	0.43	2	0.29	1	0.14			0%	67%	1.49		
Vernon □	2	0.45	3	0.68	0	0.00			0%	50%	1.25		
Washington □	0	0.00	1	0.20	0	0.00			N/A	N/A	0.00		
Webster □	2	0.52	0	0.00	7	1.64			0%	50%	0.71		
West Baton Rouge □	0	0.00	0	0.00	0	0.00			N/A	N/A	0.00		
West Carroll □	1	0.83	2	1.66	3	2.32			0%	100%	4.50		
West Feliciana □	1	0.85	1	0.85	0	0.00			0%	100%	3.03		
Winn □	0	0.00	0	0.00	1	0.67			N/A	N/A	0.00		

* Per 1,000 age 10-17 parish residents based on yearly population estimates
 ** Per 1,000 age 10-17 African American parish residents based on yearly population estimates
 † Youth without a Parish designation and Out of State youth are included

FINS Custody

**2021
2nd Quarter**

	This Quarter		Last Quarter		This Quarter Last Year		This Qtr's variance from state rate -10 +10	12 Qtr Trend Number	Demographics				
	Number	Rate*	Number	Rate*	Number	Rate*			Female		African American	Variance from ttl parish rate	
									Percent	Percent	Rate**	-10	+10
State Total† ▶	17	0.04	20	0.04	23	0.05	-----		41%	59%	0.05		
Acadia □	0	0.00	0	0.00	0	0.00			N/A	N/A	0.00		
Allen □	0	0.00	0	0.00	0	0.00			N/A	N/A	0.00		
Ascension ■	0	0.00	0	0.00	0	0.00			N/A	N/A	0.00		
Assumption □	0	0.00	0	0.00	0	0.00			N/A	N/A	0.00		
Avoyelles □	1	0.24	1	0.24	0	0.00			0%	0%	0.00		
Beauregard □	0	0.00	0	0.00	0	0.00			N/A	N/A	0.00		
Bienville □	0	0.00	0	0.00	0	0.00			N/A	N/A	0.00		
Bossier ■	0	0.00	2	0.14	0	0.00			N/A	N/A	0.00		
Caddo ■	6	0.24	7	0.28	9	0.34			33%	100%	0.41		
Calcasieu ■	0	0.00	0	0.00	1	0.05			N/A	N/A	0.00		
Caldwell □	0	0.00	0	0.00	0	0.00			N/A	N/A	0.00		
Cameron □	0	0.00	0	0.00	0	0.00			N/A	N/A	0.00		
Catahoula □	0	0.00	0	0.00	0	0.00			N/A	N/A	0.00		
Claiborne □	0	0.00	0	0.00	0	0.00			N/A	N/A	0.00		
Concordia □	0	0.00	0	0.00	0	0.00			N/A	N/A	0.00		
De Soto □	1	0.33	1	0.33	0	0.00			100%	0%	0.00		
East Baton Rouge ■	1	0.02	4	0.09	3	0.07			0%	0%	0.00		
East Carroll □	0	0.00	0	0.00	0	0.00			N/A	N/A	0.00		
East Feliciana □	1	0.63	1	0.63	0	0.00			100%	100%	1.37		
Evangeline □	0	0.00	0	0.00	0	0.00			N/A	N/A	0.00		
Franklin □	0	0.00	0	0.00	0	0.00			N/A	N/A	0.00		
Grant □	0	0.00	0	0.00	0	0.00			N/A	N/A	0.00		
Iberia ■	1	0.13	1	0.13	0	0.00			100%	100%	0.31		
Iberville □	0	0.00	0	0.00	0	0.00			N/A	N/A	0.00		
Jackson □	0	0.00	0	0.00	0	0.00			N/A	N/A	0.00		
Jefferson ■	0	0.00	0	0.00	0	0.00			N/A	N/A	0.00		
Jefferson Davis □	0	0.00	0	0.00	0	0.00			N/A	N/A	0.00		
Lafayette ■	0	0.00	0	0.00	0	0.00			N/A	N/A	0.00		
Lafourche ■	0	0.00	0	0.00	0	0.00			N/A	N/A	0.00		
Lasalle □	0	0.00	0	0.00	0	0.00			N/A	N/A	0.00		
Lincoln □	0	0.00	0	0.00	0	0.00			N/A	N/A	0.00		
Livingston ■	0	0.00	0	0.00	0	0.00			N/A	N/A	0.00		
Madison □	0	0.00	0	0.00	0	0.00			N/A	N/A	0.00		
Morehouse □	0	0.00	0	0.00	1	0.35			N/A	N/A	0.00		
Natchitoches □	0	0.00	0	0.00	0	0.00			N/A	N/A	0.00		
Orleans ■	0	0.00	0	0.00	0	0.00			N/A	N/A	0.00		
Ouachita ■	0	0.00	0	0.00	0	0.00			N/A	N/A	0.00		
Plaquemines □	0	0.00	0	0.00	0	0.00			N/A	N/A	0.00		
Pointe Coupee □	0	0.00	0	0.00	0	0.00			N/A	N/A	0.00		
Rapides ■	2	0.14	2	0.14	6	0.40			50%	50%	0.18		
Red River □	0	0.00	0	0.00	0	0.00			N/A	N/A	0.00		
Richland □	0	0.00	0	0.00	0	0.00			N/A	N/A	0.00		
Sabine □	0	0.00	0	0.00	0	0.00			N/A	N/A	0.00		
St. Bernard □	0	0.00	0	0.00	0	0.00			N/A	N/A	0.00		
St. Charles □	1	0.16	0	0.00	0	0.00			100%	100%	0.57		
St. Helena □	0	0.00	0	0.00	0	0.00			N/A	N/A	0.00		
St. James □	0	0.00	0	0.00	0	0.00			N/A	N/A	0.00		
St. John the Baptist □	0	0.00	0	0.00	0	0.00			N/A	N/A	0.00		
St. Landry ■	0	0.00	0	0.00	0	0.00			N/A	N/A	0.00		
St. Martin □	0	0.00	0	0.00	0	0.00			N/A	N/A	0.00		
St. Mary □	3	0.58	1	0.19	1	0.17			0%	0%	0.00		
St. Tammany ■	0	0.00	0	0.00	0	0.00			N/A	N/A	0.00		
Tangipahoa ■	0	0.00	0	0.00	0	0.00			N/A	N/A	0.00		
Tensas □	0	0.00	0	0.00	0	0.00			N/A	N/A	0.00		
Terrebonne ■	0	0.00	0	0.00	0	0.00			N/A	N/A	0.00		
Union □	0	0.00	0	0.00	0	0.00			N/A	N/A	0.00		
Vermilion □	0	0.00	0	0.00	0	0.00			N/A	N/A	0.00		
Vernon □	0	0.00	0	0.00	0	0.00			N/A	N/A	0.00		
Washington □	0	0.00	0	0.00	0	0.00			N/A	N/A	0.00		
Webster □	0	0.00	0	0.00	1	0.23			N/A	N/A	0.00		
West Baton Rouge □	0	0.00	0	0.00	0	0.00			N/A	N/A	0.00		
West Carroll □	0	0.00	0	0.00	0	0.00			N/A	N/A	0.00		
West Feliciana □	0	0.00	0	0.00	0	0.00			N/A	N/A	0.00		
Winn □	0	0.00	0	0.00	0	0.00			N/A	N/A	0.00		

* Per 1,000 age 10-17 parish residents based on yearly population estimates
 ** Per 1,000 age 10-17 African American parish residents based on yearly population estimates
 † Youth without a Parish designation and Out of State youth are included