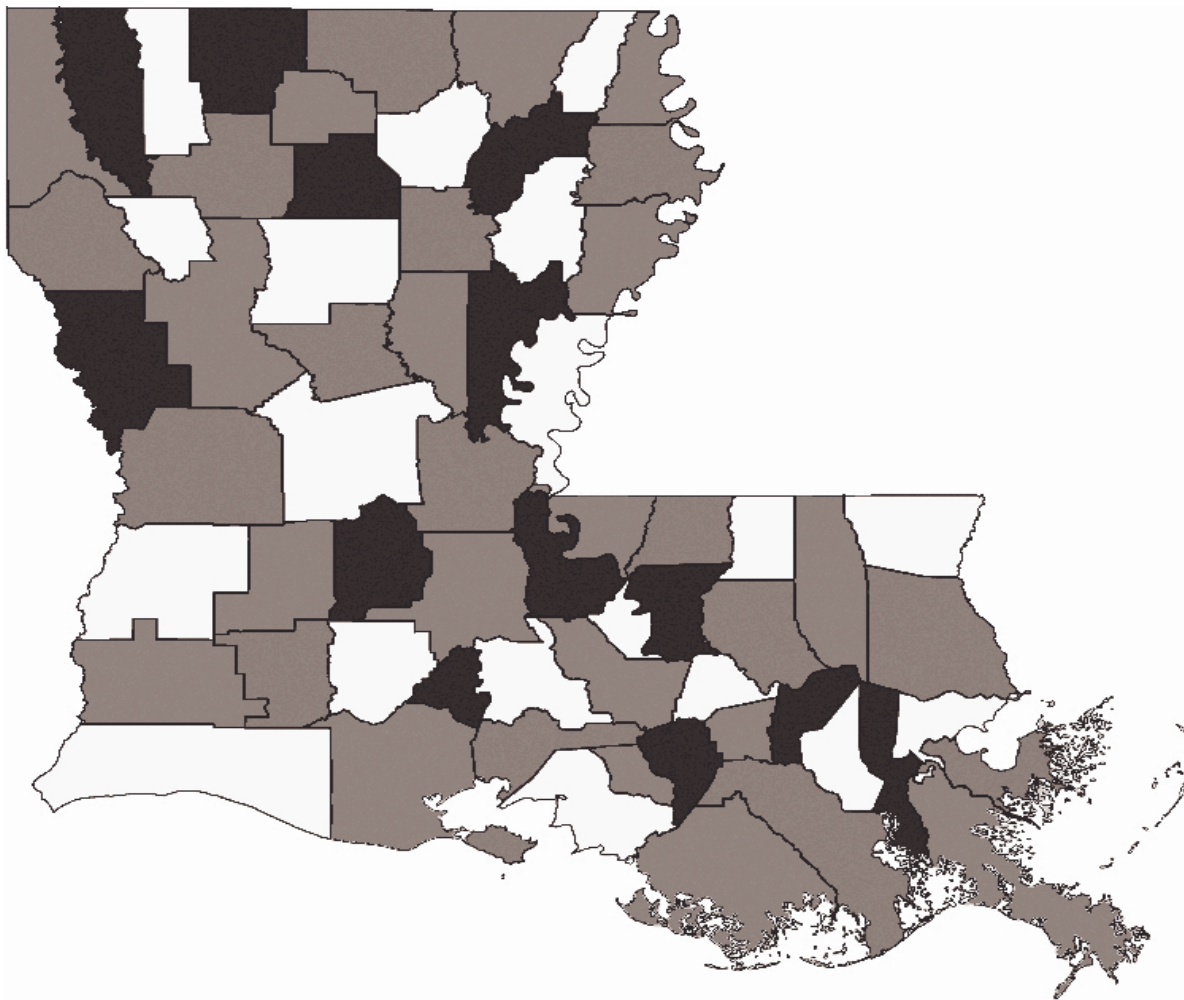


# Louisiana Quarterly Juvenile Justice Indicators

An up-to-date view of juvenile custody  
and supervision populations



- Acadia
- Allen
- Ascension
- Assumption
- Avoyelles
- Beauregard
- Bienville
- Bossier
- Caddo
- Calcasieu
- Caldwell
- Cameron
- Catahoula
- Claiborne
- Concordia
- De Soto
- East Baton Rouge
- East Carroll
- East Feliciana
- Evangeline
- Franklin
- Grant
- Iberia
- Iberville
- Jackson
- Jefferson
- Jefferson Davis
- Lafayette
- Lafourche
- Lasalle
- Lincoln
- Livingston
- Madison
- Morehouse
- Natchitoches
- Orleans
- Ouachita
- Plaquemines
- Pointe Coupee
- Rapides
- Red River
- Richland
- Sabine
- St. Bernard
- St. Charles
- St. Helena
- St. James
- St. John the Baptist
- St. Landry
- St. Martin
- St. Mary
- St. Tammany
- Tangipahoa
- Tensas
- Terrebonne
- Union
- Vermilion
- Vernon
- Washington
- Webster
- West Baton Rouge
- West Carroll
- West Feliciana
- Winn

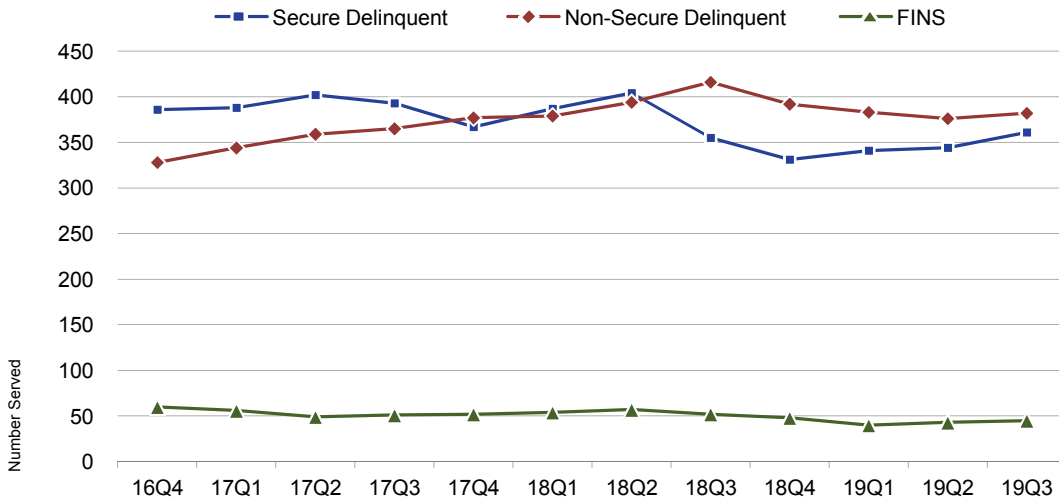
In Louisiana, juvenile sentencing practices can vary widely from parish to parish and are subject to change over time. The following report, issued quarterly, is designed to offer an up-to-date view of juvenile custody and supervision populations, both statewide and for all sixty-four parishes. For further background on data definitions, sources, and interpreting the document, please see the accompanying guide

It is our hope that monitoring these reports will help stakeholders at every level follow trends, inform planning, and identify areas in need of further investigation. The following observations are provided as examples to stimulate stakeholders to examine the data themselves with an eye toward local needs and concerns:

- During the third quarter of 2019 there were 361 youth served in a secure custody legal status, 382 non-secure custody, and 45 FINS custody statewide.
- Statewide, about 0.74 youth per thousand had a secure delinquent status; less than 0.79 per thousand had a non-secure delinquent status.
- African American youth are disproportionately represented in every custody and supervision status.
- Custody rates by parish widely diverge, with larger parishes distributed across the spectrum.

# Quarterly Statewide Trends: Youth Served

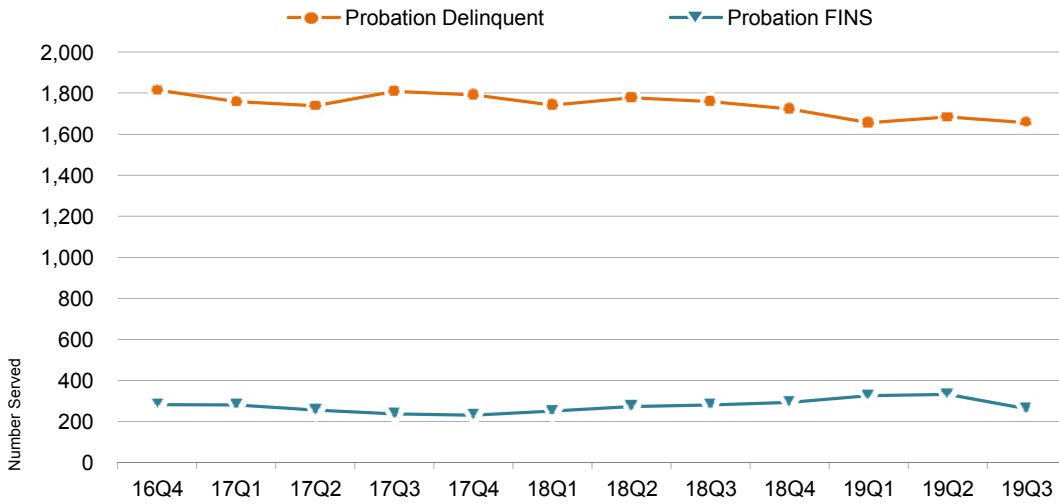
## CUSTODY TYPE



## Youth Served

	this quarter	% change from	
		last qtr	2 yrs ago
Secure	361	4.9%	-8.1%
Non-Sec.	382	1.6%	4.7%
FINS	45	4.7%	-11.8%

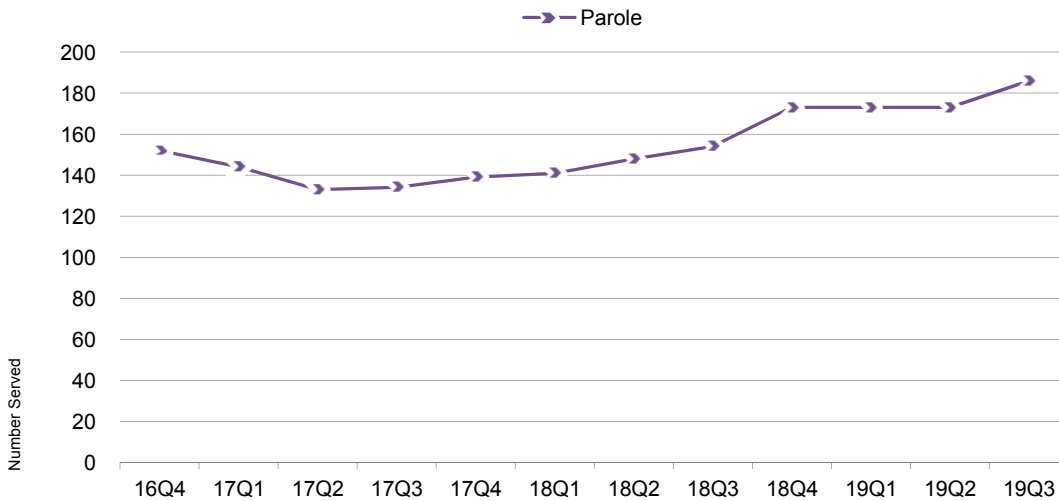
## PROBATION (Delinquent and FINS, not including local)



## Youth Served

	this quarter	% change from	
		last qtr	2 yrs ago
P. Delinq.	1,656	-1.7%	-8.5%
P. FINS	262	-21.1%	10.5%

## PAROLE

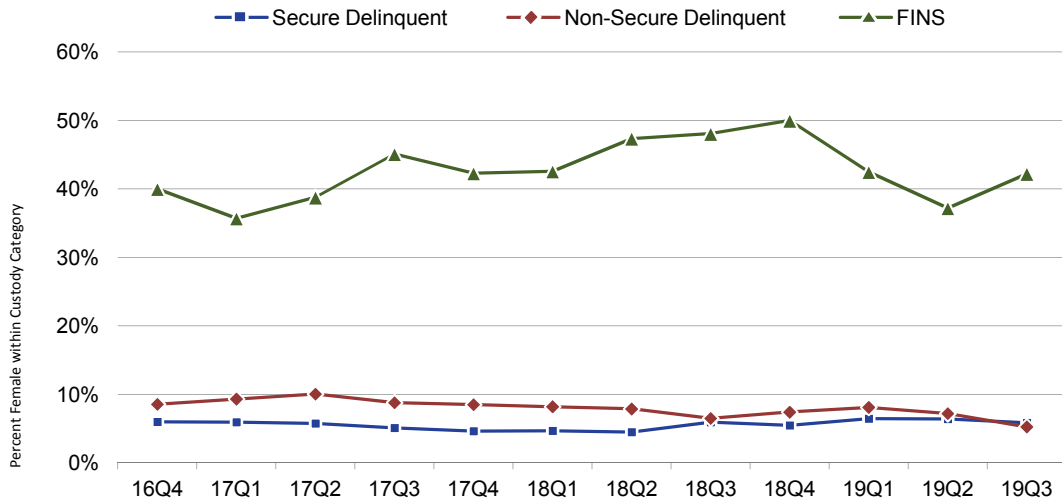


## Youth Served

	this quarter	% change from	
		last qtr	2 yrs ago
Parole	186	7.5%	38.8%

# Quarterly Statewide Trends: Youth Served

## CUSTODY TYPE BY % FEMALE



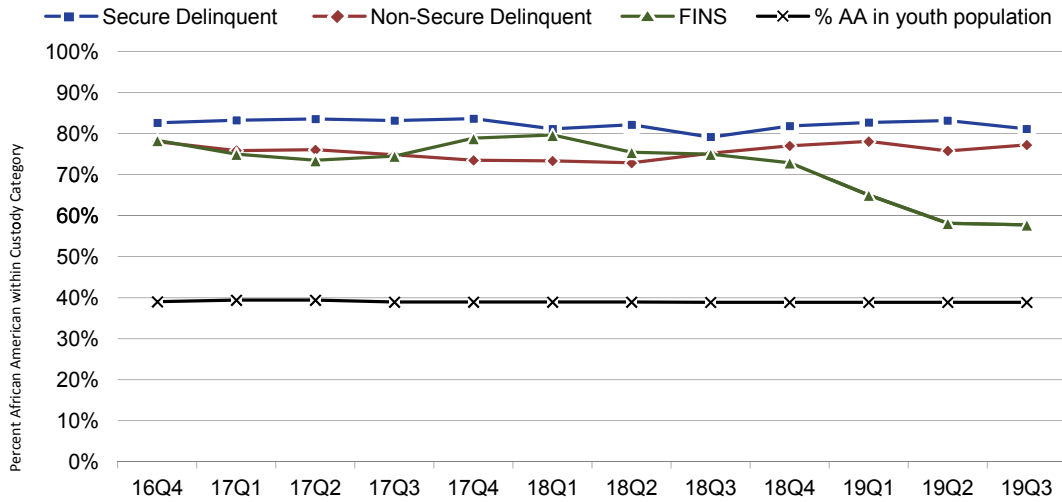
## Youth Served: Female

	this quarter	% change from	
		last qtr	2 yrs ago
Secure	21	-4.5%	5.0%
Non-Sec.	20	-25.9%	-37.5%
FINS	19	18.8%	-17.4%

Youth Served: Male			
	this quarter	% change from	
		last qtr	
		2 yrs ago	
Secure	340	5.6%	-8.8%
Non-Sec.	362	3.7%	8.7%
FINS	26	-3.7%	-7.1%

## CUSTODY TYPE BY % AFRICAN AMERICAN



## Youth Served: African American

	this quarter	% change from	
		last qtr	2 yrs ago
Secure	293	2.4%	-10.4%
Non-Sec.	295	3.5%	8.1%
FINS	26	4.0%	-31.6%

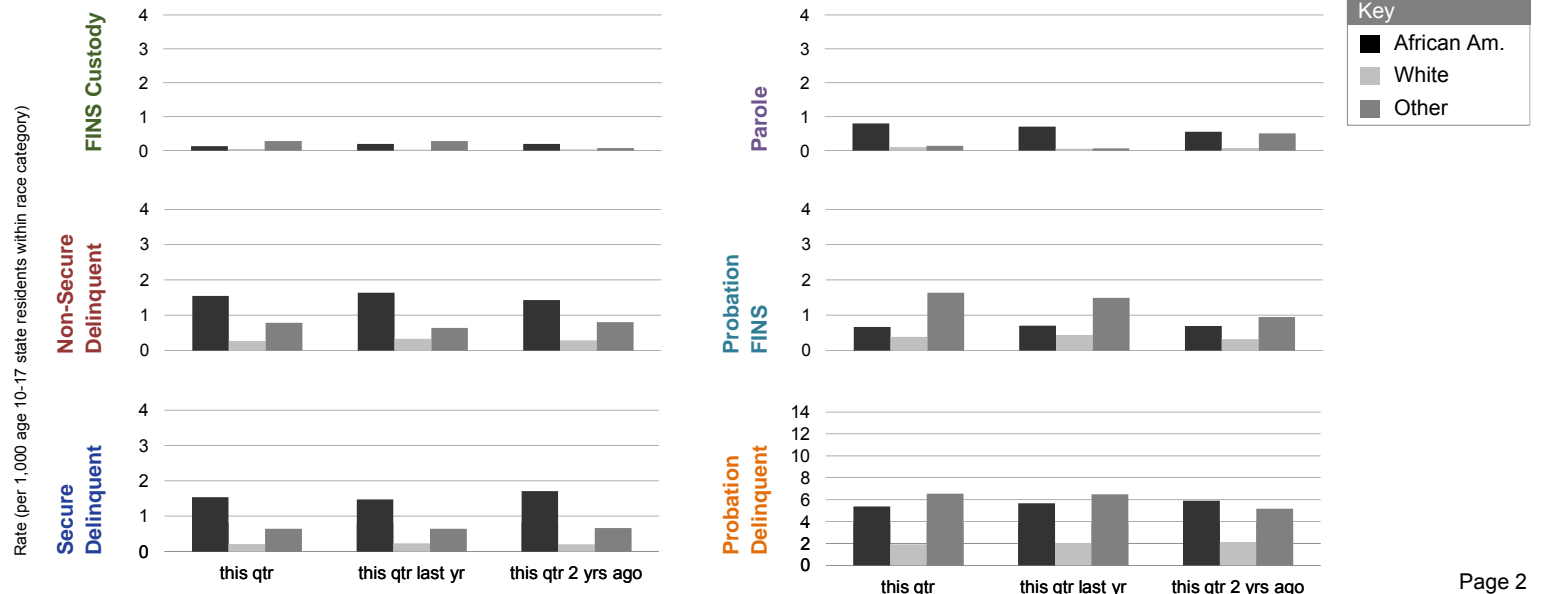
  

Youth Served: White			
	this quarter	% change from	
		last qtr	
		2 yrs ago	
Secure	59	15.7%	3.5%
Non-Sec.	76	-7.3%	-6.2%
FINS	15	7.1%	25.0%

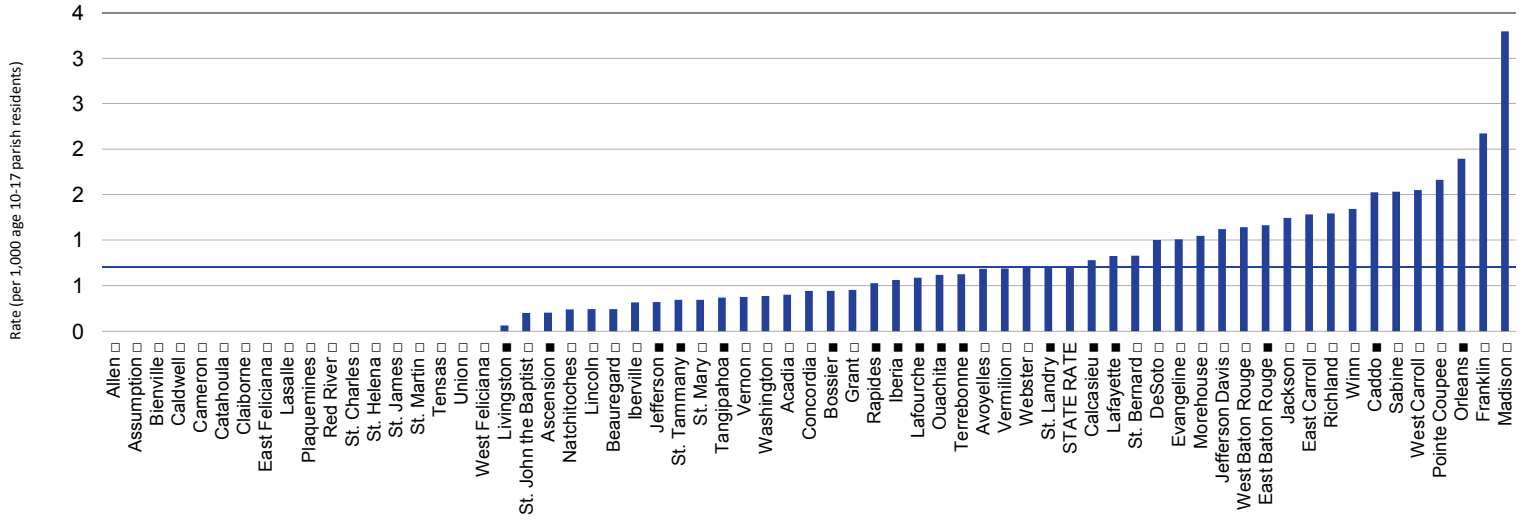
Youth Served: Other			
	this quarter	% change from	
		last qtr	
		2 yrs ago	
Secure	9	28.6%	0.0%
Non-Sec.	11	22.2%	0.0%
FINS	4	0%	300%

## CUSTODY TYPE, PROBATION, AND PAROLE RATES BY RACE

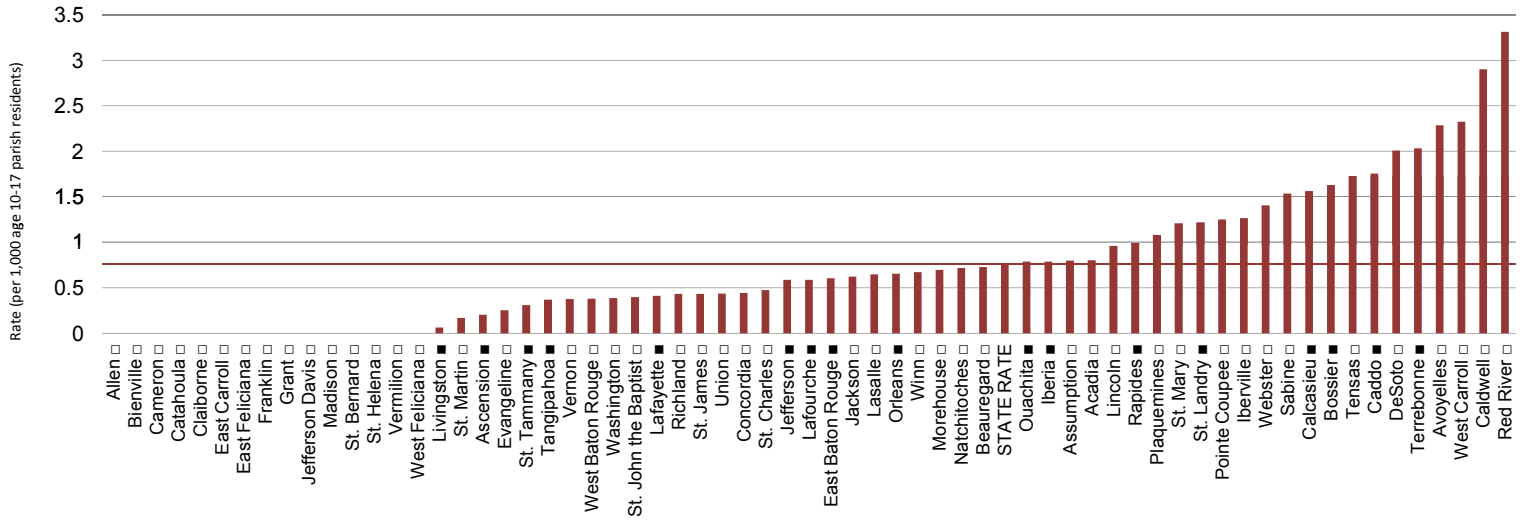


# Current Quarter: Parish Comparisons by Custody Type

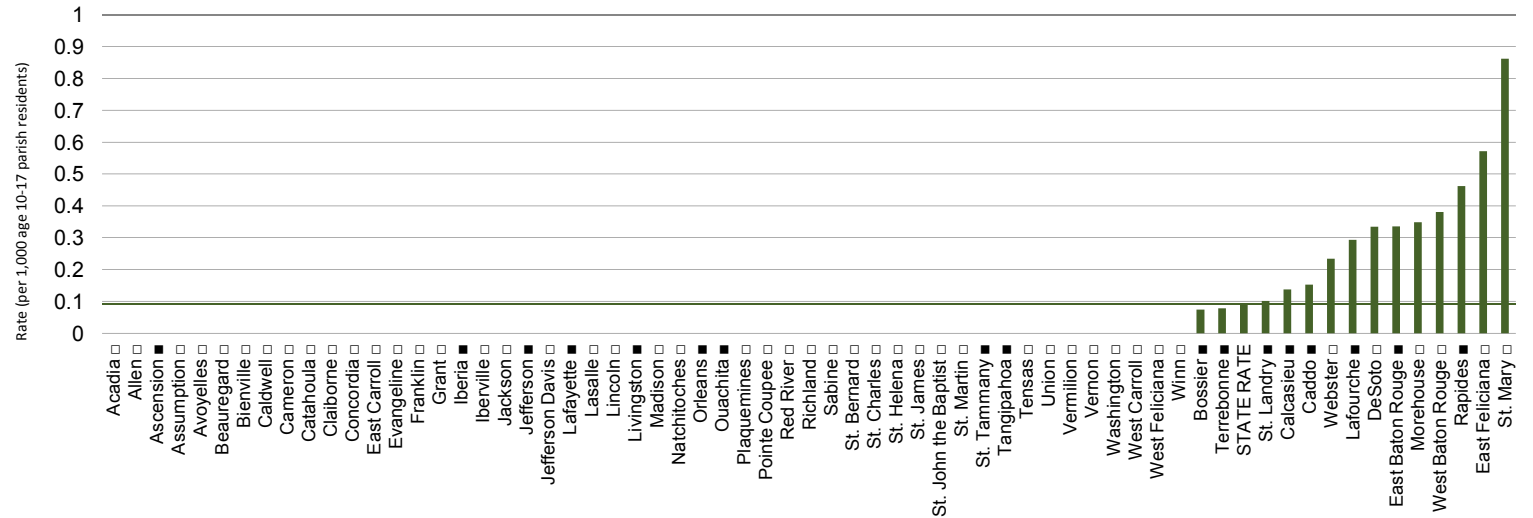
## SECURE DELINQUENT CUSTODY



## NON-SECURE DELINQUENT CUSTODY



## FINS CUSTODY



## Secure Delinquent Custody

**2019**  
**3rd Quarter**

	This Quarter		Last Quarter		This Quarter Last Year		This Qtr's variance from state rate		12 Qtr Trend	Demographics			
	Number	Rate*	Number	Rate*	Number	Rate*	Female			African American		Variance from tll parish rate	
							Percent	Percent	Rate**	-10	+10		
State Total† ▶	361	0.74	344	0.70	355	0.72	-----		6%	81%	1.53		
Acadia □	3	0.40	1	0.13	1	0.13			0%	67%	1.21		
Allen □	0	0.00	0	0.00	3	1.17			N/A	N/A	0.00		
Ascension ■	3	0.20	1	0.07	1	0.07			0%	67%	0.51		
Assumption □	0	0.00	0	0.00	0	0.00			N/A	N/A	0.00		
Avoyelles □	3	0.69	4	0.91	1	0.23			0%	100%	2.03		
Beauregard □	1	0.24	2	0.48	1	0.24			0%	0%	0.00		
Bienville □	0	0.00	0	0.00	0	0.00			N/A	N/A	0.00		
Bossier ■	6	0.44	5	0.37	8	0.59			0%	50%	0.80		
Caddo ■	40	1.53	39	1.49	29	1.11			3%	95%	2.52		
Calcasieu ■	17	0.78	18	0.83	19	0.87			12%	88%	2.22		
Caldwell □	0	0.00	0	0.00	0	0.00			N/A	N/A	0.00		
Cameron □	0	0.00	0	0.00	0	0.00			N/A	N/A	0.00		
Catahoula □	0	0.00	0	0.00	0	0.00			N/A	N/A	0.00		
Claiborne □	0	0.00	0	0.00	2	1.51			N/A	N/A	0.00		
Concordia □	1	0.44	1	0.44	1	0.44			0%	100%	0.95		
De Soto □	3	1.00	3	1.00	2	0.67			0%	100%	2.42		
East Baton Rouge ■	52	1.16	60	1.34	70	1.57			8%	98%	1.93		
East Carroll □	1	1.28	1	1.28	0	0.00			0%	100%	1.73		
East Feliciana □	0	0.00	0	0.00	0	0.00			N/A	N/A	0.00		
Evangeline □	4	1.01	5	1.26	2	0.50			0%	75%	2.29		
Franklin □	5	2.17	5	2.17	8	3.48			20%	60%	3.29		
Grant □	1	0.45	1	0.45	0	0.00			0%	0%	0.00		
Iberia ■	5	0.56	3	0.34	2	0.23			0%	100%	1.45		
Iberville □	1	0.32	1	0.32	1	0.32			0%	100%	0.55		
Jackson □	2	1.25	2	1.25	2	1.25			0%	50%	2.06		
Jefferson ■	13	0.32	13	0.32	17	0.42			8%	92%	0.81		
Jefferson Davis □	4	1.12	3	0.84	4	1.12			0%	25%	1.34		
Lafayette ■	20	0.82	14	0.58	8	0.33			5%	70%	1.71		
Lafourche ■	6	0.59	6	0.59	7	0.68			0%	83%	2.76		
Lasalle □	0	0.00	0	0.00	1	0.65			N/A	N/A	0.00		
Lincoln □	1	0.24	2	0.48	2	0.48			0%	0%	0.00		
Livingston ■	1	0.06	2	0.12	4	0.25			0%	0%	0.00		
Madison □	4	3.29	3	2.47	3	2.47			0%	100%	4.53		
Morehouse □	3	1.05	3	1.05	4	1.39			33%	100%	1.80		
Natchitoches □	1	0.24	1	0.24	0	0.00			0%	100%	0.47		
Orleans ■	61	1.89	54	1.68	52	1.61			7%	95%	2.36		
Ouachita ■	11	0.62	13	0.73	15	0.84			9%	55%	0.74		
Plaquemines □	0	0.00	0	0.00	1	0.36			N/A	N/A	0.00		
Pointe Coupee □	4	1.66	4	1.66	3	1.25			0%	25%	1.00		
Rapides ■	8	0.53	11	0.73	9	0.59			13%	63%	0.86		
Red River □	0	0.00	0	0.00	0	0.00			N/A	N/A	0.00		
Richland □	3	1.29	3	1.29	6	2.59			0%	100%	3.06		
Sabine □	4	1.53	1	0.38	1	0.38			0%	25%	1.72		
St. Bernard □	4	0.83	4	0.83	2	0.41			25%	75%	1.99		
St. Charles □	0	0.00	0	0.00	0	0.00			N/A	N/A	0.00		
St. Helena □	0	0.00	0	0.00	0	0.00			N/A	N/A	0.00		
St. James □	0	0.00	0	0.00	0	0.00			N/A	N/A	0.00		
St. John the Baptist □	1	0.20	2	0.40	1	0.20			0%	0%	0.00		
St. Landry ■	7	0.71	6	0.61	4	0.40			14%	71%	1.06		
St. Martin □	0	0.00	0	0.00	1	0.17			N/A	N/A	0.00		
St. Mary □	2	0.34	2	0.34	1	0.17			0%	50%	0.47		
St. Tammany ■	10	0.34	8	0.28	9	0.31			0%	40%	0.88		
Tangipahoa ■	5	0.37	4	0.30	3	0.22			0%	100%	0.94		
Tensas □	0	0.00	0	0.00	0	0.00			N/A	N/A	0.00		
Terrebonne ■	8	0.63	6	0.47	9	0.70			13%	75%	1.97		
Union □	0	0.00	0	0.00	0	0.00			N/A	N/A	0.00		
Vermilion □	5	0.69	2	0.28	1	0.14			0%	60%	2.16		
Vernon □	2	0.37	3	0.56	5	0.94			0%	0%	0.00		
Washington □	2	0.39	1	0.19	3	0.58			0%	100%	1.05		
Webster □	3	0.70	3	0.70	3	0.70			33%	100%	1.70		
West Baton Rouge □	3	1.14	3	1.14	4	1.52			0%	100%	2.57		
West Carroll □	2	1.55	1	0.77	2	1.55			0%	50%	3.98		
West Feliciana □	0	0.00	0	0.00	0	0.00			N/A	N/A	0.00		
Winn □	2	1.34	2	1.34	2	1.34			0%	100%	3.96		

\* Per 1,000 age 10-17 parish residents based on yearly population estimates

\*\* Per 1,000 age 10-17 African American parish residents based on yearly population estimates

† Youth without a Parish designation and Out of State youth are included

## Non-Secure Delinquent Custody

**2019**  
**3rd Quarter**

	This Quarter		Last Quarter		This Quarter Last Year		This Qtr's variance from state rate		12 Qtr Trend	Demographics				
	Number	Rate*	Number	Rate*	Number	Rate*	Female			African American		Variance from tll parish rate		
							Percent	Percent	Rate**	-10	+10			
State Total† ▶	382	0.78	376	0.77	416	0.85	-----			5%	77%	1.54		
Acadia □	6	0.80	6	0.80	5	0.67				0%	100%	3.63		
Allen □	0	0.00	0	0.00	0	0.00				N/A	N/A	0.00		
Ascension ■	3	0.20	5	0.34	2	0.14				0%	33%	0.26		
Assumption □	2	0.80	3	1.20	1	0.40				0%	100%	2.13		
Avoyelles □	10	2.29	8	1.83	4	0.91				0%	60%	4.07		
Beauregard □	3	0.73	3	0.73	4	0.97				0%	67%	3.20		
Bienville □	0	0.00	0	0.00	0	0.00				N/A	N/A	0.00		
Bossier ■	22	1.63	17	1.26	16	1.18				9%	64%	3.71		
Caddo ■	46	1.75	45	1.72	48	1.83				9%	83%	2.52		
Calcasieu ■	34	1.56	22	1.01	23	1.06				3%	85%	4.30		
Caldwell □	3	2.90	2	1.93	2	1.93				0%	100%	16.13		▶
Cameron □	0	0.00	0	0.00	0	0.00				N/A	N/A	0.00		
Catahoula □	0	0.00	0	0.00	0	0.00				N/A	N/A	0.00		
Claiborne □	0	0.00	0	0.00	0	0.00				N/A	N/A	0.00		
Concordia □	1	0.44	1	0.44	2	0.89				0%	100%	0.95		
De Soto □	6	2.01	3	1.00	2	0.67				0%	67%	3.23		
East Baton Rouge ■	27	0.60	33	0.74	64	1.43				4%	100%	1.02		
East Carroll □	0	0.00	1	1.28	0	0.00				N/A	N/A	0.00		
East Feliciana □	0	0.00	1	0.57	1	0.57				N/A	N/A	0.00		
Evangeline □	1	0.25	4	1.01	8	2.02				0%	100%	0.76		
Franklin □	0	0.00	0	0.00	1	0.43				N/A	N/A	0.00		
Grant □	0	0.00	0	0.00	4	1.81				N/A	N/A	0.00		
Iberia ■	7	0.79	5	0.56	4	0.45				0%	100%	2.03		
Iberville □	4	1.26	5	1.58	1	0.32				0%	100%	2.20		
Jackson □	1	0.62	1	0.62	0	0.00				0%	100%	2.06		
Jefferson ■	24	0.59	27	0.66	28	0.68				8%	79%	1.28		
Jefferson Davis □	0	0.00	1	0.28	0	0.00				N/A	N/A	0.00		
Lafayette ■	10	0.41	17	0.70	11	0.45				10%	90%	1.10		
Lafourche ■	6	0.59	9	0.88	10	0.98				17%	50%	1.66		
Lasalle □	1	0.65	1	0.65	0	0.00				0%	0%	0.00		
Lincoln □	4	0.96	4	0.96	6	1.44				0%	100%	2.14		
Livingston ■	1	0.06	3	0.18	6	0.37				0%	0%	0.00		
Madison □	0	0.00	1	0.82	0	0.00				N/A	N/A	0.00		
Morehouse □	2	0.70	1	0.35	3	1.05				0%	0%	0.00		
Natchitoches □	3	0.72	0	0.00	0	0.00				0%	33%	0.47		
Orleans ■	21	0.65	20	0.62	19	0.59				5%	90%	0.77		
Ouachita ■	14	0.79	12	0.67	13	0.73				7%	79%	1.35		
Plaquemines □	3	1.08	3	1.08	0	0.00				0%	0%	0.00		
Pointe Coupee □	3	1.25	2	0.83	4	1.66				0%	33%	1.00		
Rapides ■	15	0.99	10	0.66	8	0.53				7%	80%	2.06		
Red River □	3	3.31	3	3.31	1	1.10				0%	100%	6.65		
Richland □	1	0.43	2	0.86	0	0.00				0%	100%	1.02		
Sabine □	4	1.53	4	1.53	4	1.53				0%	100%	6.90		
St. Bernard □	0	0.00	2	0.41	7	1.45				N/A	N/A	0.00		
St. Charles □	3	0.48	4	0.63	3	0.48				33%	33%	0.54		
St. Helena □	0	0.00	0	0.00	0	0.00				N/A	N/A	0.00		
St. James □	1	0.43	0	0.00	1	0.43				0%	100%	0.79		
St. John the Baptist □	2	0.40	1	0.20	3	0.60				0%	100%	0.62		
St. Landry ■	12	1.21	14	1.42	8	0.81				0%	83%	2.11		
St. Martin □	1	0.17	1	0.17	0	0.00				0%	100%	0.46		
St. Mary □	7	1.21	8	1.38	6	1.03				0%	43%	1.41		
St. Tammany ■	9	0.31	10	0.34	13	0.45				0%	78%	1.54		
Tangipahoa ■	5	0.37	7	0.52	13	0.96				40%	60%	0.56		
Tensas □	1	1.73	1	1.73	0	0.00				0%	0%	0.00		
Terrebonne ■	26	2.03	21	1.64	27	2.11				4%	69%	5.92		
Union □	1	0.44	0	0.00	0	0.00				0%	100%	1.31		
Vermilion □	0	0.00	1	0.14	4	0.55				N/A	N/A	0.00		
Vernon □	2	0.37	1	0.19	2	0.37				0%	50%	1.02		
Washington □	2	0.39	2	0.39	4	0.77				0%	100%	1.05		
Webster □	6	1.40	5	1.17	7	1.64				17%	50%	1.70		
West Baton Rouge □	1	0.38	1	0.38	0	0.00				0%	100%	0.86		
West Carroll □	3	2.32	2	1.55	1	0.77				0%	67%	7.97		
West Feliciana □	0	0.00	0	0.00	0	0.00				N/A	N/A	0.00		
Winn □	1	0.67	1	0.67	2	1.34				0%	100%	1.98		

\* Per 1,000 age 10-17 parish residents based on yearly population estimates

\*\* Per 1,000 age 10-17 African American parish residents based on yearly population estimates

† Youth without a Parish designation and Out of State youth are included

**FINS Custody**

**2019  
3rd Quarter**

	This Quarter		Last Quarter		This Quarter Last Year		This Qtr's variance from state rate	12 Qtr Trend	Demographics			Variance from ttl parish rate		
	Number	Rate*	Number	Rate*	Number	Rate*			-10		+10	Female	African American	
												Percent	Percent	Rate**
State Total† ▶	45	0.09	43	0.09	52	0.11	-----		42%	58%	0.14			
Acadia □	0	0.00	0	0.00	1	0.13			N/A	N/A	0.00			
Allen □	0	0.00	0	0.00	0	0.00			N/A	N/A	0.00			
Ascension ■	0	0.00	0	0.00	0	0.00			N/A	N/A	0.00			
Assumption □	0	0.00	0	0.00	0	0.00			N/A	N/A	0.00			
Avoyelles □	0	0.00	0	0.00	2	0.46			N/A	N/A	0.00			
Beauregard □	0	0.00	0	0.00	0	0.00			N/A	N/A	0.00			
Bienville □	0	0.00	0	0.00	0	0.00			N/A	N/A	0.00			
Bossier ■	1	0.07	2	0.15	2	0.15			0%	0%	0.00			
Caddo ■	4	0.15	7	0.27	3	0.11			75%	50%	0.13			
Calcasieu ■	3	0.14	3	0.14	1	0.05			67%	33%	0.15			
Caldwell □	0	0.00	0	0.00	0	0.00			N/A	N/A	0.00			
Cameron □	0	0.00	0	0.00	0	0.00			N/A	N/A	0.00			
Catahoula □	0	0.00	0	0.00	0	0.00			N/A	N/A	0.00			
Claiborne □	0	0.00	0	0.00	0	0.00			N/A	N/A	0.00			
Concordia □	0	0.00	0	0.00	0	0.00			N/A	N/A	0.00			
De Soto □	1	0.33	0	0.00	0	0.00			100%	0%	0.00			
East Baton Rouge ■	15	0.34	10	0.22	12	0.27			40%	100%	0.57			
East Carroll □	0	0.00	0	0.00	0	0.00			N/A	N/A	0.00			
East Feliciana □	1	0.57	0	0.00	0	0.00			0%	0%	0.00			
Evangeline □	0	0.00	0	0.00	0	0.00			N/A	N/A	0.00			
Franklin □	0	0.00	0	0.00	0	0.00			N/A	N/A	0.00			
Grant □	0	0.00	0	0.00	0	0.00			N/A	N/A	0.00			
Iberia ■	0	0.00	0	0.00	0	0.00			N/A	N/A	0.00			
Iberville □	0	0.00	0	0.00	1	0.32			N/A	N/A	0.00			
Jackson □	0	0.00	0	0.00	0	0.00			N/A	N/A	0.00			
Jefferson ■	0	0.00	0	0.00	3	0.07			N/A	N/A	0.00			
Jefferson Davis □	0	0.00	0	0.00	0	0.00			N/A	N/A	0.00			
Lafayette ■	0	0.00	0	0.00	0	0.00			N/A	N/A	0.00			
Lafourche ■	3	0.29	3	0.29	1	0.10			67%	0%	0.00			
Lasalle □	0	0.00	0	0.00	0	0.00			N/A	N/A	0.00			
Lincoln □	0	0.00	0	0.00	0	0.00			N/A	N/A	0.00			
Livingston ■	0	0.00	0	0.00	0	0.00			N/A	N/A	0.00			
Madison □	0	0.00	0	0.00	0	0.00			N/A	N/A	0.00			
Morehouse □	1	0.35	2	0.70	3	1.05			0%	100%	0.60			
Natchitoches □	0	0.00	0	0.00	0	0.00			N/A	N/A	0.00			
Orleans ■	0	0.00	1	0.03	3	0.09			N/A	N/A	0.00			
Ouachita ■	0	0.00	0	0.00	0	0.00			N/A	N/A	0.00			
Plaquemines □	0	0.00	0	0.00	0	0.00			N/A	N/A	0.00			
Pointe Coupee □	0	0.00	0	0.00	0	0.00			N/A	N/A	0.00			
Rapides ■	7	0.46	7	0.46	7	0.46			43%	57%	0.69			
Red River □	0	0.00	0	0.00	0	0.00			N/A	N/A	0.00			
Richland □	0	0.00	0	0.00	0	0.00			N/A	N/A	0.00			
Sabine □	0	0.00	0	0.00	0	0.00			N/A	N/A	0.00			
St. Bernard □	0	0.00	0	0.00	0	0.00			N/A	N/A	0.00			
St. Charles □	0	0.00	1	0.16	0	0.00			N/A	N/A	0.00			
St. Helena □	0	0.00	0	0.00	0	0.00			N/A	N/A	0.00			
St. James □	0	0.00	0	0.00	0	0.00			N/A	N/A	0.00			
St. John the Baptist □	0	0.00	0	0.00	0	0.00			N/A	N/A	0.00			
St. Landry ■	1	0.10	1	0.10	0	0.00			0%	0%	0.00			
St. Martin □	0	0.00	0	0.00	0	0.00			N/A	N/A	0.00			
St. Mary □	5	0.86	3	0.52	5	0.86			20%	20%	0.47			
St. Tammany ■	0	0.00	0	0.00	0	0.00			N/A	N/A	0.00			
Tangipahoa ■	0	0.00	0	0.00	0	0.00			N/A	N/A	0.00			
Tensas □	0	0.00	0	0.00	0	0.00			N/A	N/A	0.00			
Terrebonne ■	1	0.08	2	0.16	2	0.16			0%	100%	0.33			
Union □	0	0.00	0	0.00	0	0.00			N/A	N/A	0.00			
Vermilion □	0	0.00	0	0.00	0	0.00			N/A	N/A	0.00			
Vernon □	0	0.00	0	0.00	1	0.19			N/A	N/A	0.00			
Washington □	0	0.00	0	0.00	0	0.00			N/A	N/A	0.00			
Webster □	1	0.23	0	0.00	2	0.47			0%	0%	0.00			
West Baton Rouge □	1	0.38	0	0.00	0	0.00			100%	100%	0.86			
West Carroll □	0	0.00	1	0.77	1	0.77			N/A	N/A	0.00			
West Feliciana □	0	0.00	0	0.00	0	0.00			N/A	N/A	0.00			
Winn □	0	0.00	0	0.00	1	0.67			N/A	N/A	0.00			

\* Per 1,000 age 10-17 parish residents based on yearly population estimates  
 \*\* Per 1,000 age 10-17 African American parish residents based on yearly population estimates  
 † Youth without a Parish designation and Out of State youth are included